



Pushing Performance
Since 1945

SEK-19 SV HT MA LP ANG29 26P PL3 VC/RE/B

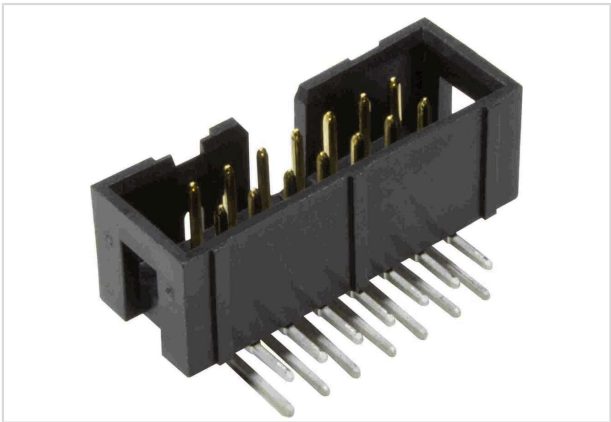


Image is for illustration purposes only. Please refer to product description.

| | |
|--------------------|---|
| Part number | 09 19 526 7323 741 |
| Specification | SEK-19 SV HT MA LP ANG29 26P PL3 VC/RE/B |
| HARTING eCatalogue | https://harting.com/09195267323741 |

Identification

| | |
|----------------------------|-----------------|
| Category | Connectors |
| Series | SEK Low-profile |
| Element | Male connector |
| Description of the contact | Angled |

Version

| | |
|--------------------|---|
| Termination method | Reflow soldering termination (THR) |
| Connection type | PCB to cable Motherboard to daughtercard |
| Number of contacts | 26 |
| Termination length | 2.9 mm |
| Pack contents | Tape & reel |

Technical characteristics

| | |
|------------------------------------|---|
| Contact rows | 2 |
| Contact spacing (termination side) | 2.54 mm |
| Rated current | 1 A |
| Insulation resistance | $>10^9 \Omega$ |
| Contact resistance | $\leq 20 \text{ m}\Omega$ |
| Limiting temperature | -55 ... +125 °C (during reflow soldering max. +240 °C for 60 s) |
| Insertion force | $\leq 78 \text{ N}$ |
| Withdrawal force | $\leq 78 \text{ N}$ |
| Performance level | 3 acc. to IEC 60603-13 |



Pushing Performance
Since 1945

Technical characteristics

| | |
|---------------------------|-----------------------------|
| Mating cycles | ≥50 |
| Test voltage $U_{r.m.s.}$ | 1 kV |
| Isolation group | II ($400 \leq CTI < 600$) |

Material properties

| | |
|---|--|
| Material (insert) | Thermoplastic resin (PCT) |
| Colour (insert) | Black |
| Material (contacts) | Copper alloy |
| Surface (contacts) | Noble metal over Ni Mating side Sn over Ni Termination side |
| Material flammability class acc. to UL 94 | V-0 |
| RoHS | compliant |
| ELV status | compliant |
| China RoHS | e |
| REACH Annex XVII substances | Not contained |
| REACH ANNEX XIV substances | Not contained |
| REACH SVHC substances | Not contained |
| California Proposition 65 substances | Yes |
| California Proposition 65 substances | Lead Nickel |
| Fire protection on railway vehicles | EN 45545-2 (2020-08) |
| Requirement set with Hazard Levels | R26 |

Specifications and approvals

| | |
|----------------|--|
| Specifications | IEC 60603-13 |
| UL / CSA | UL 1977 ECBT2.E102079 CSA-C22.2 No. 182.3 ECBT8.E102079 |

Commercial data

| | |
|--------------------------------|--|
| Packaging size | 280 |
| Net weight | 5.65 g |
| Country of origin | Romania |
| European customs tariff number | 85366990 |
| GTIN | 5713140212183 |
| eCl@ss | 27460201 PCB connector (board connector) |

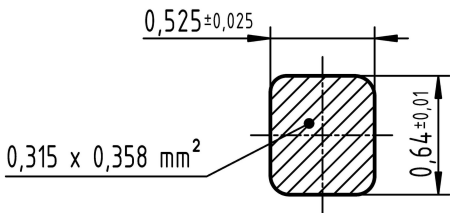


Pushing Performance
Since 1945

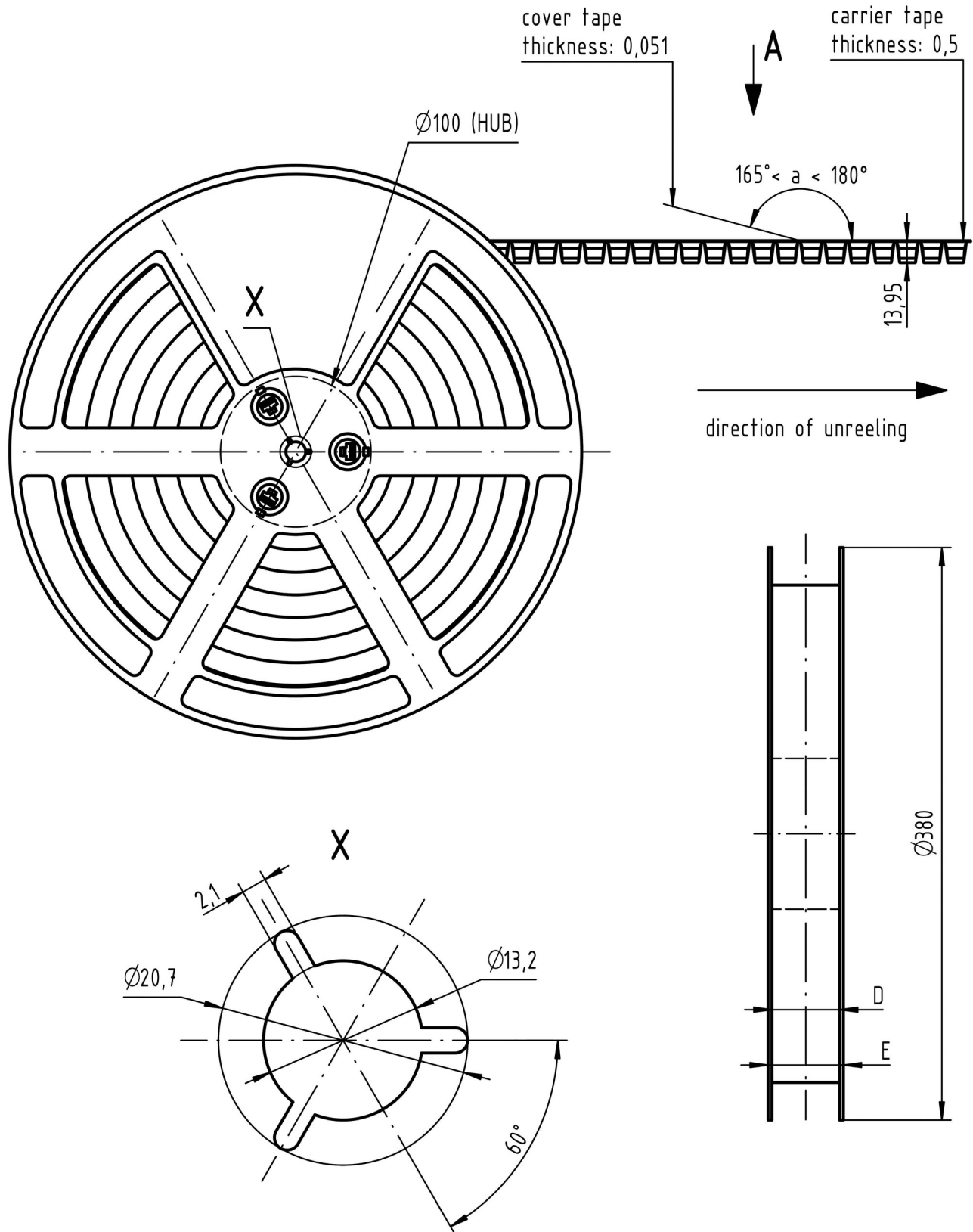
Commercial data

| | |
|-------------|----------|
| ETIM | EC002637 |
| UNSPSC 24.0 | 39121415 |

Cross section of solder termination



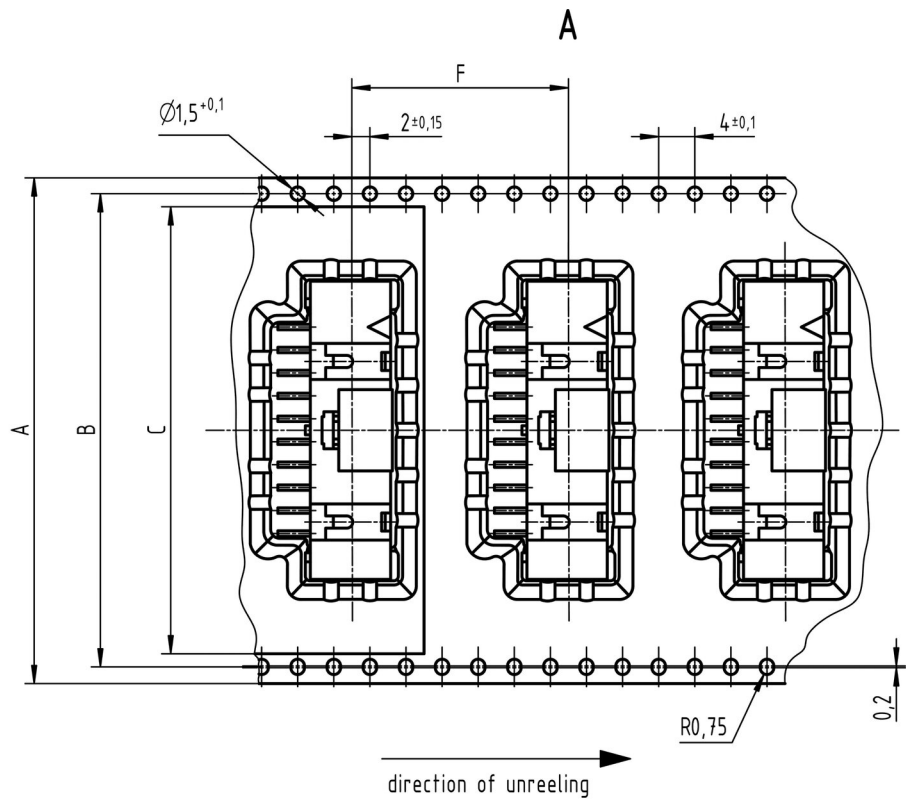
Reel dimensions





Pushing Performance
Since 1945

Tape layout & packaging



| contacts | A | B | C | D | E | F | -trailer- number of empty cavities | number of connector per reel | -leader- number of empty cavities |
|----------|----|------|------|----|----|----|--|------------------------------------|---|
| 40 | 72 | 68,4 | 65,5 | 73 | 78 | 24 | 14 | 280 | 16 |
| 34 | 72 | 68,4 | 65,5 | 73 | 78 | 24 | 14 | 280 | 16 |
| 30 | 56 | 52,4 | 49,5 | 57 | 62 | 24 | 14 | 280 | 16 |
| 26 | 56 | 52,4 | 49,5 | 57 | 62 | 24 | 14 | 280 | 16 |
| 20 | 56 | 52,4 | 49,5 | 57 | 62 | 24 | 14 | 280 | 16 |
| 16 | 44 | 40,4 | 37,5 | 45 | 50 | 24 | 14 | 280 | 16 |
| 14 | 44 | 40,4 | 37,5 | 45 | 50 | 24 | 14 | 280 | 16 |
| 10 | 44 | 40,4 | 37,5 | 45 | 50 | 24 | 14 | 280 | 16 |
| 6 | 32 | 28,4 | 25,5 | 33 | 38 | 24 | 14 | 280 | 16 |