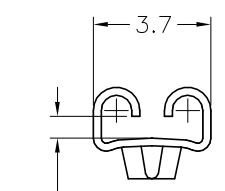
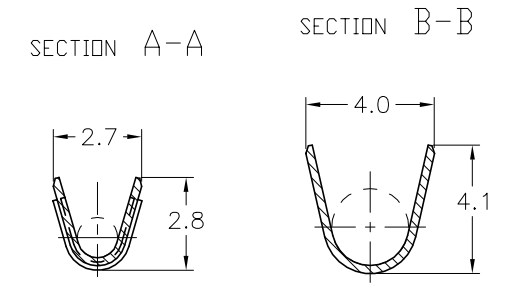
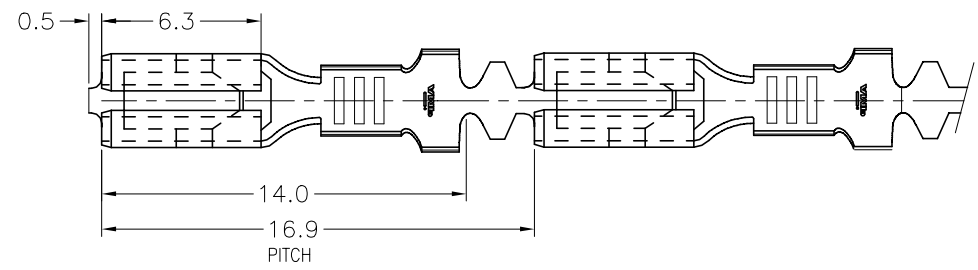
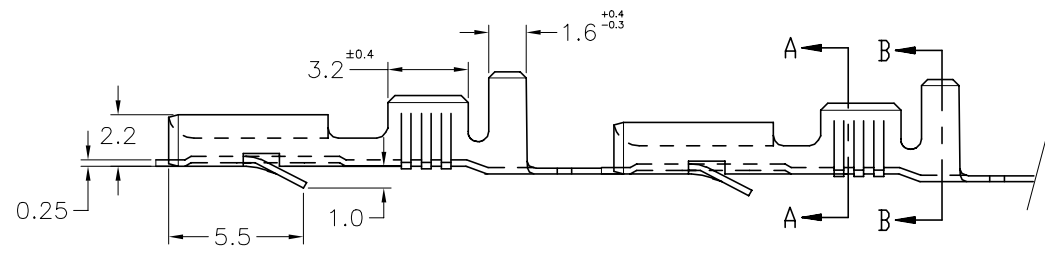


THIS DRAWING IS UNPUBLISHED.
 VERTRAULICHE UNVERÖFFENTLICHTE ZEICHNUNG
 RELEASED FOR PUBLICATION
 FREI FÜR VERÖFFENTLICHUNG
 OCT. 1999.
 ALL RIGHTS RESERVED.
 ALLE RECHTE VORBEHALTEN

LOC	DIST	REVISIONS ÄNDERUNGEN		
IR	-	P	LTR	DESCRIPTION BESCHREIBUNG
		AH		REVISED PER ECR-21-100525
			DATE	DWN
			04MAR2021	PC
				APVD
				DH

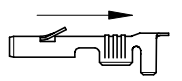


"x"
TO FIT 0.8 TAB THK.



0.68±0.08	0.74±0.08	PRE-TINNED	BRASS	1-160655-1	AF
		TIN PLATED	BRASS	160655-6	AF
		SILVER OVER NICKEL PLATED	BRASS	160655-5	AF
		PRE-TINNED	PH.BRONZE	160655-4	AF
		UNPLATED	PH.BRONZE	160655-3	AF
		PRE-TINNED	BRASS	160655-2	AF
		UNPLATED	BRASS	160655-1	AF
"x"		FINISH/COLOR	MATERIAL	PART NUMBER	REV

SUPPLY CONDITION



DIRECTION OF TOP OF REEL

THIS DRAWING IS A CONTROLLED DOCUMENT.
 DIESE ZEICHNUNG IST EIN KONTROLLIERTES DOKUMENT.

DIMENSIONS: MASSENEHLEN INCHES	TOLERANCES UNLESS OTHERWISE SPECIFIED: ALLGEMEINTOLERANZEN	DWN H.YAALI 12 OCT 99		
	0 PLC ± 0.3 1 PLC ± 0.3 2 PLC ± 0.3 3 PLC ± 0.3 4 PLC ± - ANGLES/WINKEL ± 2'	CHK C.TARTARI 12 OCT 99		
MATERIAL	FINISH/OBERFLAECHE/FARBE	APVD -	NAME	
SEE TABLE	SEE TABLE	PRODUCT SPEC PRODUKTSPEZ. -	FASTON-FASTON CONNECTOR .110 SRS REC. CONTACT	
WIRE RANGE	0.5-1.5 mm ²	APPLICATION SPEC VERARBEITUNGSSPEZ. -	SIZE	RESTRICTED TO NUR FÜR
INSUL. RANGE	2.0-3.0	WEIGHT GEWICHT -	CAGE CODE	
		CUSTOMER DRAWING/KUNDENZEICHNUNG	DRAWING NO. ZEICHNUNGS-NR.	OF
			A3 00779	1
			C=160655	1
			SCALE MASSTAB 5	REV
			SHEET BLATT	AH