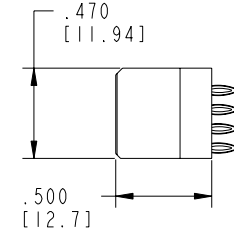
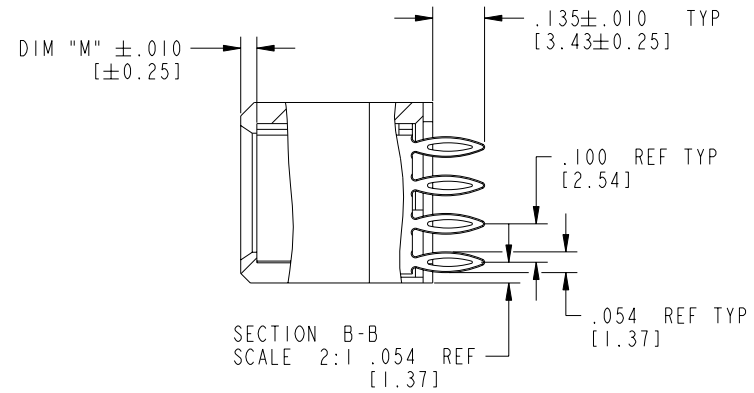
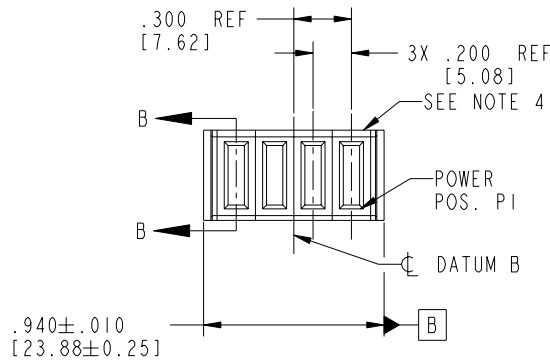


Tous droits strictement reserves. Reproduction ou communication a des tiers interdite sous quelque forme que ce soit sans autorisation écrite du propriétaire. Propriété de c FCI. Droits de reproduction FCI.

FCI

All rights strictly reserved. Reproduction or issue to third parties in any form whatever is not permitted without written authority from the proprietor. Property of FCI. Copyright FCI.

PRODUCT NO.	POWER			
	P4	P3	P2	P1
51940-150-- NOTE: ③	PC	PC	PC	PC



CODE	DIM "M" MATING LENGTH	CONTACT TYPE
PC	.042 [1.07]	POWER

mat'l code				tolerances unless otherwise specified		CUSTOMER		 www.fciconnect.com	
ltr	ecn no.	dr	date			COPY			
A	DG05-0158	GUOJM	6/13/05	linear	$.XX \pm .01 / 0.X \pm 0.3$	projection		title	4P
				angles	$.XXX \pm .005 / 0.XX \pm 0.13$			VERTICAL PF RECEPT	
					$.XXXX \pm .0020 / 0.XXX \pm 0.051$			product family	PwrBlade
				dr	JM Guo	06/13/05		size	213
				enr	SLUO	06/13/05		dwg no	51940-150
				chr	VICTOR LIN	06/13/05		sheet	1 of 3
				appd	JOSEPH HSIA	06/13/05			
sheet index	revision sheet	A	A	A	A				
		1	2	3	4				

Pro/E

cage code 22526

Tous droits strictement reserves. Reproduction ou communication a des tiers interdite sous quelque forme que ce soit sans autorisation écrite du propriétaire. Propriete de c FCI. Droits de reproduction FCI.

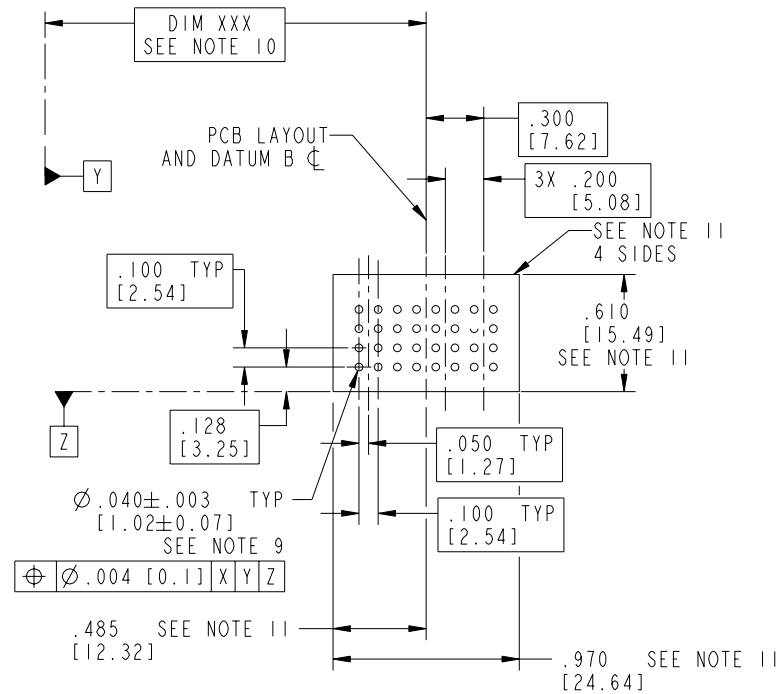
A
FCI

All rights strictly reserved. Reproduction or issue to third parties in any form whatever is not permitted without written authority from the proprietor. Property of FCI. Copyright FCI.

A

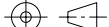
B

PRODUCT NUMBER
51940-150--
NOTE:③



A

B

mat'l code				SEE NOTE 2		tolerances unless otherwise specified		CUSTOMER		<div><div>A</div><div>FCI</div><div>www.fciconnect.com</div></div>			
ltr	ecn no.	dr	date	linear	.XX±.01/0.X±0.3		COPY		<div>projection</div> <div></div> <div>INCH/MM</div> <div>scale 1:1</div>	<div>title</div> <div>4P</div> <div>VERTICAL PF RECEPT</div>			
A					.XXX±.005/0.XX±0.13								
					.XXXX±.0020/0.XXX±0.051								
				angles	0°±2°								
				dr	JM Guo	06/13/05			product family		PwrBlade	code	
				enrg	SLUO	06/13/05			size		dwg no	213	
				chr	VICTOR LIN	06/13/05			A		51940-150		
				appd	JOSEPH HSIA	06/13/05							
sheet index		revision sheet											

Pro/E

3

cage code
22526

4

PDM: Rev:A

STATUS:Released

Printed: Oct 08, 2006

PRODUCT NUMBER
51940-150__
NOTE:③

NOTES:

1. DIMENSIONS AND TOLERANCES ARE IN ACCORDANCE WITH ASME Y14.5M, 1994 UNLESS OTHERWISE SPECIFIED.

CONNECTOR NOTES:

② HOUSING MATERIAL: UL 94 V-0 GLASS FILLED
HIGH-TEMP THERMOPLASTIC
POWER CONTACT MATERIAL: COPPER ALLOY
SIGNAL PIN MATERIAL: COPPER ALLOY

3. PLATING:
51940-150 Power Pin:30u"/0.76um Au OVER 50u"/1.27um Ni ON THE CONTACT AREA,
AND 100u"/2.54um SnPb PLATING OVER 50u"/1.27um Ni ON THE TERMINATION SECTION.

51940-150LF Power Pin:30u"/0.76um Au OVER 50u"/1.27um Ni ON THE CONTACT AREA,
AND 78u"/2.00um Sn PLATING OVER 50u"/1.27um Ni ON THE TERMINATION SECTION.

PART NUMBER 51940-150LF MEETS EUROPEAN UNION DIRECTIVE AND OTHER COUNTRY REGULATIONS AS DESCRIBED IN GS-22-008.

THE HOUSING WILL WITHSTAND EXPOSURE TO 260° PEAK TEMPERATURE FOR 10 SECONDS IN A WAVE SOLDER APPLICATION WITH A CIRCUIT BOARD.

④ MANUFACTURER'S NAME, P/N, AND DATE CODE TO APPEAR ON THIS SURFACE.

5. PRODUCT SPECIFICATION GS-12-149.
APPLICATION SPECIFICATION BUS-20-067.

6. PACKAGED IN TRAYS.

PCB NOTES:


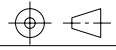
7. ALL HOLE DIAMETERS ARE FINISHED HOLE SIZE.

⑧ MOUNTING HOLES, WHERE APPLICABLE, ARE UNPLATED.

⑨ $\varnothing.0453 \pm .0010$ [1.151 \pm 0.025] DRILLED HOLES PLATED WITH
.0003 [0.008] MIN SnPb OVER .001 [0.03]
TO .003 [0.08] Cu PLATING TO ACHIEVE
 $\varnothing.040 \pm .003$ [1.02 \pm .07] HOLE.

⑩ "DIM XXX" TO BE DETERMINED BY THE CUSTOMER.

⑪ CONNECTOR KEEP-OUT ZONE.

mat'l code				SEE NOTE 2		tolerances unless otherwise specified		CUSTOMER		 www.fciconnect.com	
ltr	ecn no.	dr	date	linear	.XX±.01/0.X±0.3		COPY				
A					.XXX±.005/0.XX±0.13		projection				
					.XXX±.0020/0.XXX±0.051		INCH/MM				
				angles	$0^\circ \pm 2^\circ$		scale		1:1		
				dr	JM Guo	06/13/05	INCH/MM		product family		PwrBlade
				engr	SLUO	06/13/05	size		dwg no		213
				chr	VICTOR LIN	06/13/05	A		51940-150		sheet 3 of 3
				appd	JOSEPH HSIA	06/13/05					
sheet index		revision sheet									

cage code 22526