



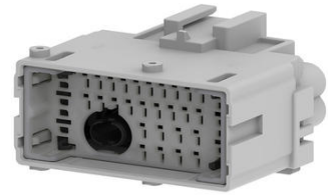
Part Number : [2159580446](#)

Product Description : MX-DaSH High-Speed MGE Male Connector Assembly, 31+1 Circuits, Keying Option K, Gray

Series Number : 215958

Status : Active

Product Category : Connector Housings



Documents and Resources

Drawings

[2159580446_sd.pdf](#)

[2159580150-PK-000.pdf](#)

3D Models and Design Files

[STEP AP242](#)

[SOLIDWORKS](#)

[Creo](#)


Specifications

[2159580000-AS-000.pdf](#)

[2159580000-PS-000.pdf](#)

Product Environment Compliance

Compliance

GADSL/IMDS	Compliant
China RoHS	 per SJ/T 11365-2006
EU ELV	Compliant per 2000/53/EC
Low-Halogen Status	Low-Halogen per IEC 61249-2-21
REACH SVHC	Not Contained per D(2024)6225-DC (07 Nov 2024)
EU RoHS	Compliant per EU 2015/863

[Compliance Statements](#)

- EU RoHS

- REACH SVHC
- Low-Halogen

Industry Documents

- IPC 1752A Class C
- IPC 1752A Class D
- Molex Product Compliance Declaration
- IEC-62474
- chemSHERPA (xml)

Substances of Interest

- PFAS

EU RoHS Certificate of Compliance

Additional Product Compliance Information

Part Details

General

Status	Active
Category	Connector Housings
Series	215958
Description	MX-DaSH High-Speed MGE Male Connector Assembly, 31+1 Circuits, Keying Option K, Gray
Application	Power, Wire-to-Wire
Product Name	MX-DaSH
Type	Static
UPC	196823563706

Physical

Circuits (maximum)	32
Color - Resin	Gray
Gender	Plug
Glow-Wire Capable	No
Keying to Mating Part	Yes
Lock to Mating Part	Yes
Material - Resin	PBT
Net Weight	19.100/g
Number of Rows	4
Packaging Type	Partitioned Carton

Panel Mount	No
Pitch - Mating Interface	3.50mm, 2.75mm, 2.50mm
Polarized to Mating Part	Yes
Stackable	No
Temperature Range - Operating	-40° to +125°C

Mates With / Use With

Mates with Part(s)

Description	Part Number
MX-DaSH High-Speed MGE Female Connector Assembly, 31+1 Circuits, Keying Option K, Gray	<u>2159580336</u>

Use with Part(s)

Description	Part Number
Use With	1.20mm and 2.80mm AK Male Terminals, MGE Plug

This document was generated on Jan 22, 2026