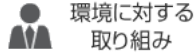




HOME



会社概要

環境に対する
取り組みカタログ・サンプル
STEPファイル請求

問い合わせ

We contribute to manufacturing with delivery date, quality and service.

[Careers](#) | [site map](#)E-Mail: marketing@satoparts.co.jp

Model number search

Search

Search by category

Search

【Refine search】

By application and shape

Classification

- LED bracket
 Neon bracket

Search for

Supplemental information (PDF)

- ▶ DB notes
- ▶ BN notes
- ▶ General notes

 スクリューレス端子台
Screwless Terminal ネジ式端子台
Screw Terminal ヒューズホルダー、
ヒューズ管
Fuse Holder, Fuse 表示台、LEDブラケット、
ネオンブラケット
Indicator ツマミ
Knob コンセント、コネクタ
Connector ターミナル、チップジャック
Terminal, Tip Jack クリップ、ソケット、プラグ
Clip, Socket, Plug プッシング、ラグ板
Bushing, Lug アクセサリー
Accessory[home](#) > [Indicator light, LED bracket, neon bracket list](#) > DB-15-F

DB-15-F



made in Japan

[Information on RoHS Directive](#)

Emitting color

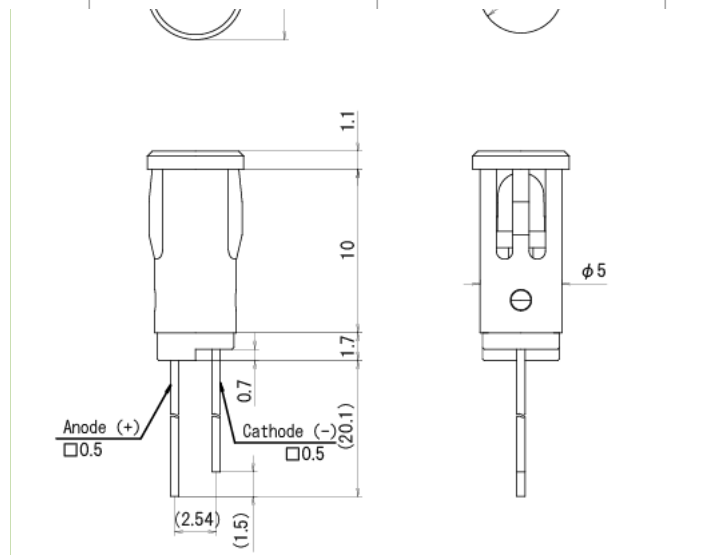
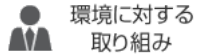


specification

Withstand voltage	AC 500 V (1 minute)
Insulation resistance	DC 500 V, 100 MΩ or more
Body material	Polycarbonate
Main insulation material	PBT
Terminal bracket	LED lead wire (□ 0.5)
Body color	R (red), G (green), OR (orange), BL (blue)
Panel mounting method	One-touch attachment
Mounting thickness	1.6mm MAX
Usage notes	1 This product does not have a built-in protective resistor, so use a protective resistor in series according to the working voltage. 2 Please pay attention to the polarity when connecting. (3) When bending lead wires, bend them at a distance of 2 mm or more from the bottom, and perform soldering after bending. 4 Mounting hole dimensions may differ depending on mounting plate thickness, so please check.

[Product Summary](#) / [Color](#) / [specification](#) / [Dimension drawing](#) / [Order number](#) / [Maximum rating and electrical and optical characteristics](#) / [Protection resistance chart](#) /

[Request a STEP file or sample of the product you are currently](#)



Unit: mm

Order number

Ordering model number DB-15-F- [light emitting color]
 ordering example DB-15-FR (when ordering in red)

Maximum rating and electrical and optical characteristics

It is the characteristic of only the element being used

Color	Recommended operating current I_F (mA)	Peak emission wavelength λ_p (nm)	Maximum rating ($T_a = 25^\circ\text{C}$)					Electrical and optical characteristics ($T_a = 25^\circ\text{C}$)							
			Forward current I_F (mA)	Reverse voltage V_R (V)	Allowable loss P_D (mW)	Operating temperature TOPR ($^\circ\text{C}$)	Storage temperature TSTG ($^\circ\text{C}$)	Forward voltage V_F		Reverse current I_R		Light intensity (on axis) I_v			
								Standard (V)	Maximum (V)	I_F (mA)	Maximum (μA)	V_R (V)	Minimum (mcd)	Max (mcd)	I_F (mA)
R (red)	Ten	627	30	Five	75	-40 to +85	-40 to +85	1.9	2.3	Ten	Ten	Five	Ten	50	Ten
G (green)	Ten	565	twenty five	Five	62.5	-40 to +85	-40 to +85	2	2.4	Ten	Ten	Five	Ten	30	Ten
Y (yellow) / OR (orange)	Ten	590	30	Five	75	-40 to +85	-40 to +85	1.95	2.4	Ten	Ten	Five	6	50	Ten
BL (blue)	Ten	460	30	Five	120	-40 to +85	-40 to +85	3.3	Four	20	50	Five	500	1300	20

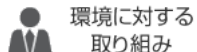
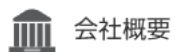
Protection resistance chart

The following protective resistance values are calculated under general conditions. Depending on the actual use conditions (type of environment / resistor type and characteristics), it is necessary to allow for extra capacity (W number).

Color	R (red)	G (green)	Y (yellow) / OR (orange)	BL (blue)
Set current	10 mA	10 mA	10 mA	10 mA

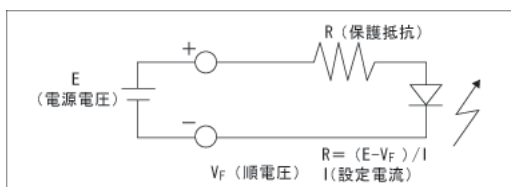
[Product Summary](#) / [Color](#) / [specification](#) / [Dimension drawing](#) / [Order number](#) / [Maximum rating and electrical and optical characteristics](#) / [Protection resistance chart](#) /

Request a STEP file or sample of the product you are currently



7V	510 Ω (1/8 W)	510 Ω (1/8 W)	510 Ω (1/8 W)	390 Ω (1/8 W)
8V	620 Ω (1/8 W)	620 Ω (1/8 W)	620 Ω (1/8 W)	510 Ω (1/8 W)
9V	750 Ω (1/8 W)	680 Ω (1/8 W)	680 Ω (1/8 W)	620 Ω (1/8 W)
10V	820 Ω (1/8 W)	820 Ω (1/8 W)	820 Ω (1/8 W)	680 Ω (1/8 W)
11V	910 Ω (1/4 W)	910 Ω (1/4 W)	910 Ω (1/4 W)	820 Ω (1/8 W)
12V	1k Ω (1/4 W)	1k Ω (1/4 W)	1k Ω (1/4 W)	910 Ω (1/4 W)
13V	1.1k Ω (1/4 W)	1.1k Ω (1/4 W)	1.1k Ω (1/4 W)	1k Ω (1/4 W)
14V	1.2k Ω (1/4 W)	1.2k Ω (1/4 W)	1.2k Ω (1/4 W)	1.1k Ω (1/4 W)
15V	1.3k Ω (1/4 W)	1.3k Ω (1/4 W)	1.3k Ω (1/4 W)	1.2k Ω (1/4 W)
16V	1.5 k Ω (1/4 W)	1.3k Ω (1/4 W)	1.5 k Ω (1/4 W)	1.3k Ω (1/4 W)
17V	1.5 k Ω (1/4 W)	1.5 k Ω (1/4 W)	1.5 k Ω (1/4 W)	1.3k Ω (1/4 W)
18V	1.6k Ω (1/4 W)	1.6k Ω (1/4 W)	1.6k Ω (1/4 W)	1.5 k Ω (1/4 W)
19V	1.8k Ω (1/4 W)	1.6k Ω (1/4 W)	1.8k Ω (1/4 W)	1.6k Ω (1/4 W)
20V	1.8 k Ω (1/2 W)	1.8 k Ω (1/2 W)	1.8 k Ω (1/2 W)	1.6k Ω (1/4 W)
21V	2 k Ω (1/2 W)	1.8 k Ω (1/2 W)	2 k Ω (1/2 W)	1.8 k Ω (1/2 W)
22V	2 k Ω (1/2 W)	2 k Ω (1/2 W)	2 k Ω (1/2 W)	1.8 k Ω (1/2 W)
23V	2.2 k Ω (1/2 W)	2 k Ω (1/2 W)	2.2 k Ω (1/2 W)	2 k Ω (1/2 W)
24V	2.2 k Ω (1/2 W)	2.2 k Ω (1/2 W)	2.2 k Ω (1/2 W)	2 k Ω (1/2 W)

Precautions for use



1. When using the LED bracket of SATO parts, be sure to insert protective resistors in series. Please refer to the above basic circuit and calculation formula
2. Since the LEDs have polarity, please be careful when connecting.
3. Please check under actual conditions before mounting on a panel etc. and using it.
4. For lead bending, bend at a point 2 mm or more from the root and solder after bending.
5. Since LEDs are semiconductors and can be damaged by static electricity, please handle them after releasing human body and other static electricity when working.

Solder heat resistance condition

Hand soldering (with soldering iron) conditions

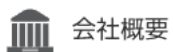
Tip temperature	295 ± 5 °C
Fitting time	3 ± 1 second
Number of times	Once

[Product Summary](#) / [Color](#) / [specification](#) / [Dimension drawing](#) / [Order number](#) / [Maximum rating and electrical and optical characteristics](#) / [Protection resistance chart](#) /

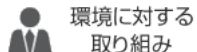
[Request a STEP file or sample of the product you are currently](#)



HOME



会社概要

環境に対する
取り組みカタログ・サンプル
STEPファイル請求

問い合わせ

DXF / Environmental Substance Report (chemSHERPA) Download

- ※ Please read the [DXF file terms](#) and [conditions](#) when downloading a [DXF file](#).
- ※ For the Environmentally Hazardous Substances Report, please refer to our [Environmental Initiatives](#).
- ※ Please [PDF refer](#) to the [download procedure manual](#) for tools to view chemSHERPA data.
Also, please refer to [PDF here](#) for the survey list.

Model number	DXF file	Environmentally Hazardous Substances Report (chemSHERPA)
DB-15-F	download	
DB-15-FR		download
DB-15-FG		download
DB-15-F-OR		download
DB-15-F-BL		download

[HOME](#) | [Company Profile](#) | [Terms of use](#) | [privacy policy](#) | [site map](#)

COPYRIGHT © SATO PARTS CO., LTD. ALL RIGHTS RESERVED.

Sato Parts Co.
, Ltd. 〒 113-0033 Hongkyo, Bunkyo-ku, Tokyo 3-42-1
Mitomo Building 3F