



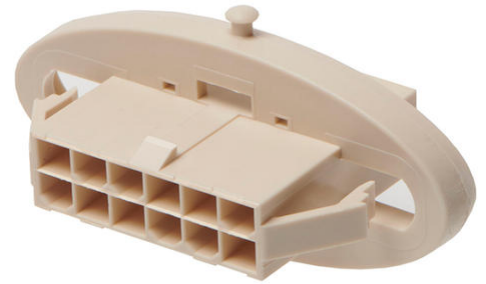
**Part Number :** [2070170012](#)

**Product Description :** Mini-Fit Sigma Sealed Plug Housing, Dual Row, 4.20mm Pitch, 12 Circuits, UL94V-0, Natural

**Series Number :** 207017

**Status :** Active

**Product Category :** Connector Housings



---

## Documents and Resources

### Drawings

[2070170012\\_sd.pdf](#)

[2070170000-PK-000.pdf](#)

### 3D Models and Design Files

[STEP AP242](#)

[SOLIDWORKS](#)

[Creo](#)

### Specifications

[2070170000-AS-000.pdf](#)

[2070170000-PS-000.pdf](#)


[2070170000-TS-000.pdf](#)

[2070170001-TS-000.pdf](#)

---

## Product Environment Compliance

### Compliance

GADSL/IMDS	Not Relevant
China RoHS	 per SJ/T 11365-2006
EU ELV	Not Relevant
Low-Halogen Status	Not Low-Halogen per IEC 61249-2-21
REACH SVHC	Contains 1,1'-(Ethane-1,2-diyl)bis[pentabromobenzene] per D(2025)7771-DC (04 Feb 2026)

EU RoHS	Compliant per EU 2015/863
---------	---------------------------

### Compliance Statements

- EU RoHS
- REACH SVHC
- Low-Halogen

### Industry Documents

- IPC 1752A Class C
- IPC 1752A Class D
- Molex Product Compliance Declaration
- IEC-62474
- chemSHERPA (xml)

### Substances of Interest

- PFAS

### EU RoHS Certificate of Compliance

### Additional Product Compliance Information

## Part Details

### General

Status	Active
Category	Connector Housings
Series	207017
Description	Mini-Fit Sigma Sealed Plug Housing, Dual Row, 4.20mm Pitch, 12 Circuits, UL94V-0, Natural
Application	Power, Wire-to-Wire
Product Name	Mini-Fit Sigma Sealed
UPC	193264428533

### Agency

UL	E29179
----	--------

### Physical

Circuits (maximum)	12
Color - Resin	Natural
Flammability	94V-0

Gender	Plug
Glow-Wire Capable	No
Keying to Mating Part	No
Lock to Mating Part	Yes
Material - Resin	Nylon
Net Weight	6.850/g
Number of Rows	2
Packaging Type	Bag
Panel Mount	Yes
Pitch - Mating Interface	4.20mm
Pitch - Termination Interface	4.20mm
Polarized to Mating Part	Yes
Stackable	No
Temperature Range - Operating	-40° to +105°C

---

## Mates With / Use With

### Mates with Part(s)

Description	Part Number
Mini-Fit Jr. Dual Row Receptacle Housings	<u><a href="#">46992</a></u>
Mini-Fit Jr. Receptacle Housings	<u><a href="#">5557</a></u>
Mini-Fit TPA2 and Mini-Fit Sigma Dual Row Receptacle Housings	<u><a href="#">172708</a></u>

### Use with Part(s)

Description	Part Number
Mini-Fit Sigma Sealed Cap for 12 Circuit Plug Housing	<u><a href="#">2070190012</a></u>
Mini-Fit Sigma Terminal Position Assurance (TPA) Retainer, 4.20mm Pitch, UL 94V-0, Glow-Wire Capable, 6 Circuits, Natural	<u><a href="#">1727092006</a></u>
Mini-Fit TPA2/Sigma Male Crimp Terminals	<u><a href="#">172765</a></u>
Mini-Fit TPA2/Sigma Male Crimp Terminals	<u><a href="#">203070</a></u>

---

This document was generated on Apr 13, 2026