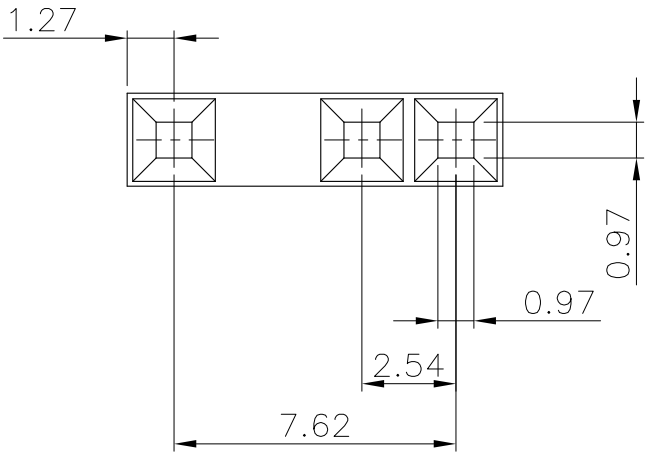
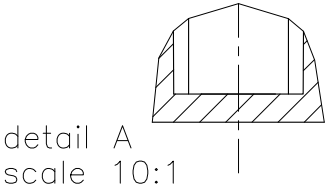
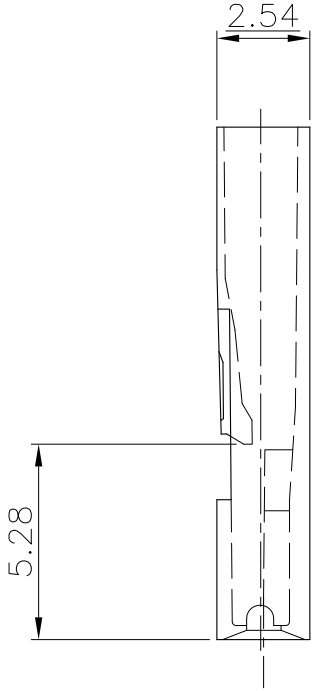
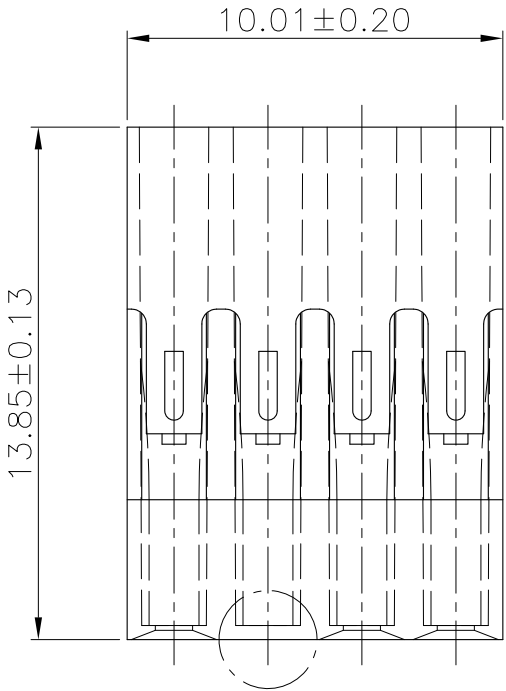


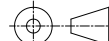


PRODUCT NUMBER
71627-001LF

"LF" INDICATES THE PRODUCT IS RoHS
COMPLIANT, SEE NOTE 5.



NOTES:

1. MATERIAL: POLYPHENYLENE OXYDE (NORYL) COLOR BLACK UL 94V-1
 2. LATCH TERMINAL MUST WITHSTAND A MIN PULL-OUT FORCE OF 2.9 Kg
 3. TERMINALS MUST BE CRIMPED PROPERLY FOR SATISFACTORY LATCHING
SEE TA-295 FOR CRIMPING INSTRUCTIONS.
 4. THIS HOUSING IS INTENDED FOR USE WITH MINI PV TERMINAL WITH 22-36
GAUGE WIRE.
 5. - RoHS COMPATIBLE PRODUCT SPECIFICATIONS
 - a - LABELING:
 - MEETS PACKAGING SPECS AS PER GS-14-920
 - b - LEGAL STATEMENT: SEE GS-22-008
- THE PRODUCT IS NOT INTENDED TO BE EXPOSED TO A
MANUFACTURING SOLDER PROCESS.

mat'l. code 16-502-001				surface ISO 1302 ✓				tolerance ISO 406 ISO 1101				projection 				product family BERGCON																					
ltr ecn no dr date				tolerances unless otherwise specified								 mm scale 1:1 				title MINI-LATCH POLARIZED S.R.HOUSING dwg no sheet 1 of 1 size 71627 A3 type CUSTOMER Drawing																					
A H88078		CVE		89.01.12		angles linear		.X ±0.3																													
B F00405		VIB		00.05.16				.XX ±0.15																													
C F05-0235		DLE		05.08.25				.XXX ±0.05																													
D F05-0286		DLE		05.11.07		dr		D LEGRAND				05.08.18																									
E F06-0218		DLE		06.07.11		engr		P NIZZI				05.08.18																									
F F07-0226		LMU		07.06.26		chr		P NIZZI				05.08.18																									
G B-14321		LMU		13.03.21		appd		P NZ				05.08.18																									
sheet index		revision sheet																																			