



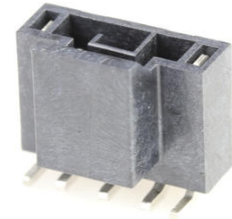
**Part Number :** [1054311203](#)

**Product Description :** Nano-Fit Vertical Header, Surface Mount, 2.50mm Pitch, Single Row, 3 Circuits, 0.38µm Gold (Au) Plating, with Pick-and-Place Tape, Black, Glow-Wire Capable

**Series Number :** 105431

**Status :** Active

**Product Category :** PCB Headers and Receptacles



---

## Documents and Resources

### Drawings

[1054311203 sd.pdf](#)

### 3D Models and Design Files

[STEP AP242](#)

[SOLIDWORKS](#)

[Creo](#)

[Symbol and Footprint \(Multi-Format\)](#)

### Specifications

[AS-105405-001-001.pdf](#)

[1054051000-PS-CH-000.pdf](#)

[1054051000-PS-ES-000.pdf](#)

[1054051000-PS-SK-000.pdf](#)


[PS-105405-001-001.pdf](#)

[1054050000-TS-000.pdf](#)

---

## Product Environment Compliance

### Compliance

GADSL/IMDS	Compliant with Exemption 44; 34; 33
China RoHS	 per SJ/T 11365-2006
EU ELV	Not Relevant
Low-Halogen Status	Low-Halogen per IEC 61249-2-21

REACH SVHC	Not Contained per D(2025)6375-DC (05 Nov 2025)
EU RoHS	Compliant per EU 2015/863

### Compliance Statements

- EU RoHS
- REACH SVHC
- Low-Halogen

### Industry Documents

- IPC 1752A Class C
- IPC 1752A Class D
- Molex Product Compliance Declaration
- IEC-62474
- chemSHERPA (xml)

### Substances of Interest

- PFAS

### EU RoHS Certificate of Compliance

### Additional Product Compliance Information

## Part Details

### General

Status	Active
Category	PCB Headers and Receptacles
Series	105431
Description	Nano-Fit Vertical Header, Surface Mount, 2.50mm Pitch, Single Row, 3 Circuits, 0.38µm Gold (Au) Plating, with Pick-and-Place Tape, Black, Glow-Wire Capable
Application	Power, Wire-to-Board
Component Type	PCB Header
Product Name	Nano-Fit
UPC	191128961035

### Agency

UL	E29179
----	--------

### Electrical

Current - Maximum per Contact	6.5A
Voltage - Maximum	250V AC (RMS)/DC

## Physical

Breakaway	No
Circuits (Loaded)	3
Circuits (maximum)	3
Color - Resin	Black
Durability (mating cycles max)	50
First Mate / Last Break	No
Flammability	94V-0
Glow-Wire Capable	Yes
Keying to Mating Part	Yes
Lock to Mating Part	Yes
Material - Metal	Brass
Material - Plating Mating	Gold
Material - Plating Termination	Tin
Material - Resin	Liquid Crystal Polymer
Net Weight	0.670/g
Number of Rows	1
Orientation	Vertical
Packaging Type	Embossed Tape on Reel
PCB Locator	No
PCB Thickness - Recommended	1.60mm
Pitch - Mating Interface	2.50mm
Pitch - Termination Interface	2.50mm
Plating min - Mating	0.380µm
Plating min - Termination	0.762µm
Polarized to Mating Part	Yes
Polarized to PCB	No
Robotic Placement	Vacuum Pick-Up Tape
Temperature Range - Operating	-40° to +125°C
Termination Interface Style	Surface Mount

---

## Mates With / Use With

## Mates with Part(s)

Description	Part Number
Nano-Fit Receptacle Housing, TPA Capable, 2.50mm Pitch, Single Row, 3 Circuits, Black, Glow-Wire Capable	<u>1053071203</u>
Nano-Fit Receptacle Housing, TPA Capable, 2.50mm Pitch, Single Row, 3 Circuits, Black, Glow-Wire Capable, for UL 1569/1007 Wire	<u>2263541203</u>

---

This document was generated on Jan 23, 2026