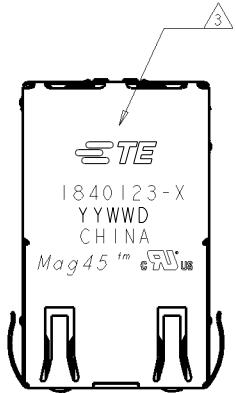


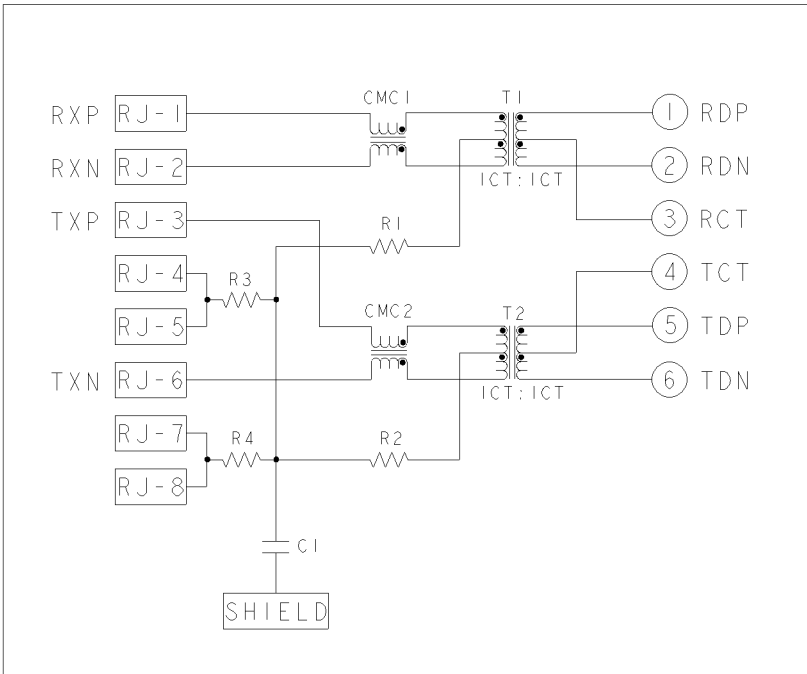
LOC	DIST	REVISIONS					
AA	00	#	LTN	DESCRIPTION	DATE	DWN	APPV
			D	ECO-09-012326	14AUG2009	RO	RAO
			E	ECO-11-019412	20JUN2011	PP	LJ

S866ETP9 MAGNETIC CIRCUIT STACKED

TOP AND BOTTOM PORTS



VIEW R
SCALE 3:1



C1 = 1000pF, 2kV, ±10%, X7R DECOUPLING CAP.
R1-R4 = 75 OHMS, 1/16 W, ±5% RESISTORS

MATERIALS:
PLASTIC HOUSING: BLACK, THERMOPLASTIC FLAMMABILITY RATING UL 94V-0
SHIELD: BRASS, PLATED WITH 0.76 µm SEMI-BRIGHT NICKEL, POST DIPPED WITH 2.54 µm MIN SAC SOLDER ON SOLDER TAILS
CONTACTS: PHOSPHOR BRONZE, 1.27 µm MIN OVERALL NICKEL UNDER PLATE WITH SELECT 1.27 µm MIN GOLD AT MATING INTERFACE AND 2.54 µm MIN MATTE TIN ON SOLDER TAILS.
LED: DIFFUSED EPOXY LENS, CARBON STEEL LEAD FRAME
LEADS PREPLATED WITH 2.03 µm MIN SILVER OVER 1.02 µm MIN NICKEL UNDERPLATE OVER 1.02 µm MIN COPPER UNDERPLATE. POST-PLATED WITH 2.54 µm MIN MATTE TIN AND/OR SAC SOLDER DIP OR PURE TIN SOLDER DIP

MAGNETICS
APPLICATION: 10/100 BASE-T
IMPEDANCE: 100 OHMS
TURNS RATIO (CHIP:CABLE): TX = 1:1, RX = 1:1
OPEN CIRCUIT INDUCTANCE (OCL): 350µH MIN @100kHz, 0.1VRMS, 8mADC BIAS FROM -40°C TO +85°C, TX AND RX
PERFORMANCE @ 25°C:
INSERTION LOSS (IL): 1.1dB MAX FROM 0.5MHz TO 100MHz
RETURN LOSS (RL): 18dB MIN FROM 0.5MHz TO 30MHz
18-20LOG(f/30)dB MIN FROM 30.1MHz TO 60MHz
12dB MIN FROM 60.1MHz TO 80MHz
CROSSTALK ATTENUATION: 35dB MIN FROM 0.5MHz TO 40MHz
33-20LOG(f/50)dB MIN FROM 40.1MHz TO 100MHz
COMMON MODE REJECTION RATIO (CMRR): 30dB MIN FROM 0.5MHz TO 100MHz
ISOLATION VOLTAGE: 2250VDC (MAX) FOR 60 SECONDS WITH A RISE TIME OF 500V/SEC AND WITH ALL PORTS CONNECTED.

TE CONNECTIVITY LOGO, PART NUMBER, DATE CODE, COUNTRY OF ORIGIN, AGENCY APPROVAL MARKING LOGO LOCATED IN THE APPROXIMATE AREA SHOWN. DATE CODE YY IS YEAR, WW IS WORK WEEK, D IS DAY OF WEEK, WITH SUNDAY=1

4. OPERATING TEMPERATURE: FROM -40° C TO +85° C.

RJ45 CAVITY CONFORMS TO FCC RULES AND REGULATION PART 68 SUBPART F.

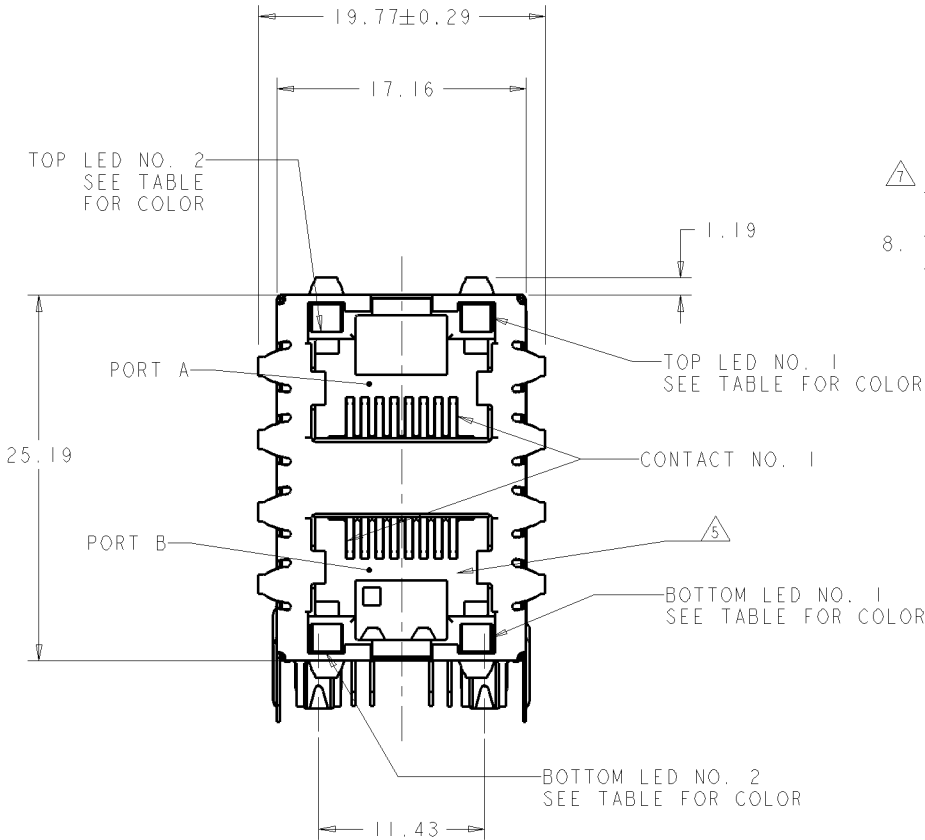
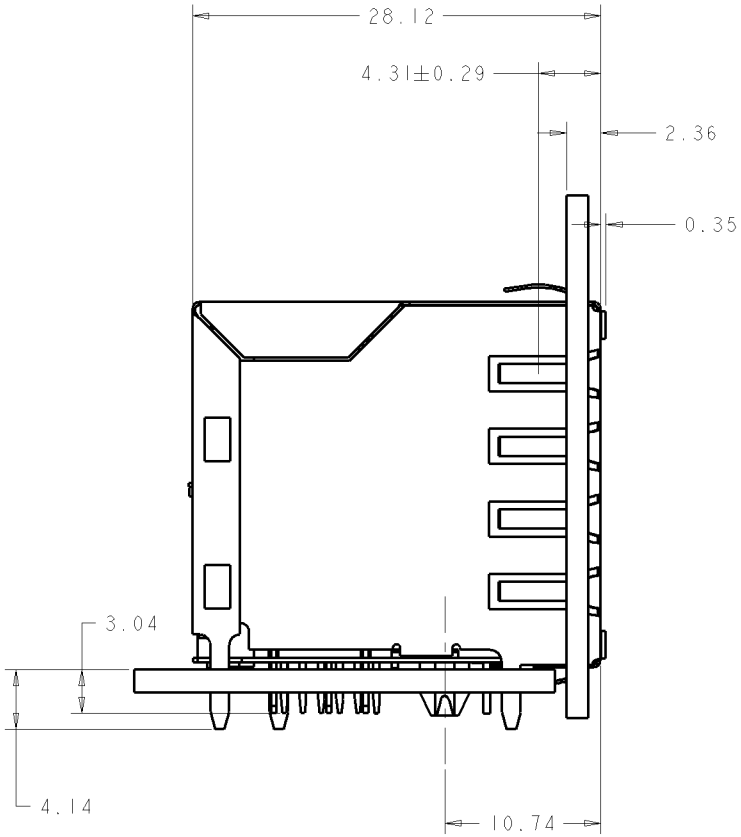
6. LED'S COMPLIANT WITH IEC60825-1 SAFETY OF LASER PRODUCTS WHEN OPERATED AT CURRENT OF 20 mA MAX.
LED IS DRIVEN WITH CONSTANT CURRENT AT APPROX 20mA.
LED COLOR:

DOMINANT WAVELENGTH (λD): GREEN 568 nm TYP @IF=20mA
FORWARD VOLTAGE (VF): GREEN 2.2V TYP @ IF=20mA

DOMINANT WAVELENGTH (λD): YELLOW 588 nm TYP @IF=20mA
FORWARD VOLTAGE (VF): YELLOW 2.1V TYP @ IF=20mA

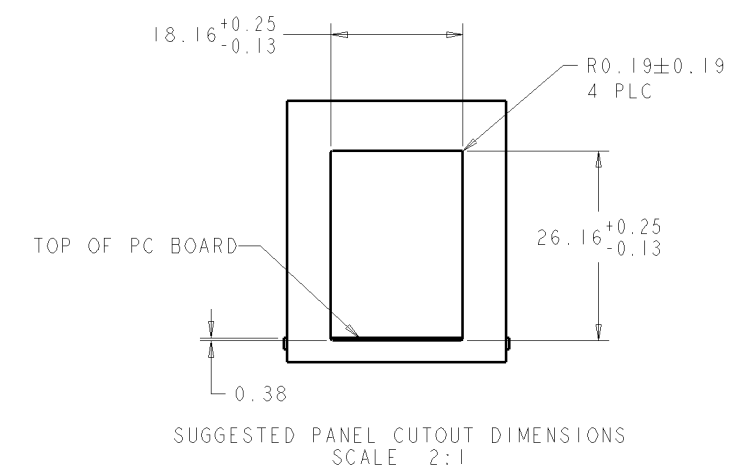
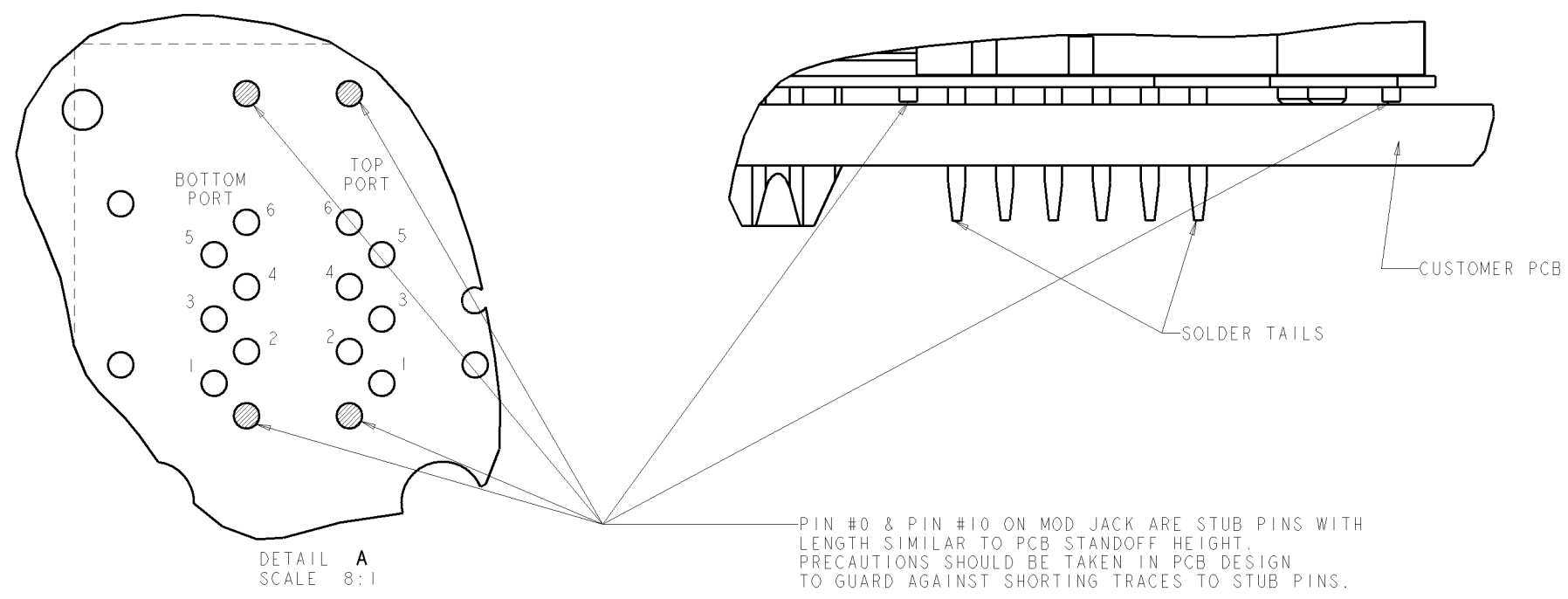
INDICATED CONNECTIONS ARE FOR HUB CONFIGURATION. THE MAGNETICS ARE SYMMETRICAL AND SUPPORT AUTO-MDI/MDIX.


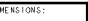
8. THESE PARTS ARE RECOMMENDED FOR WAVE SOLDERING PROCESS, PEAK SOLDERING TEMPERATURE IS 260 °C MAX, 10 SECONDS MAX.



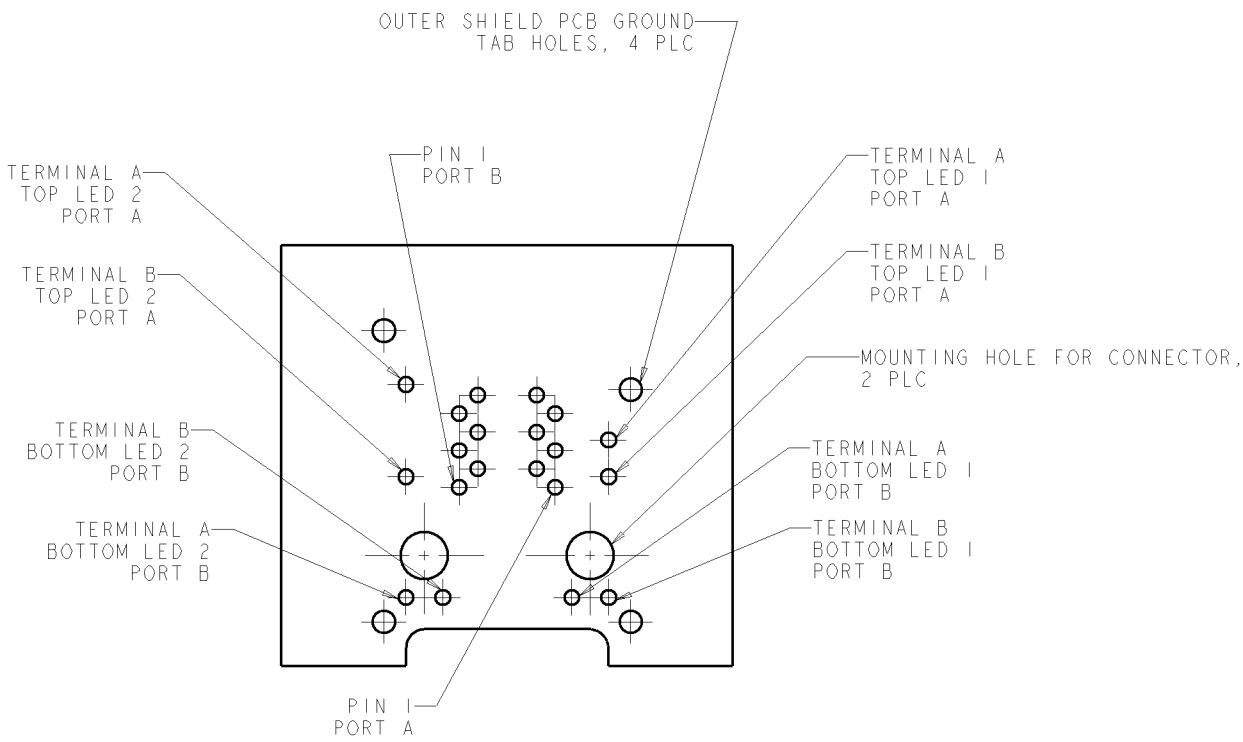
GRN/YEL	GRN/YEL	GRN/YEL	GRN/YEL	1840123-4
GREEN	YELLOW	GREEN	YELLOW	1840123-3
YELLOW	GREEN	GREEN	YELLOW	1840123-2
GREEN	GREEN	GREEN	GREEN	1840123-1
BOTTOM LED NO. 2	BOTTOM LED NO. 1	TOP LED NO. 2	TOP LED NO. 1	PART NO.

THIS DRAWING IS A CONTROLLED DOCUMENT.		DWN	27FEB2006	TE Connectivity	
DIMENSIONS: mm [INCHES]		CHK	YOU		
TOLERANCES UNLESS OTHERWISE SPECIFIED.		APPV	K. ZHU	NAME	
0. PLC ±0.25		27FEB2006		2X1 MAG45TM, 10/100 S866ETP9 W/LEDs	
1. PLC ±0.25		108-2100		WAVE PANEL GROUND SHIELD	
2. PLC ±0.25		APPLICATION SPEC		SIZE	
3. PLC ±0.25		WEIGHT		CAGE CODE	
4. PLC ±0.25		CUSTOMER DRAWING		DRAWING NO	
FINISH		SCALE		RESTRICTED TO	
MATERIAL		SHEET 1 OF 3		REV E	

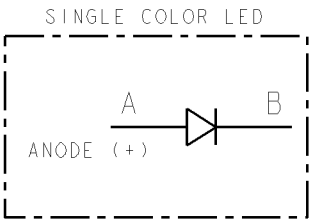
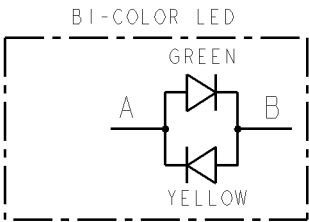


THIS DRAWING IS A CONTROLLED DOCUMENT.		DATE RK YOUNG 27FEB2006	 TE Connectivity	
		CNDR ZHU 27FEB2006		
DIMENSIONS: mm [INCHES]		TOLERANCES UNLESS OTHERWISE SPECIFIED APD - W ZHU 27FEB2006 PRODUCT SPEC 108-2100 APPLICATION SPEC	NAME 2X1 MAG45TM.10/100 S866ETP9 W/LEDS WAVE PANEL GROUND SHIELD	
		0 PLC ±0.25 1 PLC ±0.25 2 PLC ±0.25 3 PLC ±0.25 4 PLC ±0.25 ANGLES ±1°	SIZE A1	
MATERIAL -		FINISH -	CASE CODE 00779	DRAWING NO C-1840123
CUSTOMER DRAWING		WEIGHT -	RESTRICTED TO -	
			SCALE NTS	
			SHEET 2 OF 3	
			REV E	

LOC	QTY	REV	DESCRIPTION	DATE	OWN	APPV
AA	00		SEE SHEET 1			



LED HOLE DESIGNATIONS VIEWED FROM COMPONENT SIDE
SCALE 4:1



THIS DRAWING IS A CONTROLLED DOCUMENT.		DWG. 27FEB2006 CHK. K. YOU APPV. K. ZHU		27FEB2006	
DIMENSIONS: mm [INCHES]		TOLERANCES, UNLESS OTHERWISE SPECIFIED:		PRODUCT SPEC 108-2100	
		0. PLC ±0.25 1. PLC ±0.25 2. PLC ±0.25 3. PLC ±0.25 4. PLC ±0.25 ANGLES ±0.25°		APPLICATION SPEC	
MATERIAL -		FINISH -		WEIGHT -	
CUSTOMER DRAWING		SCALE NTS		SHEET 3 OF 3	

TE Connectivity

2X1 MAG45TM, 10/100 S866ETP9 W/LEDS
WAVE PANEL GROUND SHIELD

SIZE
A

CAGE CODE
00779

DRAWING NO.
1840123

RESTRICTED TO
-

REV
E