



**Part Number :** [1731071310](#)

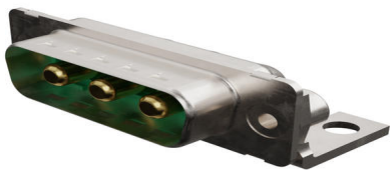
**Product Description :** FCT Mixed Layout D-Sub Connector, Male, Right-Angle, PCB Through Hole, Gold Plating, Tin-plated Shell with Dimples, 14.50mm Metal Bracket and #4-40 Clinch Nut, 3 Circuits Loaded (High Power), Green Insulator

**Series Number :** 173107

**Status :** Active

**Product Category :** D-Sub Connectors

**Engineering Number :** FM3W3P-5091



## Documents & Resources

### Drawings

[1731071310 sd.pdf](#)

[STEP AP242](#)


[SOLIDWORKS](#)

[Creo](#)

[Symbol and Footprint \(Multi-Format\)](#)

## Product Environment Compliance

### Compliance

GADSL/IMDS	Not Relevant
China RoHS	 per SJ/T 11365-2006
EU ELV	Not Relevant
Low-Halogen Status	Not Reviewed per IEC 61249-2-21
REACH SVHC	Not Reviewed per D(2025)4165-DC (25 June 2025)
EU RoHS	Compliant with Exemption 6(c) per EU 2015/863

### Compliance Statements

- EU RoHS
- REACH SVHC

- Low-Halogen

#### Industry Documents

- IPC 1752A Class C
- IPC 1752A Class D
- Molex Product Compliance Declaration
- IEC-62474
- chemSHERPA (xml)

#### Substances of Interest

- PFAS

#### EU RoHS Certificate of Compliance

#### Additional Product Compliance Information

## Part Details

### General

Status	Active
Category	D-Sub Connectors
Series	173107
Description	FCT Mixed Layout D-Sub Connector, Male, Right-Angle, PCB Through Hole, Gold Plating, Tin-plated Shell with Dimples, 14.50mm Metal Bracket and #4-40 Clinch Nut, 3 Circuits Loaded (High Power), Green Insulator
IP Rating	IP20
Magnetic	Yes
Product Name	FCT Products
Type	Mixed Layout
UPC	191130524556

### Electrical

Current - Maximum per Contact	7.5A
Shielded	Yes

### Physical

Circuits (Loaded)	3
Circuits (maximum)	3

Color - Resin	Green
Durability (mating cycles min)	500
Gender	Male
Material - Contact	Copper Alloy
Material - Resin	PBT
Material - Shell	Steel
Net Weight	17.100/g
Number of Rows	1
Orientation	Right-Angle
Packaging Type	Carton
Panel Mount	Rear
Panel Mount Method	Thread-In
PCB Locator	No
PCB Retention	None
PC Tail Length	11.00mm
Polarized to Mating Part	Yes
Polarized to PCB	Yes
Ports	1
Temperature Range - Operating	-55° to +130°C
Termination Style	Through Hole
Waterproof / Dustproof	No
Waterproof / Dustproof Type	IP20

---

## Mates With / Use With

### Mates with Part(s)

Description	Part Number
Mates With	FCT Mixed Layout D-Sub, Size 2, 3W3, Socket

---

This document was generated on Sep 10, 2025