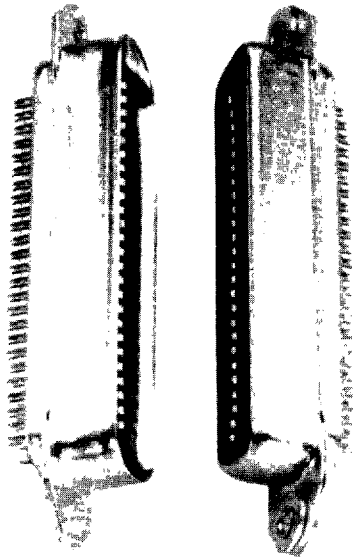
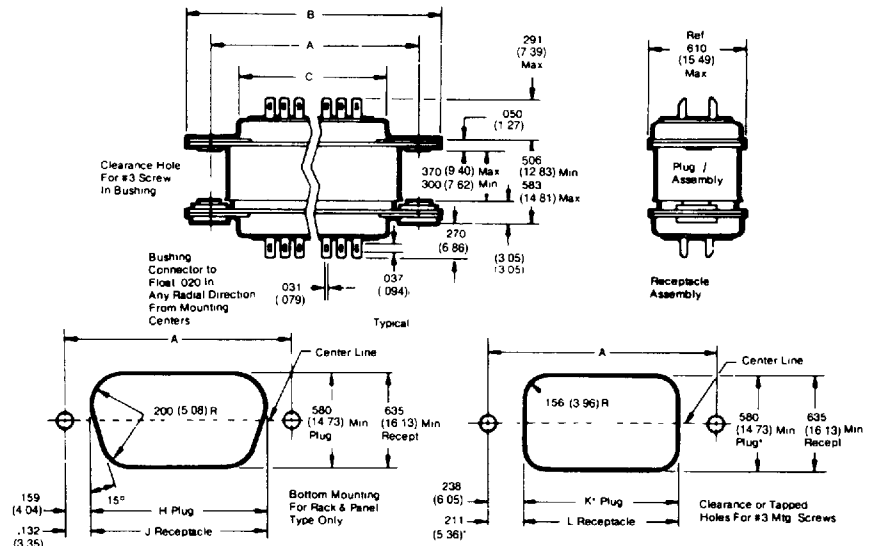


# 57 series rack-and-panel connectors



## dimensions



		14 Contacts		24 Contacts		36 Contacts		50 Contacts		64 Contacts	
		in.	mm	in.	mm	in.	mm	in.	mm	in.	mm
	A	1.417	35.99	1.842	46.79	2.352	59.74	2.947	74.85	3.542	89.97
	B	1.750	44.45	2.175	55.25	2.685	68.20	3.280	83.31	3.875	98.43
	C	.910	23.11	1.335	33.91	1.845	46.86	2.440	61.98	3.035	77.09
Bottom Mounting	H	1.099	27.92	1.524	38.71	2.034	51.66	2.629	66.78	3.224	81.89
	J	1.153	29.29	1.578	40.08	2.088	53.04	2.683	68.15	3.278	83.26
Top Mounting	K	.941	23.90	1.366	34.70	1.876	47.65	2.471	62.76	3.066	77.88
	L	.995	25.27	1.420	36.07	1.930	49.02	2.525	64.14	3.120	79.25

## order information

Contacts	Plugs: Fix-mounted*	Plugs: Fix-mounted**	Solder Cup/Tails With			
			Low Barrier Insert		High Barrier Insert	
			Receptacles: Float-mounted*	Receptacles: Less Float Bushings**	Plugs: Fix-mounted*	Receptacles: Float-mounted*
14	<b>57-10140</b>	consult sales office	<b>57-20140</b>	57-20140-4	N/A	N/A
24	<b>57-10240</b>	<b>57-10240-4***</b>	<b>57-20240</b>	<b>57-20240-2***</b>	N/A	N/A
36	<b>57-10360</b>	57-10360-22	<b>57-20360</b>	57-20360-3	57-10360-14	57-20360-10
50	<b>57-10500</b>	57-10500-48	<b>57-20500</b>	57-20500-15	<b>57-10500-6</b>	<b>57-20500-6</b>
64	—	—	—	—	<b>57-10640</b>	<b>57-20640</b>

Items in bold print are popular, readily available parts

\*.103" Mounting Hole (accepts #3 screw — not included)

\*\*.185" Mounting Hole (accepts #8 screw — not included)

\*\*\*IEEE Type

## IEEE mounting hardware

**408-153819** Inside panel mount hardware includes two each studs, nuts, washers.

**408-153818** Outside panel mount hardware includes two each studs, nuts, washers.

**PLEASE NOTE:** Amphenol rack and panel receptacle connectors have float bushings which allow .020" (6.00mm) radial float. Plugs and receptacles have solder cup tails and accept 22-gauge solid or 24-gauge (maximum) stranded wire. U.L. recognized.

# general configuration — 57 series solder termination

## description

Micro-Ribbon connectors offer a fast, economical and distinctively different method of achieving electrical interconnection.

The heart of the connector is the ribbon contact, selectively plated gold over nickel on a copper alloy base.

With contacts designed to mate easily and positively, the 57 series Micro-Ribbon connector delivers electrically and mechanically sound interconnections time after time.

Exceptionally versatile, 57 series Micro-Ribbon connectors are available in rack and panel, cable to panel, cable to cable and printed circuit types.

## general specifications

Current Capacity .....	5 amps per contact
Voltage Rating .....	700 volts D.C. at sea level 200 volts D.C. at 70,000 ft.
Operating Temperature .....	-55°C to +105°C -67°F to +221°F
Wire Sizes .....	Solid: 22-gauge maximum Stranded: 24-gauge maximum
Contacts .....	Selectively plated 20 microinches gold over 50 microinches nickel on a copper alloy base
Dielectric .....	Diallyl phthalate per MIL-M-14G Type MDG
Shells .....	Zinc-plated steel with clear chromate coating; trapezoidal shape for polarization.

## features

- Copper alloy contacts, selectively plated gold-over-nickel for excellent current-carrying characteristics.
- UL 94 VO rated diallyl phthalate dielectric per MIL-M-14G Type MDG, for operation at up to 700 volts D.C. (sea level) without shorting or flashover. Resists cracking or chipping and has low moisture absorption.
- Float bushings on receptacles allow .020" radial float, for easy mating.
- Zinc-plated steel outer shell, with clear chromate finish, for corrosion resistance.
- Wide, flat mating surfaces, pressed tightly together by flexing action of both contacts, for electrical continuity.
- Positive mating action that wipes contacts clean, removing film or foreign matter, for low contact resistance.
- Solder cup type contact tails (for easy wire attachment) and pin style tails (for printed circuit board attachment) both are available. A high barrier between contact rows also is available.
- A trapezoidal-shape shell that assures correct polarity.

## connector deviations (1,000 piece m.o.q.)

Deviation Number	Deviation Description for 57/157 Series Connectors
(398)	Connector shells and steel hardware nickel plated
(424)	Contacts fully plated, 30 microinches gold over 50 microinches nickel
(438)	Gold flashed contacts on mating area, 100 microinches tin lead on tails, 50 microinches min. nickel underplate
(441)	Tin plated shells
(448)	Contacts selectively plated, 30 microinches min. gold on mating area, 100 microinches tin lead on tails, 50 microinches min. nickel underplate
(450)	Contacts selectively plated, 50 microinches min. gold on mating area, 100 microinches tin lead on tails, 50 microinches min. nickel underplate

NOTE: Not all part numbers are available in all deviations. To verify availability contact the Spectra Strip Division directly, or your local manufacturer's representative or distributor.

## connector deviation ordering information

To order a deviation of a catalog miniature-ribbon connector, add one of the listed deviation numbers in parenthesis to the catalog part number. Example: To order 57-10500 with tin plated shells, request 57-10500 (441).

NOTE: Only one deviation number can be applied to a catalog part number at a time.



UL  
Component  
Recognition



Canadian  
Standards  
Association

FILE E64911

FILE LR 45516-14