

## Data Sheet | Item Number: 283-357

Step-down cover plate; 1 mm thick; only for 2-conductor 283-901 terminal block; gray

<https://www.wago.com/283-357>



Color: ■ gray

Similar to illustration

### Physical data

Width	1 mm / 0.039 inches
Height	94.4 mm / 3.717 inches
Depth	28.4 mm / 1.118 inches

### Material data

Note (material data)	<a href="#">Information on material specifications can be found here</a>
Color	gray
Material group	I
Insulation material (main housing)	Polyamide (PA66)
Flammability class per UL94	V0
Fire load	0.067 MJ
Weight	2.5 g

### Environmental requirements

Processing temperature	-35 ... +85 °C
Continuous operating temperature	-60 ... +105 °C

### Commercial data

Product Group	1 (Rail Mounted Terminal Blocks)
PU (SPU)	100 (25) pcs
Packaging type	Box
Country of origin	DE
GTIN	4017332337212
Customs tariff number	85389099990

**Product Classification**

UNSPSC	39121421
eCl@ss 10.0	27-14-11-33
eCl@ss 9.0	27-14-11-33
ETIM 9.0	EC000886
ETIM 10.0	EC000886
ECCN	NO US CLASSIFICATION

**Environmental Product Compliance**

RoHS Compliance Status	Compliant, No Exemption
------------------------	-------------------------

**Downloads**

**Environmental Product Compliance**

<b>Compliance Search</b>	
Environmental Product Compliance 283-357	<a href="#">↓</a>

**Documentation**

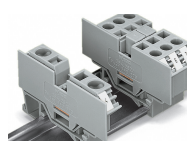
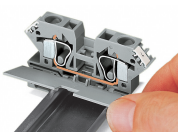
<b>Bid Text</b>			
283-357	19.02.2019	xml 2.49 KB	<a href="#">↓</a>
283-357	02.05.2017	doc 23.50 KB	<a href="#">↓</a>

**CAD/CAE-Data**

<b>CAD data</b>		<b>CAE data</b>	
2D/3D Models 283-357	<a href="#">↓</a>	EPLAN Data Portal 283-357	<a href="#">↓</a>
		WSCAD Universe 283-357	<a href="#">↓</a>
		ZUKEN Portal 283-357	<a href="#">↓</a>

**Installation Notes**

**Installation**



Snapping a cover plate onto open side of terminal block.

A cover plate must also be snapped onto the other side of the larger terminal block.

Subject to changes. Please also observe the further product documentation!

Current addresses can be found at: [www.wago.com](http://www.wago.com)