



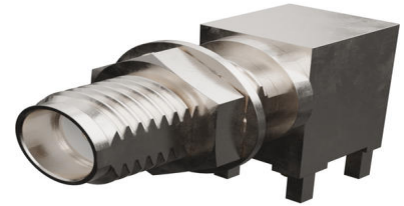
Part Number : [732512200](#)

Product Description : SMA Jack, Right-Angle, Bulkhead Receptacle, PCB, Through Hole, Brass Body, Nickel (Ni) Plated, Jam Nut and Lockwasher Included, 2.79mm Leg Length, 50 Pieces Per Tray, 50 Ohms

Series Number : 73251

Status : Active

Product Category : RF / Coaxial Connectors



Documents and Resources

Drawings

[732512200 sd.pdf](#)

3D Models and Design Files

[STEP AP242](#)

[SOLIDWORKS](#)

[Creo](#)


[Symbol and Footprint \(Multi-Format\)](#)

Specifications

[PS-89675-346-001.pdf](#)

Product Environment Compliance

Compliance

GADSL/IMDS	Not Relevant
China RoHS	 per SJ/T 11365-2006
EU ELV	Not Relevant
Low-Halogen Status	Low-Halogen per IEC 61249-2-21
REACH SVHC	Contains Lead per D(2025)7771-DC (04 Feb 2026)
EU RoHS	Compliant with Exemption 6(c) per EU 2015/863

[Compliance Statements](#)

- EU RoHS
- REACH SVHC
- Low-Halogen

Industry Documents

- IPC 1752A Class C
- IPC 1752A Class D
- Molex Product Compliance Declaration
- IEC-62474
- chemSHERPA (xml)

Substances of Interest

- PFAS

EU RoHS Certificate of Compliance

Additional Product Compliance Information

Part Details

General

Status	Active
Category	RF / Coaxial Connectors
Series	73251
Description	SMA Jack, Right-Angle, Bulkhead Receptacle, PCB, Through Hole, Brass Body, Nickel (Ni) Plated, Jam Nut and Lockwasher Included, 2.79mm Leg Length, 50 Pieces Per Tray, 50 Ohms
Application	RF
Product Name	SMA
Style	PCB
Type	Subminiature
UPC	822348020850

Electrical

Frequency	18 GHz
Impedance	50Ω
Power / Voltage	VOLTAGE: 500 Vrms@Sea Level

Physical

Cable Attachment	N/A
------------------	-----

Gender	Jack
Keying to Mating Part	N/A
Net Weight	5.650/g
Orientation	Right Angle
Packaging Type	Tray
Panel Mount	Yes
Panel Mount Method	Bulkhead
PCB Mounting	Through Hole
PCB Thickness - Recommended	2.40mm
Reverse Polar	No
Wire/Cable Type	N/A

Solder Process Data

Max-Duration	10
Lead-Free Process Capability	SMC&WAVE
Max-Cycle	2
Max-Temp	260

This document was generated on Apr 11, 2026