

NOTES:

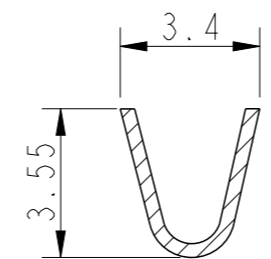
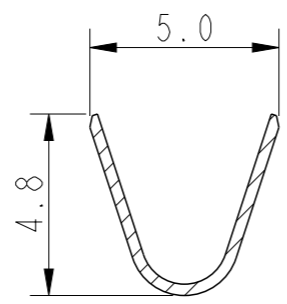
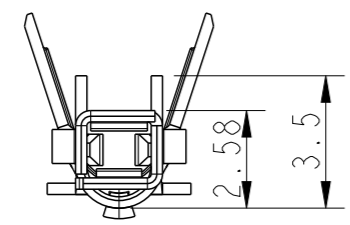
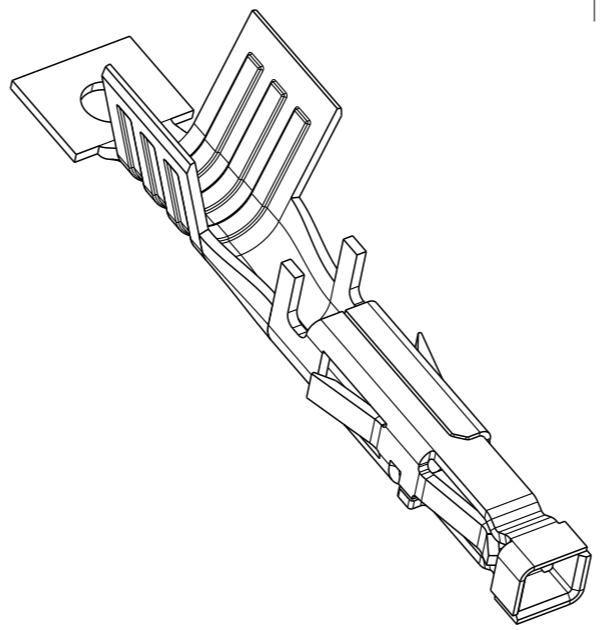
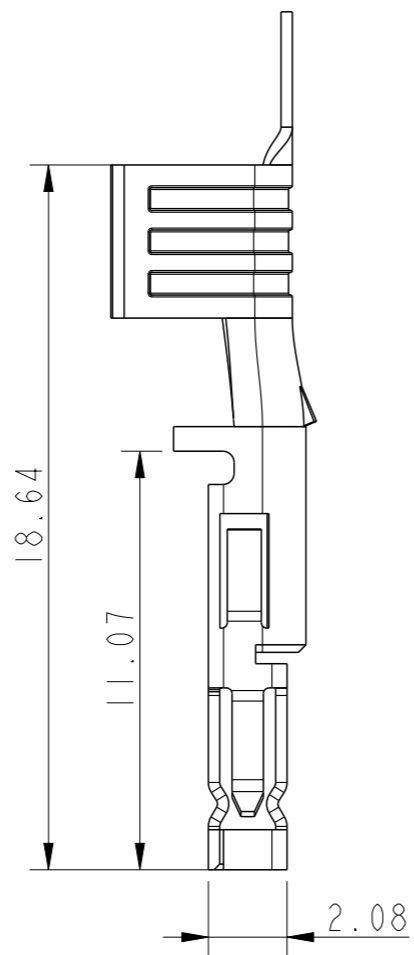
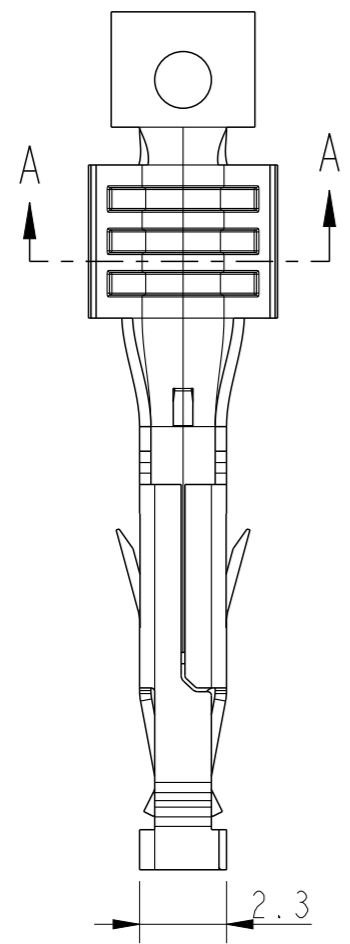
- 1. MATERIAL: HIGH CONDUCTIVITY COPPER ALLOY.
- 2. RoHS & HF COMPLAINT
- 3. PRODUCT SPEC: GS-12-1405
- 4. PACKING SPEC: GS-14-2595
- 6. THIS TERMINAL IS USED WITH AICC RECEPTACLE HOUSING 10142707, 10151088 & 10158453
- 5. PART NUMBER SCHEME:  
10158070- X X X LF

LEAD FREE

STRUCTURE STATUS:  
1: STANDARD TAIL(14-16AWG)  
2: HIGH TAIL (12AWG)




FINISH:  
0: 30μ" GOLD PLATING ON CONTACT AREA  
AND 100μ" TIN ON SOLDER TAIL  
1: 15μ" GOLD PLATING ON CONTACT AREA  
AND 100μ" TIN ON SOLDER TAIL  
2: 100μ" TIN PLATING OVER ALL  
3: GOLD FLASH ON CONTACT AREA  
AND 100μ" TIN ON SOLDER TAIL

MATERIAL:  
1: HIGH CONDUCTIVITY COPPER ALLOY



SECTION A-A  
HIGH TAIL

SECTION A-A  
STANDARD TAIL

spec ref				dr	Akhil Rajan	2020/08/22	projection 	MM 	size	A3	scale	5:1		
tolerance std ISO 406 ISO 1101	TOLERANCES UNLESS OTHERWISE SPECIFIED			eng	Paul Mithun	2020/08/25			ecn no	-				
				chr	-	-			rel level			Released		
				appr	Paul Mithun	2020/08/25	product family		MTK PWR 5.7					
surface  ISO 1302	linear	0.X	±0.30	Amphenol FCi	title	RECEPTACLE CRIMP TERMINAL Minitek Power 5.7 HCC				dwg no	10158070		rev	A
		0.XX	±0.20											
		0.XXX	±0.10											
		angular	0°	±°		cat. no.	-	Product - Customer Drw				sheet 1 of 1		