

PRODUCT NUMBER  
57202-XXX-XXXXXLF

PLATING  
S = 0.38µm GOLD/GXT ON CONTACT AREA  
2µm MIN MATTE TIN ON TAIL

G = 0.76µm GOLD/GXT ON CONTACT AREA  
2µm MIN MATTE TIN ON TAIL

F = GOLD FLASH ON CONTACT AREA  
2µm MIN MATTE TIN ON TAIL

T = 2-6.0µm FULL MATTE TIN

1.27µm MIN NICKEL UNDERPLATING

RoHS COMPATIBLE  
SEE NOTE 7

POLARIZATION, SEE NOTE 6

PACKAGING, SEE NOTE 5

NB OF POS PER ROW : 02 TO 25

STYLE	POST LENGTH ±0.2
51	2.00
52	4.00
53	3.50
54	2.50
55	5.50

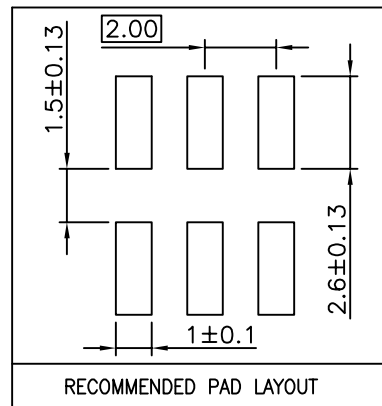
NOTES:

- MATERIAL HOUSING: HIGH TEMP. THERMOPLASTIC  
UL 94V-0, COLOR BLACK
- MATERIAL TERMINAL: COPPER ALLOY
- TO DETERMINE DIMENSIONS:  
N = NUMBER OF POSITIONS PER ROW.
- 7N MIN. PIN RETENTION IN EITHER DIRECTION.
- PACKAGING:
  - = STANDARD PACKAGING IN POLYBAGS
  - = POLYBAGS PACKAGING WHEN POLARISATION FEATURE APPLICABLE.
  - U = TUBE AVAILABLE FROM 04 TO 25 POS PER ROW.
  - A = TAPE AND REEL WITH PICK UP CAP, AS AVAILABLE
  - K = TAPE AND REEL WITHOUT CAP, AS AVAILABLE.

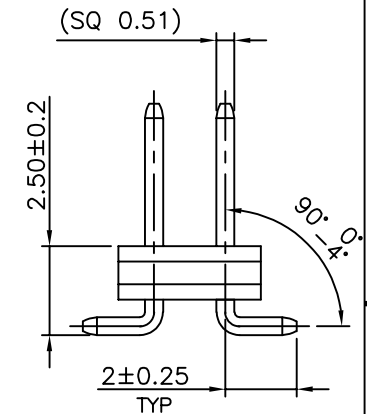
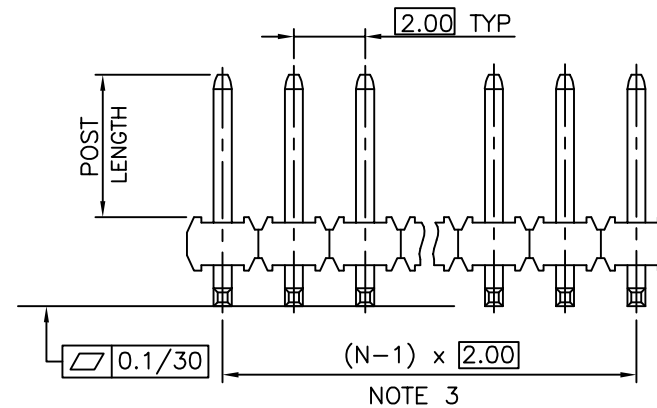
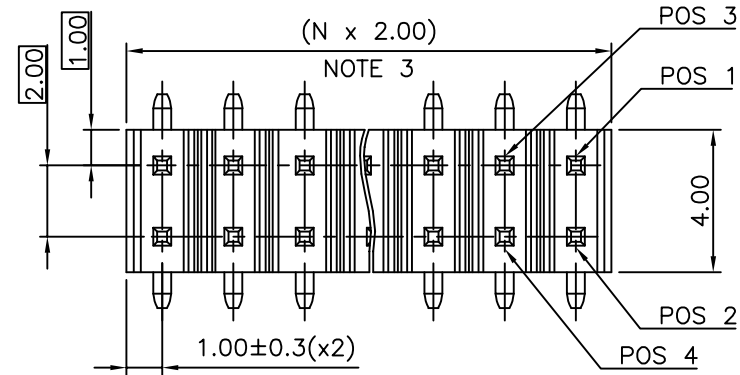
- FOR POLARIZATION, SPECIFY POSITION NUMBER TO OMIT PIN.  
EXAMPLE : 03 = OMIT PIN POSITION 3, SEE TOP VIEW.  
OMIT FROM PRODUCT NUMBER IF THIS FEATURE IS NOT APPLICABLE.

7. RoHS COMPATIBLE PRODUCT SPECIFICATIONS

- PLATING:
  - "LF" MEANS THE PRODUCT IS LEAD-FREE,  
2µm MINIMUM MATTE TIN OVER 1.27µm  
MINIMUM NICKEL UNDERPLATE.
- MANUFACTURING PROCESS COMPATIBILITY
  - THE HOUSING WILL WITHSTAND EXPOSURE TO  
260°C PEAK TEMPERATURE FOR 30 SECONDES  
IN A CONVECTION, INFRA-RED OR VAPOR  
PHASE REFLOW OVEN.
- LABELLING:
  - MEETS PACKAGING SPECS AS PER GS-14-920
- LEGAL STATEMENT : SEE GS-47-0004



TOP VIEW



CAP DIMS FOR 2x3 POS UP TO 2x25 POS		CAP DIMS FOR 2x2 POS	
mat'l. code	surface ISO 1302	tolerance ISO 406 ISO 1101	projection
ltr	ecn no	dr	date
U	F-49168	DDE	23.09.01
V	F-49735	DDE	23.11.10
		angles	linear
		.X	±0.3
		.XX	±0.13
		.XXX	±0.05
P	B-19797	AMA	14.12.16
R	B-19988	LMU	15.01.13
S	B-20032	AMA	15.01.20
T	F-23051	AMA	16.01.15
sheet	revision		
index	sheet		
product family MINITEK		title UNSH HEADER 2.00 mm VERTICAL SMT	
dwg no 57202		sheet 1 of 1 size A3	
type CUSTOMER Drawing			