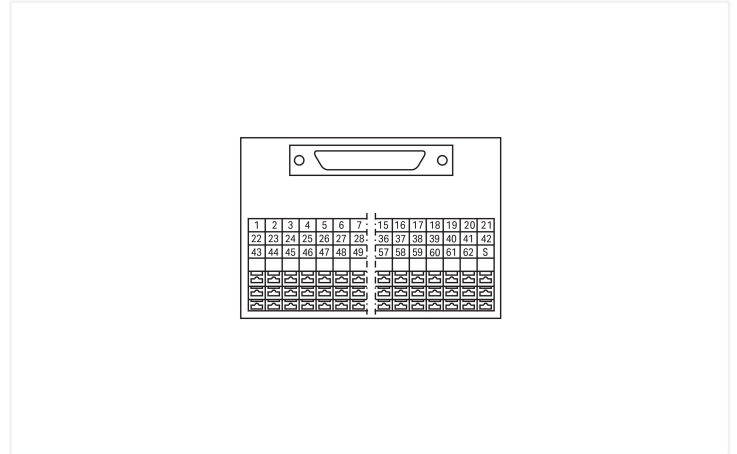
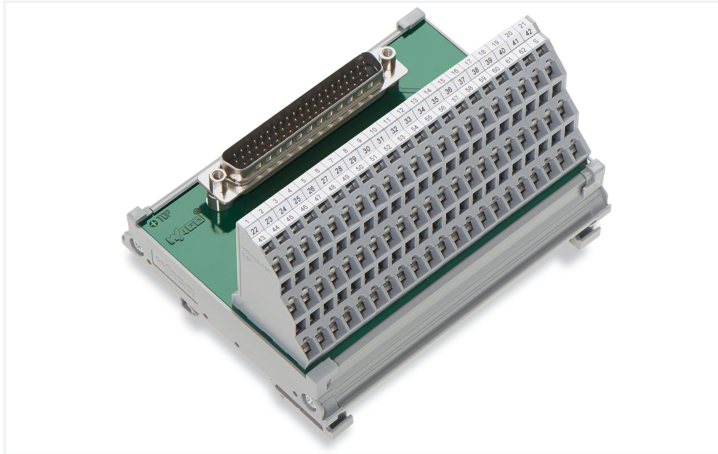


## Data Sheet | Item Number: 289-710

Interface module; HD-Sub-D; Male connector; 62-pole; Triple-deck PCB terminal blocks; in mounting carrier; with shield connection; 2,50 mm<sup>2</sup>

<https://www.wago.com/289-710>



### Electrical data

Operating voltage	≤ 125 VAC/VDC
Nominal current	1 A
Contact resistance (max.)	15 mΩ
Specialty functions	With shield connection

### Safety and protection

Rated Voltage	125 V
Rated impulse withstand voltage	0.8 kV
Pollution degree	2
Protection type	IP20

### Connection Data

Performance level	3 / 50 mating cycles
Strain relief	UNC 4-40 stud bolt

#### Connection 1

Pluggable connector	HD D-sub male connector
Pole number 1	62
Connection type	System
Note (conductor cross-section)	12 AWG: THHN, THWN
Mating direction	vertical

#### Connection 2

Design	PCB terminal blocks (triple-deck)
Pole number	64
Connection type	Field
Connection technology	CAGE CLAMP®
WAGO connector	WAGO 737 Series
Solid conductor	0.08 ... 2.5 mm <sup>2</sup> / 28 ... 12 AWG
Fine-stranded conductor	0.08 ... 2.5 mm <sup>2</sup> / 28 ... 12 AWG
Strip length	5 ... 6 mm / 0.2 ... 0.24 inches

### Physical data

Width	62 mm / 2.441 inches
Height	85 mm / 3.346 inches
Depth from upper-edge of DIN-rail	62 mm / 2.441 inches

### Mechanical data

Mounting type	DIN-35 rail
Housing design	Mounting carrier

### Material data

Contact material (connector)	Au over Ni
Fire load	1.113 MJ
Weight	170.8 g

### Environmental requirements

Ambient temperature (operation)	-20 ... +55 °C
Ambient temperature (storage)	-40 ... +70 °C
Relative humidity	≤ 85 % (non-condensing)

### Standards and Specifications

Standards/specifications	EN 61010-2-201
--------------------------	----------------

### Commercial data

Product Group	6 (INTERFACE ELECTRONIC)
PU (SPU)	4 (1) pcs
Packaging type	Box
Country of origin	DE
GTIN	4017332817202
Customs tariff number	85366990990

### Product Classification

UNSPSC	39121421
eCl@ss 10.0	27-14-11-52
eCl@ss 9.0	27-14-11-52
ETIM 9.0	EC002780
ETIM 10.0	EC002780
ECCN	NO US CLASSIFICATION

### Environmental Product Compliance

RoHS Compliance Status	Compliant, With Exemption
RoHS Exemption	6(c)
SCIP notification number (Austria)	008238af-7e58-409b-a80f-1d465ad920f9
SCIP notification number (Belgium)	41b525f5-0928-4d5d-a4af-da18e543a037
SCIP notification number (Bulgaria)	38839f4f-a31f-407d-8738-c3eeac1a8d87
SCIP notification number (Czech Republic)	e326402f-f3fb-46ab-83ea-aca01d3ebcf3
SCIP notification number (Denmark)	49121548-7b27-48bf-a2e3-e1d6c93e469b
SCIP notification number (Finland)	ce7fd2c5-4a29-4c22-89dd-a6f575590b05
SCIP notification number (France)	f1a581ef-1f7a-4179-8006-d04fa2e77e4a
SCIP notification number (Germany)	220fb34a-b523-4db3-b4d4-22140de252f2
SCIP notification number (Hungary)	c777e863-b321-445b-9d02-4ed2af5b8186

**Environmental Product Compliance**

SCIP notification number (Italy)	eacaaaa2-5393-490b-bcd7-26707cae2c1b
SCIP notification number (Netherlands)	ff6511c9-72db-475f-a6df-3efaf96e36f1
SCIP notification number (Poland)	a9a9a2e8-13f0-45d0-ae91-df17105702ad
SCIP notification number (Romania)	4daef53c-1d5b-4d7a-9a2e-ca477024ae22
SCIP notification number (Sweden)	64e4a169-dbd3-4304-a6da-e0573cfa631

**Approvals / Certificates**

**General approvals**



Approval	Standard	Certificate Name
EAC GZO Almaty Standart	TP TC 004/2011	EAC CoC 03084

**Downloads**

**Environmental Product Compliance**

Compliance Search
Environmental Product Compliance 289-710

**Documentation**

Bid Text			
289-710	19.02.2019	xml 3.58 KB	
289-710	09.02.2015	doc 27.00 KB	

Instruction Leaflet			
Operation and Assembly Instructions Interface	V 1.0.0 02.04.2025	pdf 1246.19 KB	

**CAD/CAE-Data**

CAE data	
EPLAN Data Portal 289-710	
WSCAD Universe 289-710	

## 1 Compatible Products

### 1.1 Optional Accessories

#### 1.1.1 Marking

##### 1.1.1.1 Marking strip



**Item No.: 709-196**

Marking strips; for laser printer; translucent



**Item No.: 709-177**

Marking strips; on reel; 7.5 mm wide; not stretchable; plain; snap-on type; translucent



**Item No.: 709-178**

Marking strips; on reel; 7.5 mm wide; not stretchable; plain; snap-on type; white

### 1.1.2 Tool

#### 1.1.2.1 Operating tool

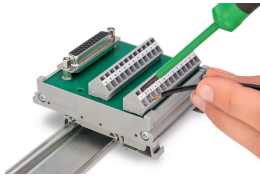


**Item No.: 210-720**

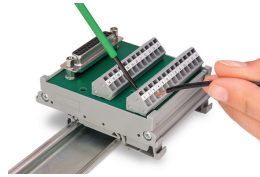
Operating tool; Blade: 3.5 x 0.5 mm; with a partially insulated shaft; multicoloured

## Installation Notes

### Conductor termination

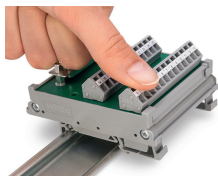


Conductor termination – screwdriver actuation parallel to conductor entry

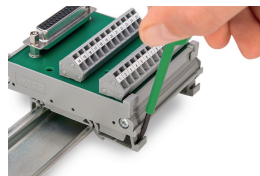


Conductor termination – screwdriver actuation perpendicular to conductor entry

## Installation



Snapping a module onto DIN-rail.



Removing a module from the DIN-rail.