

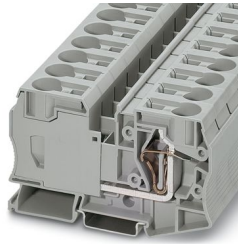
ST 35 - Feed-through terminal block



3036178

<https://www.phoenixcontact.com/us/products/3036178>

Please be informed that the data shown in this PDF document is generated from our online catalog. Please find the complete data in the user documentation. Our general terms of use for downloads are valid.



Feed-through terminal block, nom. voltage: 1000 V, nominal current: 125 A, number of connections: 2, connection method: Spring-cage connection, 1 level, Rated cross section: 35 mm², cross section: 2.5 mm² - 35 mm², mounting type: NS 35/7,5, NS 35/15, color: gray

Your advantages

- The flexible options for reducing bridging in the CLIPLINE complete system can be found in "Accessories for the CLIPLINE complete modular terminal block system"
- The double bridge shaft not only enables individual chain bridging, but also reducing bridging to spring-cage terminal blocks with smaller cross sections

Commercial data

| | |
|--------------------------------------|---------------------|
| Item number | 3036178 |
| Packing unit | 10 pc |
| Minimum order quantity | 10 pc |
| Sales key | BE02 |
| Product key | BE2111 |
| Catalog page | Page 249 (C-1-2019) |
| GTIN | 4017918821043 |
| Weight per piece (including packing) | 84.15 g |
| Weight per piece (excluding packing) | 84.15 g |
| Customs tariff number | 85369010 |
| Country of origin | PL |

ST 35 - Feed-through terminal block



3036178

<https://www.phoenixcontact.com/us/products/3036178>

Technical data

Product properties

| | |
|-----------------------|-----------------------------|
| Product type | Feed-through terminal block |
| Product family | ST |
| Number of connections | 2 |
| Number of rows | 1 |
| Potentials | 1 |

Data management status

| | |
|------------------|----|
| Article revision | 14 |
|------------------|----|

Insulation characteristics

| | |
|----------------------|-----|
| Overvoltage category | III |
| Degree of pollution | 3 |

Electrical properties

| | |
|-------------------------------------------------|--------|
| Rated surge voltage | 8 kV |
| Maximum power dissipation for nominal condition | 4.06 W |

Connection data

| | |
|---------------------------------|--------------------|
| Number of connections per level | 2 |
| Nominal cross section | 35 mm ² |

1 level

| | |
|-------------------------------------------------------------------------------------------|-----------------------------------------------------------------------------------------------------------------------------------------------------------------------------------------------------------------------------------------|
| Stripping length | 25 mm |
| Internal cylindrical gage | A8 |
| Connection in acc. with standard | IEC 60947-7-1 |
| Conductor cross section rigid | 2.5 mm ² ... 35 mm ² |
| Cross section AWG | 12 ... 2 (converted acc. to IEC) |
| Conductor cross section flexible | 2.5 mm ² ... 35 mm ² |
| Conductor cross section, flexible [AWG] | 12 ... 2 (converted acc. to IEC) |
| Conductor cross-section flexible (ferrule without plastic sleeve) | 2.5 mm ² ... 35 mm ² |
| Flexible conductor cross section (ferrule with plastic sleeve) | 2.5 mm ² ... 35 mm ² |
| 2 conductors with the same cross section, flexible, with TWIN ferrule with plastic sleeve | 2.5 mm ² ... 10 mm ² |
| Nominal current | 125 A |
| Maximum load current | 125 A (with 35 mm ² conductor cross section) |
| Nominal voltage | 1000 V |
| Note | The supply from the ST 35 terminal block to the ST 16 TWIN terminal block with the RB-ST 35 reducing bridge is single-sided only. In the case of a central supply, the D-ST 16-TWIN cover cannot be bridged via the reducing bridge. |
| Nominal cross section | 35 mm ² |

ST 35 - Feed-through terminal block



3036178

<https://www.phoenixcontact.com/us/products/3036178>

Ex data

Rated data (ATEX/IECEX)

| | |
|-----------------------------|--------------------------------------|
| Identification | Ⓜ II 2 GD Ex eb IIC Gb |
| Operating temperature range | -60 °C ... 110 °C |
| Ex-certified accessories | 1206612 SZF 3-1,0X5,5 |
| | 3022276 CLIPFIX 35-5 |
| | 3022218 CLIPFIX 35 |
| List of bridges | Plug-in bridge / FBS 2-16 / 3005963 |
| Bridge data | 85.5 A / 35 mm ² |
| Ex temperature increase | 40 K (118.6 A / 35 mm ²) |
| Rated voltage | 690 V |
| for bridging with bridge | 690 V |
| Rated insulation voltage | 630 V |
| output | (Permanent) |

Ex level General

| | |
|----------------------|---------|
| Rated current | 107.5 A |
| Maximum load current | 107.5 A |
| Contact resistance | 0.21 mΩ |

Ex connection data General

| | |
|------------------------------|--------------------------------------------|
| Nominal cross section | 35 mm ² |
| Rated cross section AWG | 2 |
| Connection capacity rigid | 2.5 mm ² ... 35 mm ² |
| Connection capacity AWG | 14 ... 2 |
| Connection capacity flexible | 2.5 mm ² ... 35 mm ² |
| Connection capacity AWG | 14 ... 2 |

Dimensions

| | |
|--------------------|---------|
| Width | 16 mm |
| Height | 100 mm |
| Depth on NS 35/7,5 | 59 mm |
| Depth on NS 35/15 | 66.5 mm |

Material specifications

| | |
|-------------------------------------------------------------------------|-------------|
| Color | gray |
| Flammability rating according to UL 94 | V0 |
| Insulating material group | I |
| Insulating material | PA |
| Static insulating material application in cold | -60 °C |
| Temperature index of insulation material (DIN EN 60216-1 (VDE 0304-21)) | 125 °C |
| Relative insulation material temperature index (Elec., UL 746 B) | 130 °C |
| Fire protection for rail vehicles (DIN EN 45545-2) R22 | HL 1 - HL 3 |

ST 35 - Feed-through terminal block



3036178

<https://www.phoenixcontact.com/us/products/3036178>

| | |
|---------------------------------------------------------|-------------|
| Fire protection for rail vehicles (DIN EN 45545-2) R23 | HL 1 - HL 3 |
| Fire protection for rail vehicles (DIN EN 45545-2) R24 | HL 1 - HL 3 |
| Fire protection for rail vehicles (DIN EN 45545-2) R26 | HL 1 - HL 3 |
| Calorimetric heat release NFPA 130 (ASTM E 1354) | 27,5 MJ/kg |
| Surface flammability NFPA 130 (ASTM E 162) | passed |
| Specific optical density of smoke NFPA 130 (ASTM E 662) | passed |
| Smoke gas toxicity NFPA 130 (SMP 800C) | passed |

Electrical tests

Surge voltage test

| | |
|-----------------------|-------------|
| Test voltage setpoint | 9.8 kV |
| Result | Test passed |

Temperature-rise test

| | |
|-------------------------------------------------|-------------------------------------|
| Requirement temperature-rise test | Increase in temperature ≤ 45 K |
| Result | Test passed |
| Short-time withstand current 35 mm ² | 4.2 kA |
| Result | Test passed |

Power-frequency withstand voltage

| | |
|-----------------------|-------------|
| Test voltage setpoint | 2.2 kV |
| Result | Test passed |

Mechanical properties

Mechanical data

| | |
|-----------------|----|
| Open side panel | No |
|-----------------|----|

Mechanical tests

Mechanical strength

| | |
|--------|-------------|
| Result | Test passed |
|--------|-------------|

Attachment on the carrier

| | |
|-------------------------|-------------|
| DIN rail/fixing support | NS 35 |
| Test force setpoint | 10 N |
| Result | Test passed |

Test for conductor damage and slackening

| | |
|--------------------------------|------------------------------|
| Rotation speed | 10 rpm |
| Revolutions | 135 |
| Conductor cross section/weight | 2.5 mm ² / 0.7 kg |
| | 35 mm ² / 6.8 kg |
| Result | Test passed |

Environmental and real-life conditions

ST 35 - Feed-through terminal block



3036178

<https://www.phoenixcontact.com/us/products/3036178>

Aging

| | |
|--------------------|-------------|
| Temperature cycles | 192 |
| Result | Test passed |

Needle-flame test

| | |
|------------------|-------------|
| Time of exposure | 30 s |
| Result | Test passed |

Oscillation/broadband noise

| | |
|------------------------|------------------------------------------------|
| Specification | DIN EN 50155 (VDE 0115-200):2008-03 |
| Spectrum | Service life test category 2, bogie-mounted |
| Frequency | $f_1 = 5 \text{ Hz}$ to $f_2 = 250 \text{ Hz}$ |
| ASD level | $6.12 \text{ (m/s}^2\text{)}/\text{Hz}$ |
| Acceleration | 3.12g |
| Test duration per axis | 5 h |
| Test directions | X-, Y- and Z-axis |
| Result | Test passed |

Shocks

| | |
|--------------------------------|-------------------------------------|
| Specification | DIN EN 50155 (VDE 0115-200):2008-03 |
| Pulse shape | Half-sine |
| Acceleration | 30g |
| Shock duration | 18 ms |
| Number of shocks per direction | 3 |
| Test directions | X-, Y- and Z-axis (pos. and neg.) |
| Result | Test passed |

Ambient conditions

| | |
|------------------------------------------|------------------------------------------------------------------------------------------------------------------------------|
| Ambient temperature (operation) | -60 °C ... 110 °C (Operating temperature range incl. self-heating; for max. short-term operating temperature, see RTI Elec.) |
| Ambient temperature (storage/transport) | -25 °C ... 60 °C (for a short time, no longer than 24 h, -60°C to +70°C) |
| Ambient temperature (assembly) | -5 °C ... 70 °C |
| Ambient temperature (actuation) | -5 °C ... 70 °C |
| Permissible humidity (operation) | 20 % ... 90 % |
| Permissible humidity (storage/transport) | 30 % ... 70 % |

Standards and regulations

| | |
|----------------------------------|---------------|
| Connection in acc. with standard | IEC 60947-7-1 |
|----------------------------------|---------------|

Mounting

| | |
|---------------|-----------|
| Mounting type | NS 35/7,5 |
| | NS 35/15 |

ST 35 - Feed-through terminal block

3036178

<https://www.phoenixcontact.com/us/products/3036178>



Drawings

Circuit diagram



ST 35 - Feed-through terminal block





3036178


<https://www.phoenixcontact.com/us/products/3036178>


Approvals

To download certificates, visit the product detail page: <https://www.phoenixcontact.com/us/products/3036178>


|  CSA Approval ID: 13631 | | | | |
|--------------------------------------------------------------------------------------------------------------------|-----------------------|-----------------------|-------------------|----------------------|
| | Nominal voltage U_N | Nominal current I_N | Cross section AWG | Cross section mm^2 |
| Use group B | 600 V | 115 A | 14 - 2 | - |
| Use group C | 600 V | 115 A | 14 - 2 | - |


|  IECEE CB Scheme Approval ID: DE1-62909 | | | | |
|------------------------------------------------------------------------------------------------------------------------------------|--|--|--|--|
|------------------------------------------------------------------------------------------------------------------------------------|--|--|--|--|

|  KR Approval ID: HMB17372-EL002 | | | | |
|------------------------------------------------------------------------------------------------------------------------------|--|--|--|--|
|------------------------------------------------------------------------------------------------------------------------------|--|--|--|--|

|  NK Approval ID: 09 ME 140 | | | | |
|-------------------------------------------------------------------------------------------------------------------------|--|--|--|--|
|-------------------------------------------------------------------------------------------------------------------------|--|--|--|--|

|  BV Approval ID: 13403/D0 BV | | | | |
|---------------------------------------------------------------------------------------------------------------------------|--|--|--|--|
|---------------------------------------------------------------------------------------------------------------------------|--|--|--|--|

|  cULus Recognized Approval ID: E60425 | | | | |
|------------------------------------------------------------------------------------------------------------------------------------|-----------------------|-----------------------|-------------------|----------------------|
| | Nominal voltage U_N | Nominal current I_N | Cross section AWG | Cross section mm^2 |
| Use group B | 600 V | 115 A | 14 - 2 | - |
| Use group C | 600 V | 115 A | 14 - 2 | - |

|  ATEX Approval ID: KEMA01ATEX2260U | | | | |
|---------------------------------------------------------------------------------------------------------------------------------|-----------------------|-----------------------|-------------------|----------------------|
| | Nominal voltage U_N | Nominal current I_N | Cross section AWG | Cross section mm^2 |
| Type examination certificate | 690 V | 107.5 A | - | 2.5 - 35 |

|  EAC Ex Approval ID: RU C-DE.HA91.B.00066 | | | | |
|----------------------------------------------------------------------------------------------------------------------------------------|--|--|--|--|
|----------------------------------------------------------------------------------------------------------------------------------------|--|--|--|--|

ST 35 - Feed-through terminal block



3036178

<https://www.phoenixcontact.com/us/products/3036178>



IECEX

Approval ID: IECEX KEM 06.0033U

| | Nominal voltage U_N | Nominal current I_N | Cross section AWG | Cross section mm^2 |
|--|-----------------------|-----------------------|-------------------|-----------------------------|
| | 690 V | 107.5 A | - | 2.5 - 35 |



CCC

Approval ID: 2020322313000621



UKCA-EX

Approval ID: DEKRA 21UKEX0303U

ST 35 - Feed-through terminal block



3036178

<https://www.phoenixcontact.com/us/products/3036178>

Classifications

ECLASS

| | |
|-------------|----------|
| ECLASS-11.0 | 27141120 |
| ECLASS-13.0 | 27250101 |

ETIM

| | |
|----------|----------|
| ETIM 9.0 | EC000897 |
|----------|----------|

UNSPSC

| | |
|-------------|----------|
| UNSPSC 21.0 | 39121400 |
|-------------|----------|

ST 35 - Feed-through terminal block



3036178

<https://www.phoenixcontact.com/us/products/3036178>

Environmental product compliance

EU RoHS

| | |
|-----------------------------------------|--------------------|
| Fulfills EU RoHS substance requirements | Yes, No exemptions |
|-----------------------------------------|--------------------|

China RoHS

| | |
|----------------------------------------|------------------------------------------|
| Environment friendly use period (EFUP) | EFUP-E |
| | No hazardous substances above the limits |

EU REACH SVHC

| | |
|-------------------------------------|----------------------------|
| REACH candidate substance (CAS No.) | No substance above 0.1 wt% |
|-------------------------------------|----------------------------|

EF3.0 Climate Change


| | |
|---------|---------------|
| CO2e kg | 0.394 kg CO2e |
|---------|---------------|

ST 35 - Feed-through terminal block

3036178

<https://www.phoenixcontact.com/us/products/3036178>

Accessories

 Note: Applying some accessories below might limit this product.


FBS 2-16 - Plug-in bridge

3005963

<https://www.phoenixcontact.com/us/products/3005963>



Plug-in bridge, pitch: 16 mm, number of positions: 2, length: 44 mm, color: red

 Max. current carrying capacity: 101 A

RB ST 35-(2,5/4) - Reducing bridge

3030899

<https://www.phoenixcontact.com/us/products/3030899>



Reducing bridge, pitch: 11 mm, number of positions: 2, color: red

 Max. current carrying capacity: 35 A

ST 35 - Feed-through terminal block

3036178

<https://www.phoenixcontact.com/us/products/3036178>



RB 35-16 - Reducing bridge

3032169

<https://www.phoenixcontact.com/us/products/3032169>



Reducing bridge, pitch: 14 mm, number of positions: 2, color: red

 Max. current carrying capacity: 90 A

PAI-ST 35/1000MM - Test adapter

3029994

<https://www.phoenixcontact.com/us/products/3029994>



Test adapter, number of positions: 1, color: red

ST 35 - Feed-through terminal block

3036178

<https://www.phoenixcontact.com/us/products/3036178>



LPS-16/E - Service connector

3270620

<https://www.phoenixcontact.com/us/products/3270620>



Service connector, nom. voltage: 800 V, nominal current: 24 A, connection method: Push-in connection, Rated cross section: 2.5 mm², cross section: 0.14 mm²- 4 mm², color: red

LPS-16 - Service connector

3270621

<https://www.phoenixcontact.com/us/products/3270621>



Service connector, nom. voltage: 800 V, nominal current: 24 A, number of positions: 1, connection method: Push-in connection, Rated cross section: 2.5 mm², cross section: 0.14 mm²- 4 mm², color: red

ST 35 - Feed-through terminal block

3036178

<https://www.phoenixcontact.com/us/products/3036178>



LPO 35/E - Pick-off plug

3270542

<https://www.phoenixcontact.com/us/products/3270542>



Pick-off plug, nom. voltage: 800 V, nominal current: 24 A, number of positions: 1, connection method: Push-in connection, Rated cross section: 2.5 mm², cross section: 0.14 mm²- 4 mm², color: gray

LPO 35 - Pick-off plug

3270543

<https://www.phoenixcontact.com/us/products/3270543>



Pick-off plug, nom. voltage: 800 V, nominal current: 24 A, number of positions: 1, connection method: Push-in connection, Rated cross section: 2.5 mm², cross section: 0.14 mm²- 4 mm², color: gray

ST 35 - Feed-through terminal block

3036178

<https://www.phoenixcontact.com/us/products/3036178>



NS 35/ 7,5 PERF 2000MM - DIN rail perforated

0801733

<https://www.phoenixcontact.com/us/products/0801733>



DIN rail perforated, Pack of 25 (50 m), acc. to EN 60715, material: Steel, galvanized, passivated with a thick layer, Standard profile, color: silver

NS 35/ 7,5 UNPERF 2000MM - DIN rail, unperforated

0801681

<https://www.phoenixcontact.com/us/products/0801681>



DIN rail, unperforated, Pack of 25 (50 m), acc. to EN 60715, material: Steel, galvanized, passivated with a thick layer, Standard profile, color: silver

ST 35 - Feed-through terminal block

3036178

<https://www.phoenixcontact.com/us/products/3036178>



NS 35/ 7,5 WH PERF 2000MM - DIN rail perforated

1204119

<https://www.phoenixcontact.com/us/products/1204119>



DIN rail perforated, Pack of 25 (50 m), acc. to EN 60715, material: Steel, Galvanized, white passivated, Standard profile, color: silver

NS 35/ 7,5 WH UNPERF 2000MM-VPE 10 - DIN rail, unperforated

1204122

<https://www.phoenixcontact.com/us/products/1204122>



DIN rail, unperforated, Pack of 10 (20 m), acc. to EN 60715, material: Steel, Galvanized, white passivated, Standard profile, color: silver

ST 35 - Feed-through terminal block

3036178

<https://www.phoenixcontact.com/us/products/3036178>



NS 35/ 7,5 AL UNPERF 2000MM - DIN rail, unperforated

0801704

<https://www.phoenixcontact.com/us/products/0801704>



DIN rail, unperforated, Pack of 25 (50 m), acc. to EN 60715, material: Aluminum, uncoated, Standard profile, color: silver

NS 35/ 7,5 ZN PERF 2000MM - DIN rail perforated

1206421

<https://www.phoenixcontact.com/us/products/1206421>



DIN rail perforated, Pack of 25 (50 m), acc. to EN 60715, material: Steel, galvanized, Standard profile, color: silver

ST 35 - Feed-through terminal block

3036178

<https://www.phoenixcontact.com/us/products/3036178>



NS 35/ 7,5 ZN UNPERF 2000MM - DIN rail, unperforated

1206434

<https://www.phoenixcontact.com/us/products/1206434>



DIN rail, unperforated, Pack of 25 (50 m), acc. to EN 60715, material: Steel, galvanized, Standard profile, color: silver

NS 35/ 7,5 CU UNPERF 2000MM-VPE 10 - DIN rail, unperforated

0801762

<https://www.phoenixcontact.com/us/products/0801762>



DIN rail, unperforated, Pack of 10 (20 m), acc. to EN 60715, material: Copper, uncoated, Standard profile, color: copper-colored

ST 35 - Feed-through terminal block

3036178

<https://www.phoenixcontact.com/us/products/3036178>



NS 35/ 7,5 CAP - End cap

1206560

<https://www.phoenixcontact.com/us/products/1206560>

DIN rail end piece, for DIN rail NS 35/7.5



ZB 16:UNPRINTED - Zack marker strip

0827461

<https://www.phoenixcontact.com/us/products/0827461>



Zack marker strip, Strip, white, unlabeled, can be labeled with: PLOTMARK, CMS-P1-PLOTTER, mounting type: snapped, for terminal block width: 16 mm, lettering field size: 16 x 10.5 mm, Number of individual labels: 50

ST 35 - Feed-through terminal block

3036178

<https://www.phoenixcontact.com/us/products/3036178>



ZB 16 CUS - Zack marker strip

0827463

<https://www.phoenixcontact.com/us/products/0827463>



Zack marker strip, can be ordered: Strip, white, labeled according to customer specifications, mounting type: snap into tall marker groove, for terminal block width: 16 mm, lettering field size: 10.5 x 16 mm, Number of individual labels: 5

ZB 16,LGS:L1-N,PE - Zack marker strip

0827462

<https://www.phoenixcontact.com/us/products/0827462>



Zack marker strip, Strip, white, labeled, printed horizontally: L1, L2, L3, N, PE, mounting type: snapped, for terminal block width: 16.3 mm, lettering field size: 10.5 x 16.25 mm, Number of individual labels: 5

ST 35 - Feed-through terminal block

3036178

<https://www.phoenixcontact.com/us/products/3036178>



UC-TM 16 - Marker for terminal blocks

0819217

<https://www.phoenixcontact.com/us/products/0819217>



Marker for terminal blocks, Sheet, white, unlabeled, can be labeled with: BLUEMARK ID COLOR, BLUEMARK ID, BLUEMARK CLED, PLOTMARK, CMS-P1-PLOTTER, mounting type: snapped, for terminal block width: 16 mm, lettering field size: 15.45 x 10.5 mm, Number of individual labels: 32

UC-TM 16 CUS - Marker for terminal blocks

0824621

<https://www.phoenixcontact.com/us/products/0824621>



Marker for terminal blocks, can be ordered: by sheet, white, labeled according to customer specifications, mounting type: snap into tall marker groove, for terminal block width: 16 mm, lettering field size: 15.45 x 10.5 mm, Number of individual labels: 32

ST 35 - Feed-through terminal block

3036178

<https://www.phoenixcontact.com/us/products/3036178>



UCT-TM 16 - Marker for terminal blocks

0829146

<https://www.phoenixcontact.com/us/products/0829146>



Marker for terminal blocks, Sheet, white, unlabeled, can be labeled with: TOPMARK NEO, TOPMARK LASER, BLUEMARK ID COLOR, BLUEMARK ID, BLUEMARK CLED, THERMOMARK PRIME, THERMOMARK CARD 2.0, THERMOMARK CARD, mounting type: snapped, for terminal block width: 16 mm, lettering field size: 14.8 x 9.6 mm, Number of individual labels: 18

UCT-TM 16 CUS - Marker for terminal blocks

0829637

<https://www.phoenixcontact.com/us/products/0829637>



Marker for terminal blocks, can be ordered: by sheet, white, labeled according to customer specifications, mounting type: snap into tall marker groove, for terminal block width: 16 mm, lettering field size: 14.8 x 9.6 mm, Number of individual labels: 18

ST 35 - Feed-through terminal block

3036178

<https://www.phoenixcontact.com/us/products/3036178>



ZBF 16:UNPRINTED - Zack Marker strip, flat

0827464

<https://www.phoenixcontact.com/us/products/0827464>



Zack Marker strip, flat, Strip, white, unlabeled, can be labeled with: PLOTMARK, CMS-P1-PLOTTER, mounting type: snapped, for terminal block width: 16 mm, lettering field size: 16.25 x 10.5 mm, Number of individual labels: 50

ZBF 16 CUS - Zack Marker strip, flat

0827465

<https://www.phoenixcontact.com/us/products/0827465>



Zack Marker strip, flat, can be ordered: Strip, white, labeled according to customer specifications, mounting type: snap into flat marker groove, for terminal block width: 16 mm, lettering field size: 5.15 x 16 mm, Number of individual labels: 5

ST 35 - Feed-through terminal block

3036178

<https://www.phoenixcontact.com/us/products/3036178>



UC-TMF 16 - Marker for terminal blocks

0819262

<https://www.phoenixcontact.com/us/products/0819262>



Marker for terminal blocks, Sheet, white, unlabeled, can be labeled with: BLUEMARK ID COLOR, BLUEMARK ID, BLUEMARK CLED, PLOTMARK, CMS-P1-PLOTTER, mounting type: snapped, for terminal block width: 16 mm, lettering field size: 15.45 x 5.1 mm, Number of individual labels: 32

UC-TMF 16 CUS - Marker for terminal blocks

0824678

<https://www.phoenixcontact.com/us/products/0824678>



Marker for terminal blocks, can be ordered: by sheet, white, labeled according to customer specifications, mounting type: snap into flat marker groove, for terminal block width: 16 mm, lettering field size: 15.45 x 5.1 mm, Number of individual labels: 32

ST 35 - Feed-through terminal block

3036178

<https://www.phoenixcontact.com/us/products/3036178>



UCT-TMF 16 - Marker for terminal blocks

0829218

<https://www.phoenixcontact.com/us/products/0829218>



Marker for terminal blocks, Sheet, white, unlabeled, can be labeled with: TOPMARK NEO, TOPMARK LASER, BLUEMARK ID COLOR, BLUEMARK ID, BLUEMARK CLED, THERMOMARK PRIME, THERMOMARK CARD 2.0, THERMOMARK CARD, mounting type: snapped, for terminal block width: 16 mm, lettering field size: 15.2 x 4.7 mm, Number of individual labels: 24

UCT-TMF 16 CUS - Marker for terminal blocks

0829693

<https://www.phoenixcontact.com/us/products/0829693>



Marker for terminal blocks, can be ordered: by sheet, white, labeled according to customer specifications, mounting type: snap into flat marker groove, for terminal block width: 16 mm, lettering field size: 15.2 x 4.7 mm, Number of individual labels: 24

ST 35 - Feed-through terminal block

3036178

<https://www.phoenixcontact.com/us/products/3036178>



MPS-MT - Test plug

0201744

<https://www.phoenixcontact.com/us/products/0201744>



Test plug, with solder connection up to 1 mm² conductor cross section, number of positions: 1, color: gray

MPS-IH WH - Insulating sleeve

0201663

<https://www.phoenixcontact.com/us/products/0201663>

Insulating sleeve, color: white



ST 35 - Feed-through terminal block

3036178

<https://www.phoenixcontact.com/us/products/3036178>



MPS-IH RD - Insulating sleeve

0201676

<https://www.phoenixcontact.com/us/products/0201676>

Insulating sleeve, color: red

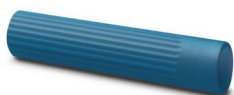


MPS-IH BU - Insulating sleeve

0201689

<https://www.phoenixcontact.com/us/products/0201689>

Insulating sleeve, color: blue



ST 35 - Feed-through terminal block

3036178

<https://www.phoenixcontact.com/us/products/3036178>



MPS-IH YE - Insulating sleeve

0201692

<https://www.phoenixcontact.com/us/products/0201692>

Insulating sleeve, color: yellow



MPS-IH GN - Insulating sleeve

0201702

<https://www.phoenixcontact.com/us/products/0201702>

Insulating sleeve, color: green



ST 35 - Feed-through terminal block

3036178

<https://www.phoenixcontact.com/us/products/3036178>



MPS-IH GY - Insulating sleeve

0201728

<https://www.phoenixcontact.com/us/products/0201728>

Insulating sleeve, color: gray



MPS-IH BK - Insulating sleeve

0201731

<https://www.phoenixcontact.com/us/products/0201731>

Insulating sleeve, color: black



ST 35 - Feed-through terminal block

3036178

<https://www.phoenixcontact.com/us/products/3036178>



SZF 3-1,0X5,5 - Screwdriver

1206612

<https://www.phoenixcontact.com/us/products/1206612>



Actuation tool, for ST terminal blocks, also suitable for use as a bladed screwdriver, size: 1.0 x 5.5 x 150 mm, 2-component grip, with non-slip grip

PROJECT COMPLETE - Software

1050453

<https://www.phoenixcontact.com/us/products/1050453>



Intuitive planning and marking software for configuring terminal strips and for professional marking of marking materials for terminal blocks, conductors, cables, devices, and systems. The software is available for download

Phoenix Contact 2024 © - all rights reserved
<https://www.phoenixcontact.com>

Phoenix Contact USA
586 Fulling Mill Road
Middletown, PA 17057, United States
(+717) 944-1300
info@phoenixcon.com