



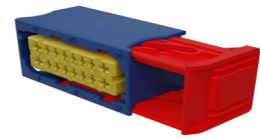
**Part Number :** [982731003](#)

**Product Description :** 3.33mm / 6.00mm Pitch  
Hybrid Inline Female Housing, Right Slide Orientation,  
Dual Row, 16 Circuits, Blue

**Series Number :** 98273

**Status :** Active

**Product Category :** Connector Housings



---

## Documents & Resources

### Drawings

[982731003\\_sd.pdf](#)

### 3D Models and Design Files

[STEP AP242](#)

[SOLIDWORKS](#)

[Creo](#)

### Specifications

[AS-98273-001-001.pdf](#)

[PK-98273-001-001.pdf](#)

---

## Product Environment Compliance

### Compliance

GADSL/IMDS	Duty-To-Declare
China RoHS	Not Relevant
EU ELV	Compliant per 2000/53/EC
Low-Halogen Status	Low-Halogen per IEC 61249-2-21
REACH SVHC	Not Contained per D(2023)3788-DC (14 Jun 2023)
EU RoHS	Compliant per EU 2015/863

### Compliance Statements

- EU RoHS
- REACH SVHC
- Low-Halogen

## Industry Documents

- IPC 1752A Class C
- IPC 1752A Class D
- Molex Product Compliance Declaration
- IEC-62474
- chemSHERPA (xml)

## Substances of Interest

- PFAS

## EU RoHS Certificate of Compliance

## Additional Product Compliance Information

---

## Part Details

### General

Status	Active
Category	Connector Housings
Series	98273
Description	3.33mm / 6.00mm Pitch Hybrid Inline Female Housing, Right Slide Orientation, Dual Row, 16 Circuits, Blue
Application	Power, Wire-to-Wire
Comments	7 Amps max @85°C for NSCC terminal 98897 with 2.00 mm <sup>2</sup> wire or 15 Amps max @85°C for UCC terminal 98898 with 4.00 mm <sup>2</sup> wire
Product Name	NSCC
UPC	822348213146

### Physical

Circuits Detail	4x2.8mm 12x1.5mm female terminals
Circuits (maximum)	16
Color - Resin	Natural, Natural (White)
Gender	Receptacle
Glow-Wire Capable	No
Lock to Mating Part	Yes
Material - Resin	Polyester, Polyester Alloy
Net Weight	18.516/g

Number of Rows	2
Packaging Type	Bag
Panel Mount	No
Pitch - Mating Interface	3.33mm, 6.00mm
Polarized to Mating Part	Yes
Ports	1
Stackable	No
Temperature Range - Operating	-40° to +85°C

## Solder Process Data

Lead-Free Process Capability	N/A
------------------------------	-----

---

## Mates With / Use With

### Mates with Part(s)

Description	Part Number
3.33mm / 6.00mm Pitch Hybrid Male Inline Housing, Dual Row, 16 Circuits, Blue	<u>982761003</u>

### Use with Part(s)

Description	Part Number
NSCC Receptacle Terminals Size 1.5	<u>98897</u>
5.00mm Pitch UCC2 Receptacle Terminals	<u>98898</u>

---

This document was generated on Sep 18, 2025