



Part Number : [03091151](#)

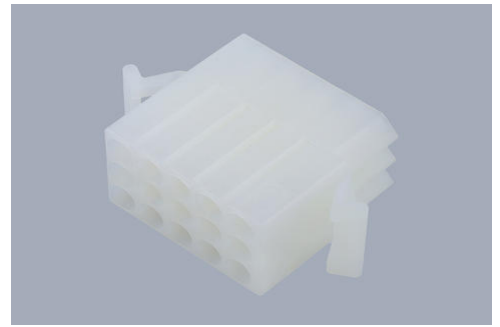
Product Description : 2.36mm Diameter Standard .093" Pin and Socket Receptacle Housing, 15 Circuits, 3 Rows, with Pre-Bent Mounting Ears, without Lock Ramps

Series Number : 1375

Status : Active

Product Category : Connector Housings

Engineering Part Number : 1375-R



Documents and Resources

Drawings

[003091151_sd.pdf](#)

3D Models and Design Files

[STEP AP242](#)

[SOLIDWORKS](#)

[Creo](#)

Specifications

[PK-1375-001-001.pdf](#)

[PS-02-09-001.pdf](#)


[PS-1375-001-001.pdf](#)

[PS-1375-002-001.pdf](#)

[PS-42477-001.pdf](#)

Product Environment Compliance

Compliance

GADSL/IMDS	Not Relevant
China RoHS	 per SJ/T 11365-2006
EU ELV	Not Relevant
Low-Halogen Status	Low-Halogen per IEC 61249-2-21
REACH SVHC	Not Contained per D(2025)7771-DC (04 Feb 2026)

EU RoHS	Compliant per EU 2015/863
---------	---------------------------

Compliance Statements

- EU RoHS
- REACH SVHC
- Low-Halogen

Industry Documents

- IPC 1752A Class C
- IPC 1752A Class D
- Molex Product Compliance Declaration
- IEC-62474
- chemSHERPA (xml)

Substances of Interest

- PFAS

EU RoHS Certificate of Compliance

Additional Product Compliance Information

Part Details

General

Status	Active
Category	Connector Housings
Series	1375
Description	2.36mm Diameter Standard .093" Pin and Socket Receptacle Housing, 15 Circuits, 3 Rows, with Pre-Bent Mounting Ears, without Lock Ramps
Application	Power, Wire-to-Wire
Comments	12.5A max. can be achieved when housing is used with 42477 or 42478 terminals
Product Name	Standard .093"
UPC	800753614758

Agency

CSA	LR19980
UL	E29179

Physical

Circuits (maximum)	15
Color - Resin	Natural
Flammability	94V-2
Gender	Receptacle
Glow-Wire Capable	No
Lock to Mating Part	No
Material - Resin	Nylon
Net Weight	6.914/g
Number of Rows	3
Packaging Type	Bag
Panel Mount	Yes
Pitch - Mating Interface	5.03mm
Pitch - Termination Interface	5.03mm
Stackable	No
Temperature Range - Operating	-40° to +105°C

Solder Process Data

Lead-Free Process Capability	N/A
------------------------------	-----

Mates With / Use With

Mates with Part(s)

Description	Part Number
2.36mm Diameter Standard .093" Pin and Socket Plug Housing, 15 Circuits, 3 Rows, without Mounting Ears, with Pull Tabs, without Lock Windows	<u>03092151</u>
Standard .093" Pin and Socket Vertical Headers	<u>3099</u>

Use with Part(s)

Description	Part Number
Standard .093" Pin and Socket Female Crimp Terminals	<u>1189</u>

Standard .093" Pin and Socket Male Crimp Terminals	<u>1190</u>
Standard .093" Pin and Socket Male Crimp Terminals	<u>1380</u>
Standard .093" Pin and Socket Female Crimp Terminals	<u>1381</u>
Standard .093" Pin and Socket Male Crimp Terminal	<u>1434</u>
Standard .093" Pin and Socket Male Crimp Grounding Terminals	<u>1973</u>

This document was generated on Apr 21, 2026