



**Part Number :** [190040009](#)

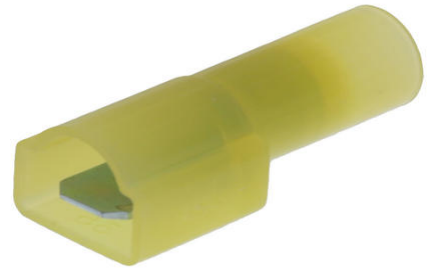
**Product Description :** InsulKrimp Fully Insulated Coupler, Male, for 12-10 AWG Wire, Box, Carton

**Series Number :** 19004

**Status :** Active

**Product Category :** Quick Disconnects

**Engineering Part Number :** C-2264



---

## Documents and Resources

### Drawings

[190040009\\_sd.pdf](#)

### 3D Models and Design Files

[STEP AP242](#)

[SOLIDWORKS](#)

[Creo](#)

### Specifications


[PS-19902-008-001.pdf](#)

[PS-19902-013-001.pdf](#)

---

## Product Environment Compliance

### Compliance

GADSL/IMDS	Not Relevant
China RoHS	 per SJ/T 11365-2006
EU ELV	Not Relevant
Low-Halogen Status	Low-Halogen per IEC 61249-2-21
REACH SVHC	Contains Melamine per D(2025)7771-DC (04 Feb 2026)
EU RoHS	Compliant per EU 2015/863

### Compliance Statements

- EU RoHS
- REACH SVHC

- Low-Halogen

#### Industry Documents

- IPC 1752A Class C
- IPC 1752A Class D
- Molex Product Compliance Declaration
- IEC-62474
- chemSHERPA (xml)

#### Substances of Interest

- PFAS

#### EU RoHS Certificate of Compliance

#### Additional Product Compliance Information

---

## Part Details

### General

Status	Active
Category	Quick Disconnects
Series	19004
Description	InsulKrimp Fully Insulated Coupler, Male, for 12-10 AWG Wire, Box, Carton
Product Name	InsulKrimp
Type	Standard Quick Disconnect
UPC	800753030138

### Agency

CSA	LR18689
UL	E79133

### Electrical

Voltage - Maximum	600V
-------------------	------

### Physical

Barrel Type	Closed
Color - Resin	Yellow
Flammability	94V-2
Gender	Male

Glow-Wire Capable	No
Insulated	Fully
Insulation	Nylon (PA)
Lock to Mating Part	No
Material - Metal	Brass
Material - Plating Mating	Zinc Chromate
Material - Plating Termination	Zinc Chromate
Material - Resin	Nylon
Net Weight	1.978/g
Orientation	Straight
Packaging Type	Carton
Polarized to Mating Part	No
Tab Thickness	0.81mm
Tab Width	6.35mm
Temperature Range - Operating	-65° to +105°C
Wire Insulation Diameter	6.99mm max.
Wire Size (AWG)	10, 12

### Solder Process Data

Lead-Free Process Capability	N/A
------------------------------	-----

### Mates With / Use With

#### Use with Part(s)

Description	Part Number
InsulKrimp Fully Insulated Coupler, Female, for 12-10 AWG Wire, Box, Carton	<u>190050010</u>
InsulKrimp Fully Insulated Coupler, Female, for 12-10 AWG Wire, Continuous Molded Strip	<u>190050014</u>
InsulKrimp Fully Insulated Coupler, Female, for 12-10 AWG Wire, Mylar Tape	<u>190050015</u>

---

### Application Tooling

## Global

Description	Part Number
Hand Crimp Tool	<u>640015100</u>
Crimp Head for the AT-200 Pneumatic Hand Tool	<u>640055100</u>

---

This document was generated on May 13, 2026