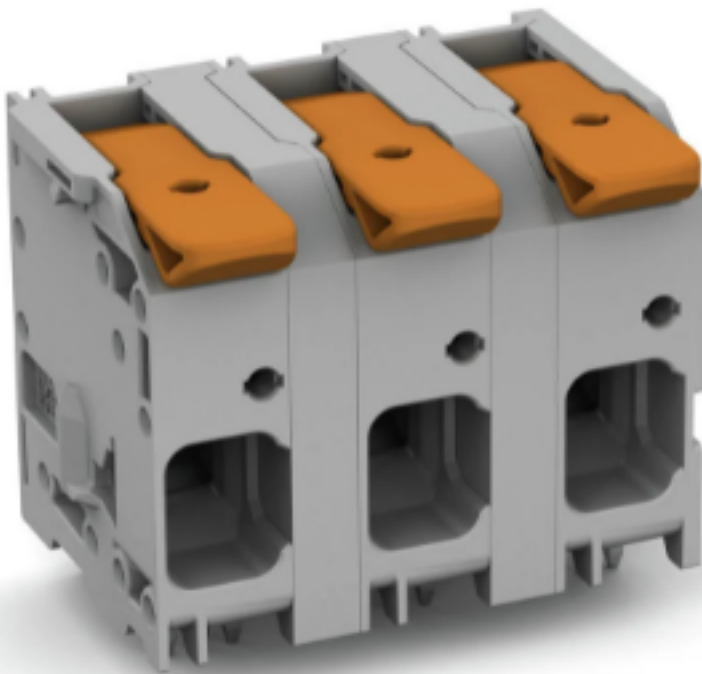



Item no. 2616-1352

PCB terminal block; Push-in CAGE CLAMP with operating lever; AWG 18 - 4; Pin spacing 15 mm; double pinning; 2-pole; side entry; gray

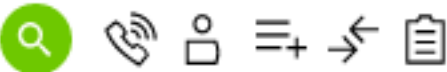


Visit our local site for more information and offerings for your country:

 /global/



- PRODUCTS
- INDUSTRIES
- SOLUTIONS
- WHERE TO BUY
- WAGO
- SUPPORT
- DOWNLOADS
- CAREERS



- PCB terminal blocks with levers and Push-in CAGE CLAMP® connection
- Push-in termination of solid and ferruled conductors

Read more ▾

Details

Downloads

Approval

Related products

Knowledge/FAQ

Service


Environmental Product Compliance

Documentation

CAD files

> United States (EN)

> We are happy to help!

 1-800-DIN-RAIL (346-7245)

[Cookie Settings](#)

[Contact](#)

[Careers](#)

[Imprint](#)

[Privacy](#)

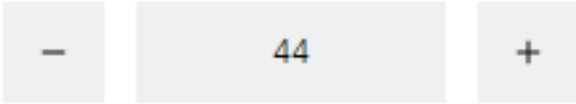
[Terms and Conditions](#)


Item no. 2616-1352

**PCB terminal block**

Price and availability after [Login](#)

PU (SPU): 44 Piece



 Add to shopping list



Buy via Distributor  
eShop