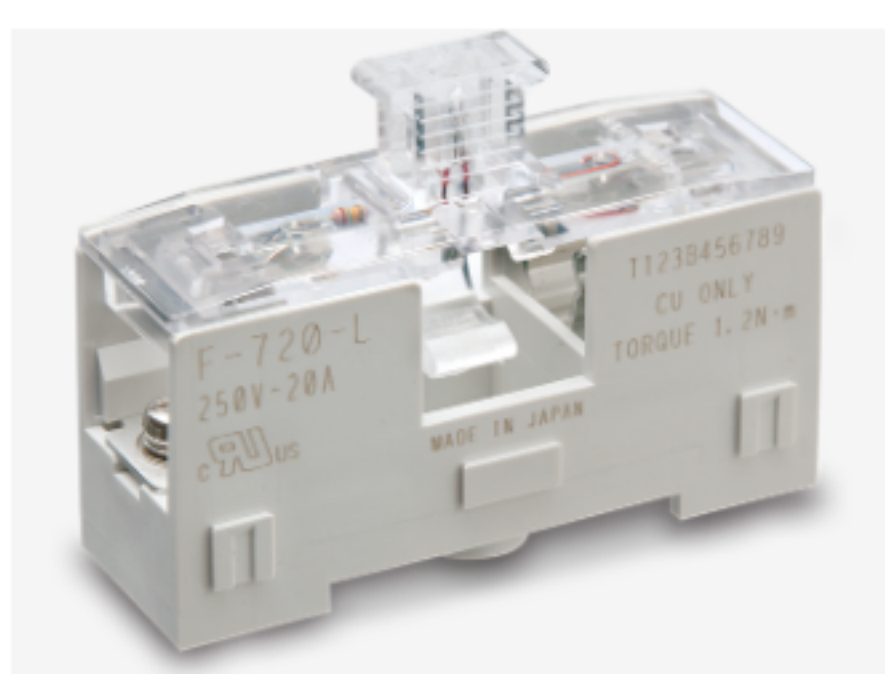


[Product mass](#)
[Precautions for use](#)
[General notes](#)

## F-720-L made in JAPAN


[Horizontal installation type](#)
[Joint side by side](#)
[Fuse blow indicator light](#)
[DIN rail mounting](#)
**E101405**

### Order model number

Order model number F-720-L

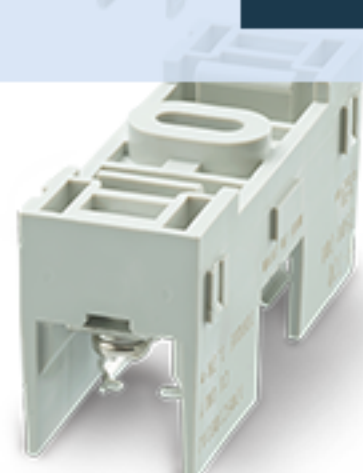
Order example F-720-L

[Basic information](#)
[Dimension](#)
[Optional](#)
[Conformity product / Mate product](#)
[Download](#)

## Detent (F-1000-S1) mounting example

When installing with 1P, it can be installed so that the main body does not rotate.

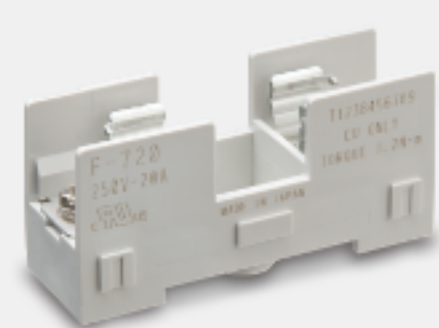
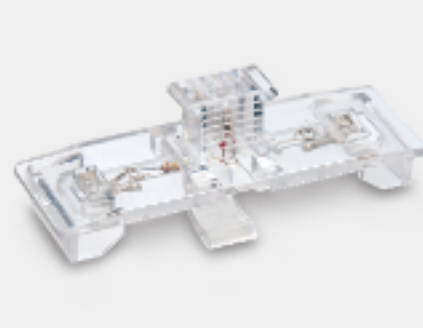
[Add to My List](#) >

[Sample request \(Only available in Japan\)](#) >


## Basic information

Rating	250V-20A
Insulation resistance	DC500V、100MΩ Min
Withstand voltage	AC2000V (1minute)
Certificates & Approvals	UL・CSA(C-UL)
Main insulator	PBT (UL94V-0)
Terminal type	M4×8 Screw with washer
Terminal screw torque	1.2N・m
Body color	W (White)
Installation screw torque	1.0N・m : When using M4 screws and plain washers.
Installation	Screw or DIN Rail (Top hut type 35mm width)
*Neon lamp spec.	
*Working voltage	AC100V-250V
*Protector Resistance (installed)	150kΩ、1/4W
*Discharge Start Voltage	AC75V Max
*Discharge Current	100V : Approximately 0.3mA、200V : Approximately 0.96mA、250V : Approximately 1.3mA
*Neon Lamp Life	100V : Approximately 60,000hours (continuously)、200V : Approximately 30,000hours (continuously)、250V : Approximately 20,000hours (continuously)
Overview	1.Carrier with fusing indication. 2.Any number of pole joint side by side.
Note	

## Related products

[F-720](#)

[F-720](#)
[Add to My List](#)
[F-720-FCL](#)

[F-720-FCL](#)
[Add to My List](#)
[Home](#)
[Product search](#)
[Product Category](#)
[About SATO PARTS](#)
[News classification](#)
[Contact us](#)
[Video channel](#)
[Download brochure](#)
[Environmental initiatives](#)
[Privacy policy](#)
[Cookie policy](#)
[Download terms](#)
[Terms of Use](#)