



**Part Number :** [1722991104](#)

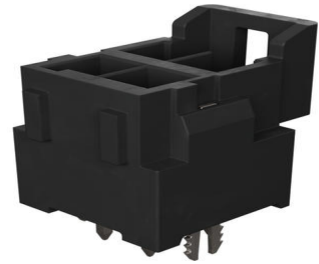
**Product Description :** Ultra-Fit Vertical Header, 3.50mm Pitch, Dual Row, 4 Circuits, with Solder Clips, Tin (Sn) Plating, Black, Glow-Wire Capable, Tray

**Series Number :** 172299

**Status :** Active

**Product Category :** PCB Headers and Receptacles

---



## Documents and Resources

### Drawings

[1722991104\\_sd.pdf](#)

[PK-172299-9001-001.pdf](#)

### 3D Models and Design Files

[STEP AP242](#)

[SOLIDWORKS](#)

[Creo](#)

[Symbol and Footprint \(Multi-Format\)](#)

[1722991104-000.zip](#)

[SYM-172299-1104-001.zip](#)

### Specifications

[1722990000-AS-000.pdf](#)

[1723230003-000.pdf](#)

[AS-172323-0001-001.pdf](#)

[1723230001-TS-000.pdf](#)

[1723231000-PS-CH-000.pdf](#)

[1723231000-PS-ES-000.pdf](#)

[1723231000-PS-JP-000.pdf](#)

[1723231000-PS-SK-000.pdf](#)


[PS-172323-0001-001.pdf](#)

[1723230001-TS-001.pdf](#)

---

## Product Environment Compliance

## Compliance

GADSL/IMDS	Compliant with Exemption 44; 33
China RoHS	 per SJ/T 11365-2006
EU ELV	Not Relevant
Low-Halogen Status	Low-Halogen per IEC 61249-2-21
REACH SVHC	Not Contained per D(2025)6375-DC (05 Nov 2025)
EU RoHS	Compliant per EU 2015/863

### Compliance Statements

- EU RoHS
- REACH SVHC
- Low-Halogen

### Industry Documents

- IPC 1752A Class C
- IPC 1752A Class D
- Molex Product Compliance Declaration
- IEC-62474
- chemSHERPA (xml)

### Substances of Interest

- PFAS

### EU RoHS Certificate of Compliance

### Additional Product Compliance Information

---

## Part Details

### General

Status	Active
Category	PCB Headers and Receptacles
Series	172299
Description	Ultra-Fit Vertical Header, 3.50mm Pitch, Dual Row, 4 Circuits, with Solder Clips, Tin (Sn) Plating, Black, Glow-Wire Capable, Tray
Application	Power, Wire-to-Board
Comments	See Product Specification for maximum current rating by circuit size and wire AWG
Component Type	PCB Header

Product Name	Ultra-Fit
UPC	887191737539

### Agency

CSA	LR19980
UL	E29179

### Electrical

Current - Maximum per Contact	12.0A
Voltage - Maximum	600V AC (RMS)/DC

### Physical

Breakaway	No
Circuits (Loaded)	4
Circuits (maximum)	4
Color - Resin	Black
Durability (mating cycles max)	25
First Mate / Last Break	No
Flammability	94V-0
Glow-Wire Capable	Yes
Guide to Mating Part	No
Keying to Mating Part	Yes
Lock to Mating Part	Yes
Material - Metal	Copper Alloy
Material - Plating Mating	Tin
Material - Plating Termination	Tin
Material - Resin	Liquid Crystal Polymer
Net Weight	1.542/g
Number of Rows	2
Orientation	Vertical
Packaging Type	Tray
PCB Locator	Yes
PCB Retention	Yes
PCB Thickness - Recommended	1.60mm
PC Tail Length	3.20mm

Pitch - Mating Interface	3.50mm
Pitch - Termination Interface	3.50mm
Plating min - Mating	1.524µm
Plating min - Termination	1.524µm
Polarized to Mating Part	Yes
Polarized to PCB	Yes
Shrouded	Fully
Temperature Range - Operating	-40° to +125°C
Termination Interface Style	Through Hole

### Solder Process Data

Max-Duration	90
Lead-Free Process Capability	WAVE
Max-Cycle	2
Max-Temp	260

---

### Mates With / Use With

#### Mates with Part(s)

Description	Part Number
Ultra-Fit Tangless Receptacle Housing, 3.50mm Pitch, Dual Row, 4 Circuits, Black, Glow-Wire Capable	<u>1722583104</u>

---

This document was generated on Dec 29, 2025