

6

5

4

3

2

1

D

D

C

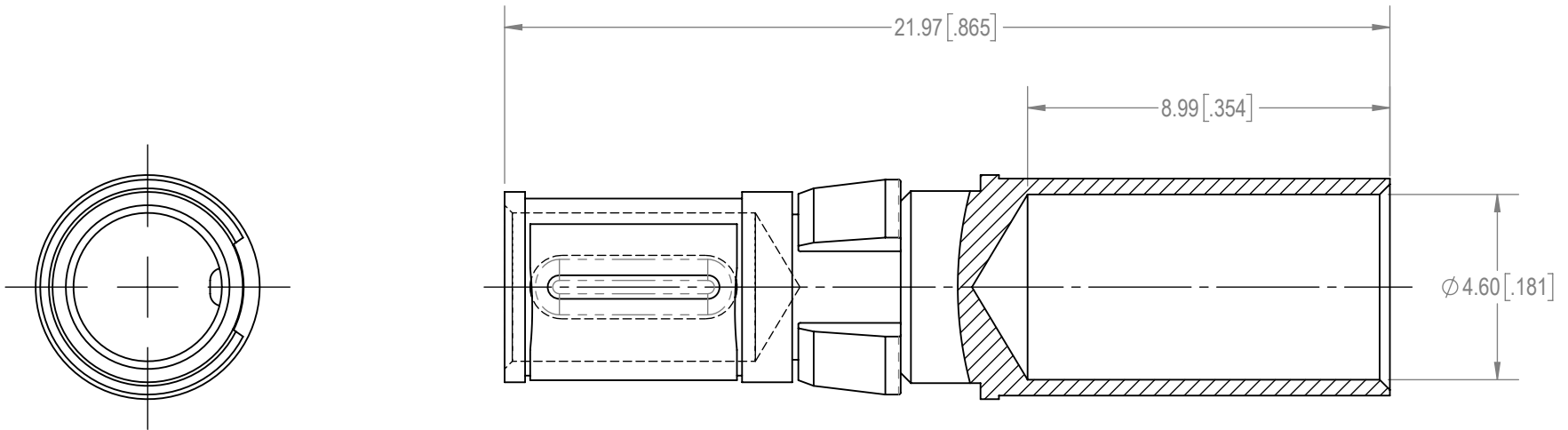
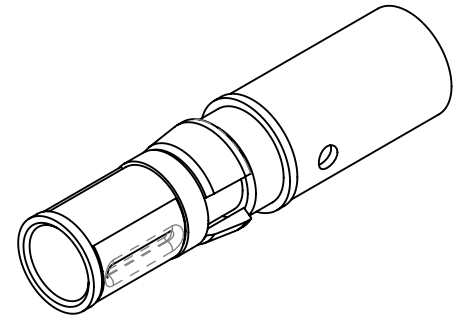
C

B


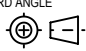
B

A

A

**NOTES:**

- MATERIAL AND FINISHES:**  
 CONTACT: PRECISION MACHINED HIGH CONDUCTIVITY COPPER ALLOY, 1.27 $\mu$  [.000050] GOLD OVER NICKEL PLATE.  
 RETAINER: POLYETHERIMIDE, BLACK COLOR.  
 SPRING CLIP: BERYLLIUM COPPER, 1.27 $\mu$  [.000050] GOLD OVER NICKEL PLATE.
- DETAILED PRODUCT, MECHANICAL AND ELECTRICAL INFORMATION IS AVAILABLE IN THE LATEST STANDARD DENSITY COMBO-D PRODUCT PUBLICATION AT [CONNECTPOSITRONIC.COM](http://CONNECTPOSITRONIC.COM).
- CRIMPING TOOL INFORMATION IS AVAILABLE AT [WWW.CONNECTPOSITRONIC.COM/CrimpToolCrosslist](http://WWW.CONNECTPOSITRONIC.COM/CrimpToolCrosslist).
- CONTACTS ARE COMPLIANT TO THE CURRENT RoHS DIRECTIVE.

|  |    |                              |    |   |   |  |
|--|----|------------------------------|----|---|---|--|
| BY   | SB | CHK                          | SS | 3RD ANGLE   | POSITRONIC BELIEVES THE DATA ON THE DRAWING TO BE RELIABLE. THE USER EMPLOYS SUCH INFORMATION AT HIS OWN DISCRETION AND RISK. POSITRONIC ASSUMES NO RESPONSIBILITY FOR RESULTS OBTAINED OR DAMAGES INCURRED FROM USE OF SUCH INFORMATION IN WHOLE OR IN PART. | <br><b>Positronic®</b><br>CONNECTPOSITRONIC.COM |
| APR  | PA | RELEASED DATE:<br>2021-03-27 |    |  |   |  |
| TOLERANCES   |    |                              |    | SCALE   | PART NUMBER   |  |
| ±0.03mm [.001 INCHES] FOR MALE CONTACT MATING DIAMETERS<br>±0.08mm [.003 INCHES] FOR CONTACT TERMINATION DIAMETERS<br>±0.13mm [.005 INCHES] FOR ALL OTHER DIAMETERS<br>±0.38mm [.015 INCHES] FOR ALL OTHER DIMENSIONS<br>±5° FOR ALL ANGLES<br>DIMENSION ARE IN MILLIMETERS [INCHES] |    |                              |    | NTS   | FC4008D/AA-15   |  |
|  |    |                              |    | TITLE   | SERIES  |  |
|  |    |                              |    | FC4008D/AA-15   | CBD/CBM   |  |
| CREATED ON:  |    |                              |    | SHEET   | REV   |  |
| 2021-03-25   |    |                              |    | SHEET 1 OF 1  | B   |  |

6

5

4

3

2

1