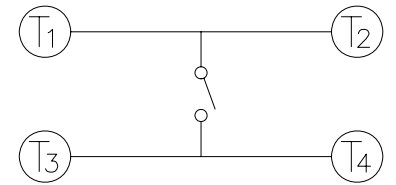
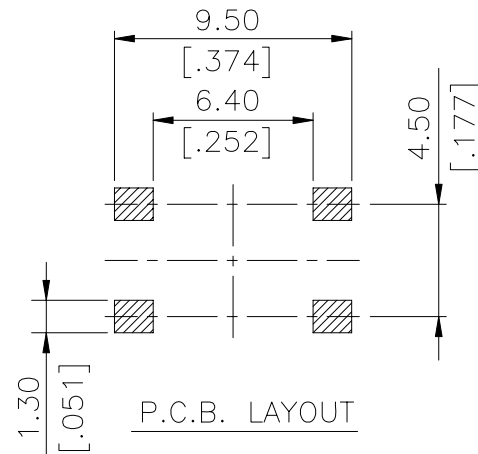
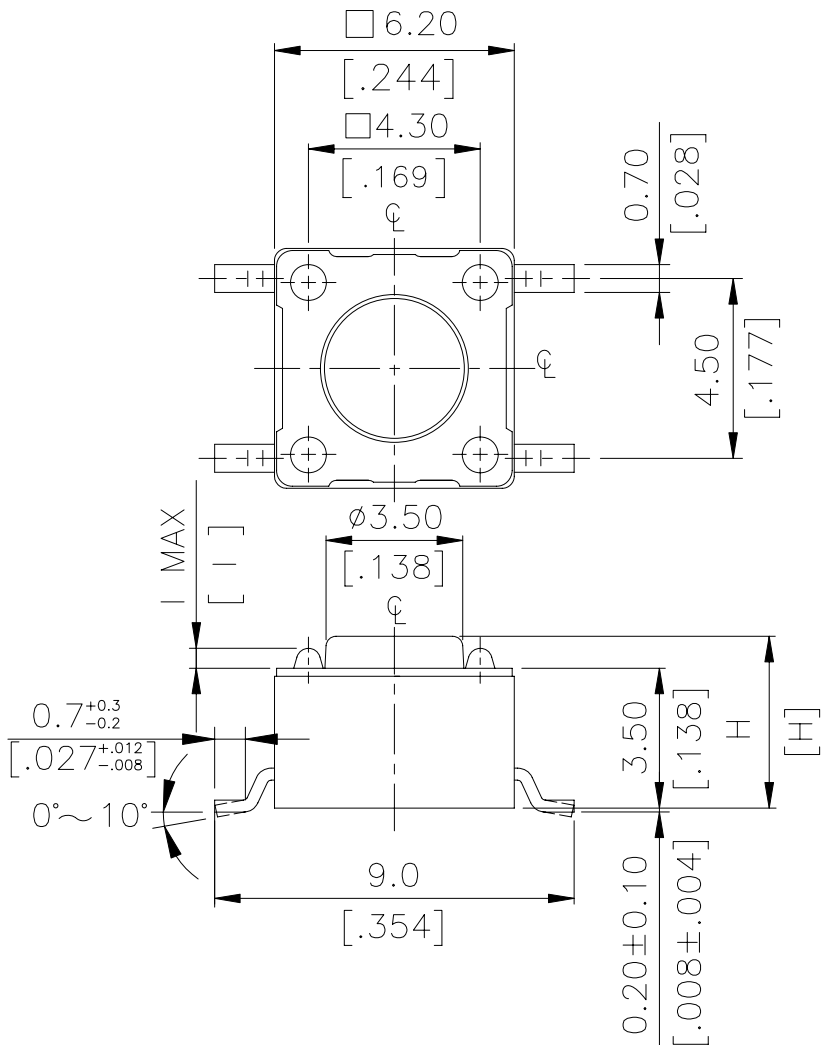


DTSM(G)-6(2) SERIES

DIMENSIONS

DTSM-6



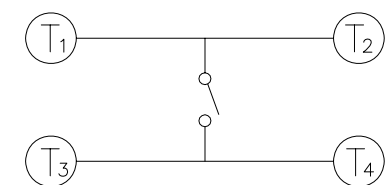
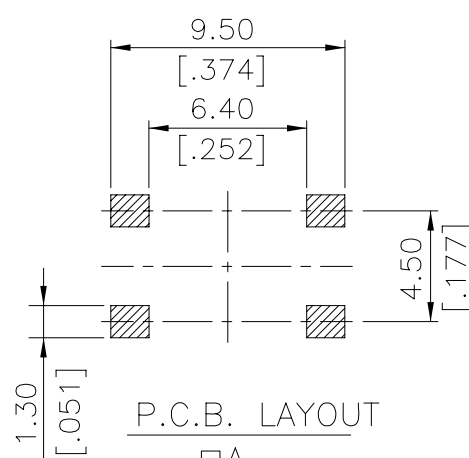
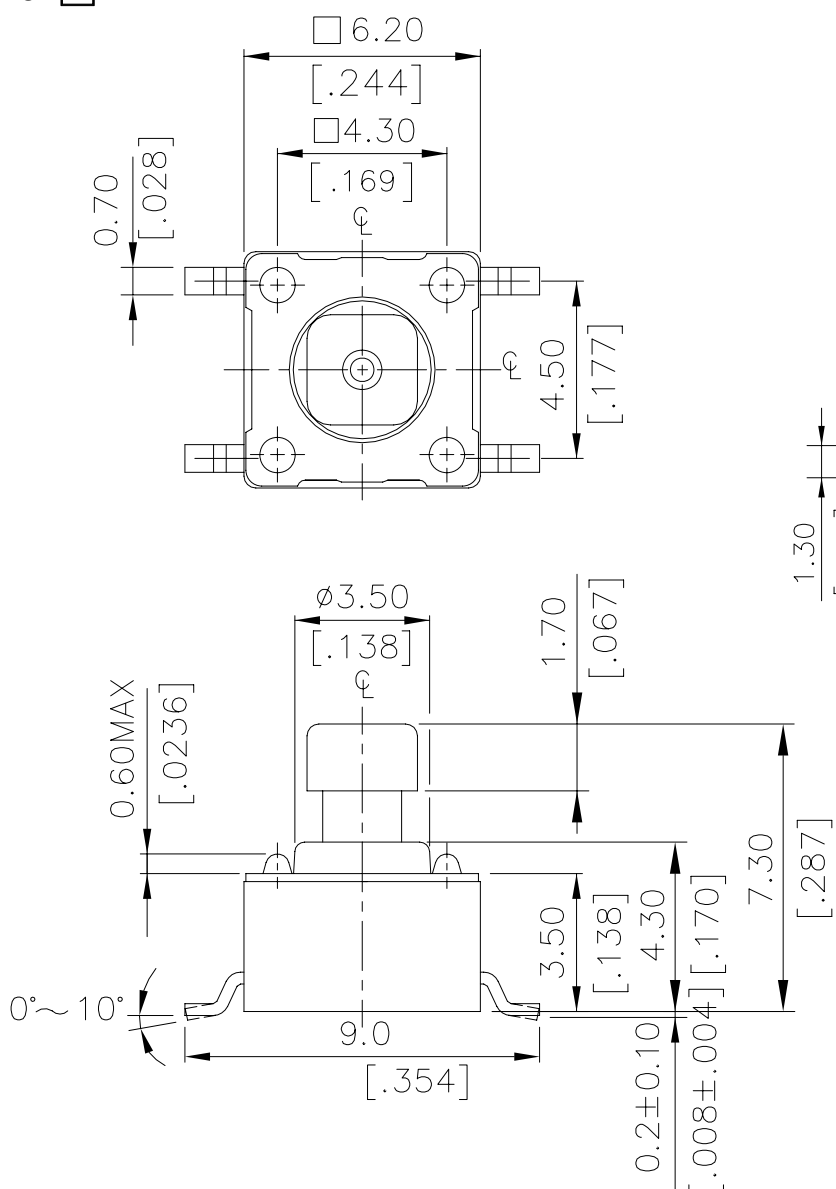
CIRCUIT DIAGRAM

DTSM-62~66□-V	0.6 MAX	.0236MAX
DTSM-61□-V	0.5 MAX	.0197MAX
PROD. NO.	I	INCHES.

DTSM-66 □ -V	13.0	[.512]
DTSM-65 □ -V	9.5	[.374]
DTSM-63 □ -V	7.0	[.275]
DTSM-62 □ -V	5.0	[.197]
DTSM-61 □ -V	4.3	[.169]
PROD. NO.	H	

General Tolerance : ±0.2mm

DTSM-64□



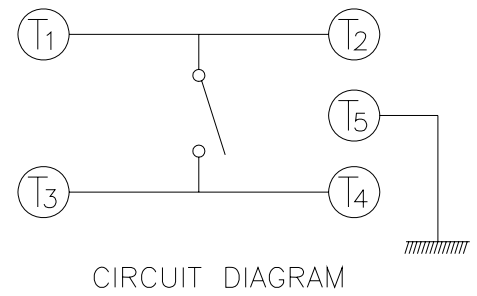
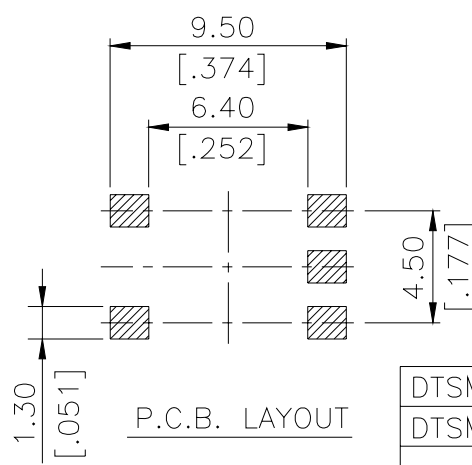
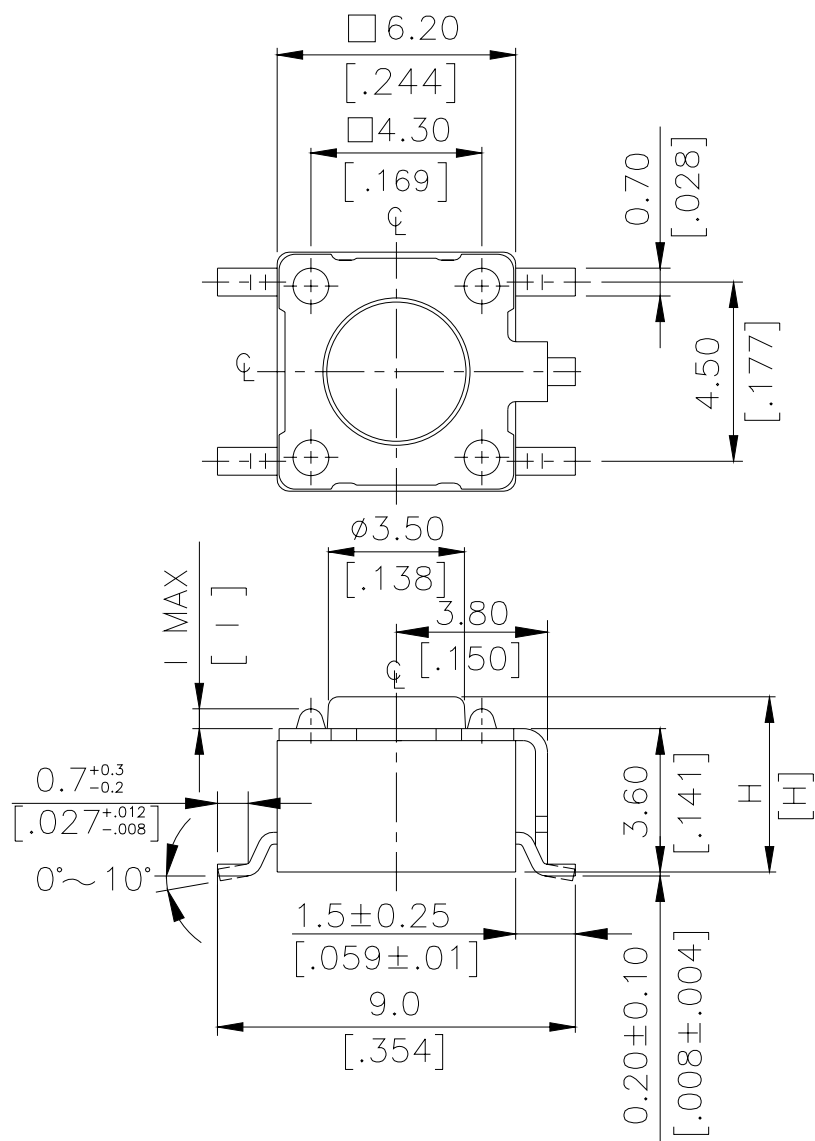
CIRCUIT DIAGRAM

DTSM-644□-V	□A	2.4	[.095]
	□B	1.6	[.063]
DTSM-648□-V	□A	2.8	[.110]
	□B	2.0	[.079]
PROD. NO.	LOC.	MM.	INCH.

DIMENSION

General Tolerance : ±0.2mm

DTSMG-6

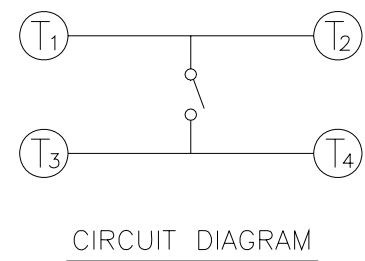
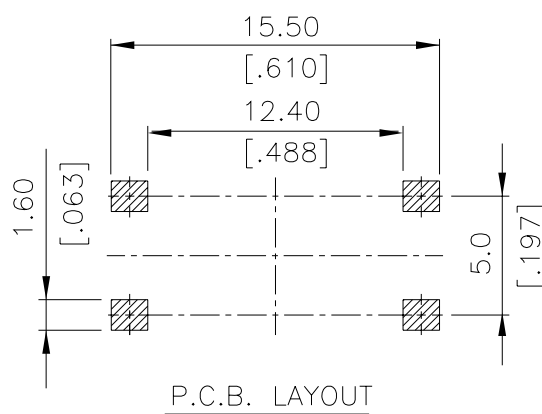
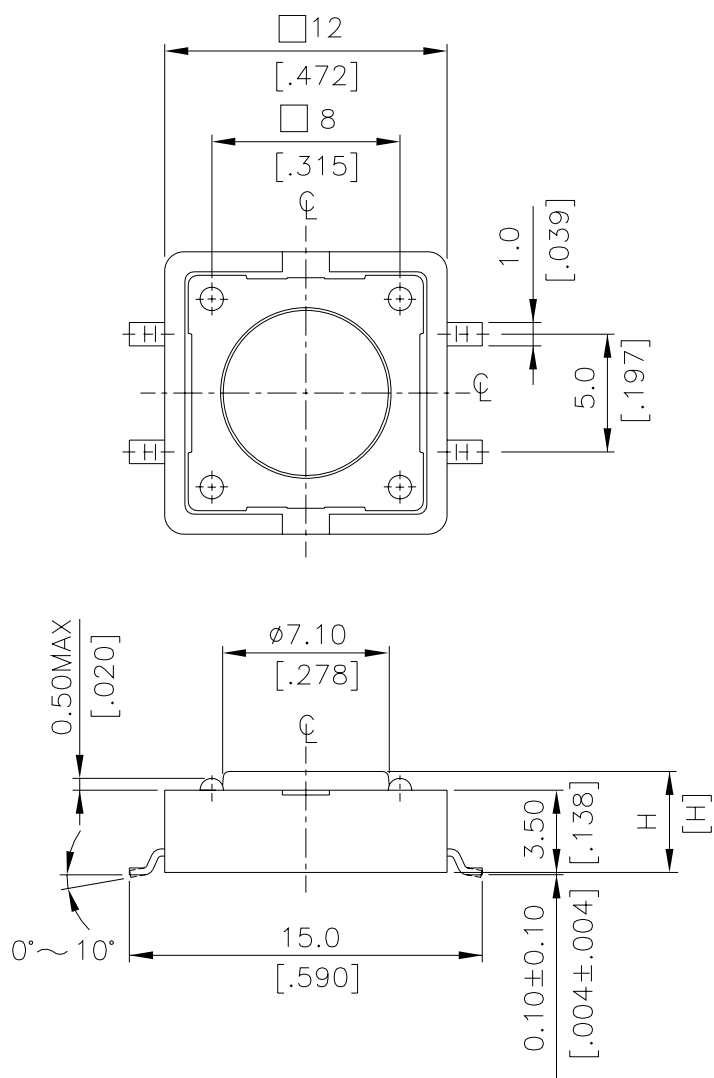


DTSMG-62~66□-V	0.5 MAX	.02MAX
DTSMG-61□-V	0.4 MAX	.016MAX
PROD. NO.	I	INCHES.

DTSMG- 6 6 □ -V	13.0 [0.512]
DTSMG- 6 5 □ -V	9.5 [0.374]
DTSMG- 6 3 □ -V	7.0 [0.275]
DTSMG- 6 2 □ -V	5.0 [0.197]
DTSMG- 6 1 □ -V	4.3 [0.169]
PROD. NO.	H

General Tolerance : ±0.2mm

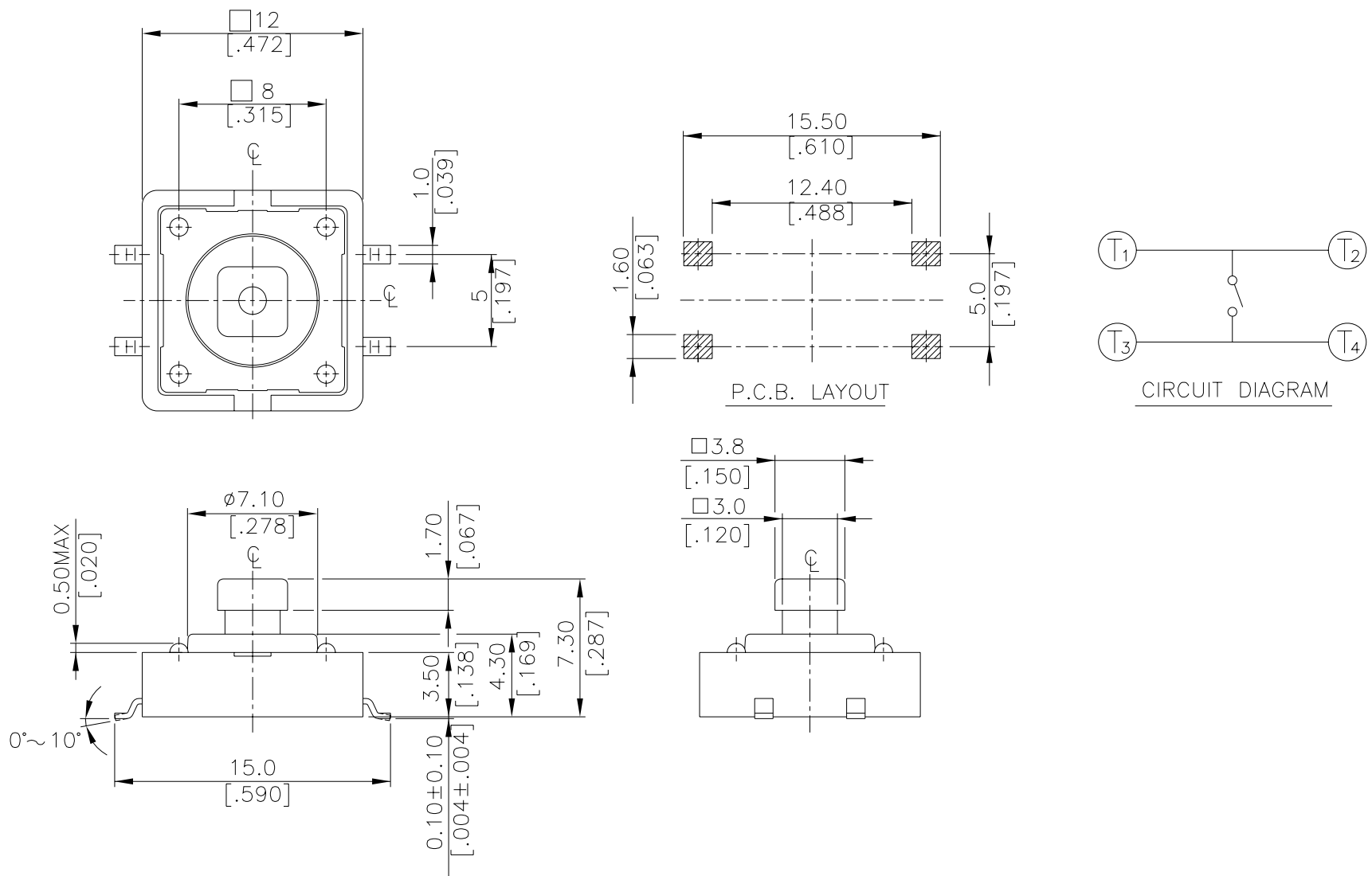
DTSM-2



DTSM-25	8.5[0.335]
DTSM-21	4.6[0.169]
PART NO	H

General Tolerance : ±0.2mm

DTSM-24



General Tolerance : ±0.2mm

HOW TO ORDER

DTSM □ - □ □ □ □ - □ - □

- Package style :
B=Tube
T/R=Tape&Reel <▲ Except DTSM-66>
- Soldering :
V=Lead Free Solderable
- =Phosphor Bronze Dome
S= Stainless Steel Dome
- Color Of Stem For Operating Force :
K=Black,100gf
N=Brown,160gf
R=Red,260gf
S=Salmon,320gf
Y=Yellow,520gf
- Dimension H :
1=4.3mm
2=5.0mm
3=7.0mm
44=7.3mm(SQ)X2.4mm
48=7.3mm(SQ)X2.8mm
5=9.5mm
6=13mm
- Prod Size :
6=6X6mm
- =Without Ground Terminal
G=With Ground Terminal
- Surface-Mourting Type Tactile Switch (Non-Washable)**

DTSM - □ □ □ - □ - □ - □

Package Style :
B = Tube
T/R = Tape & Reel

Soldering :
V = Lead Free Solderable

□ = Phosphor Bronze Dome
(*S = Stainless Steel Dome)
(*12X12 K、S、Y Unavailable)

Color Of Stem For Operating Force :
N = Brown, 160gf
R = Red, 260gf
S = Salmon, 320gf

Dimension H :
1 = 4.3mm
4 = 7.3mm(SQ)X3.8mm
5 = 8.5mm

Prod. Size :
2 = 12X12mm

Surface-Mounting Type Tactile Switch
<Non-Washable>

SPECIFICATION

△MECHANICAL

520 ± 130gf Yellow (Y)
320 ± 80gf Salmon (S)
Operation Force: 260 ± 50gf Red (R)
160 ± 50gf Brown (N)
100 ± 50gf Black (K)

Stroke: (6x6) 0.25 +0.2mm / -0.1mm
(12X12) 0.35 ±0.1mm

Operation Temperature: -25°C to +70°C

Storage Temperature: -30°C to +80°C

△ELECTRICAL(6x6)

Electrical Life: 1,000,000 cycles for 320gf, 520gf
500,000 cycles for 260gf
300,000 cycles for 100gf, 160gf

(Phosphor bronze)

ELECTRICAL (12X12)

Electrical Life: 100,000 cycles for 320gf
100,000 cycles for 260gf
200,000 cycles for 160gf

(Stainless Steel)

Electrical Life: 500,000 cycles for 260gf
1,000,000 cycles for 160gf

Rating: 50mA , 12VDC

Contact Resistance: 100mΩ max.

Insulation Resistance: 100MΩ min. at 500VDC

Dielectric Strength: 250VAC/ minute

Contact Arrangement: SPST

MATERIAL

△COVER: Stainless Steel(for DTSM-6、2)
Nickel Silver (for DTSMG-6)

△BASE: UL94V-0 Nylon High-Temp. Thermoplastic
Color: Black (Standard)
Color: Brown (V option)

△STEM: UL94V-0 Nylon High-Temp. Thermoplastic
Color: Black (100gf), Brown (160gf)
Red (260gf), Salmon (320gf)
Yellow (520gf)

△CONTACT DISC: Phosphor Bronze with silver cladding
(Standard)
Stainless Steel(V option)

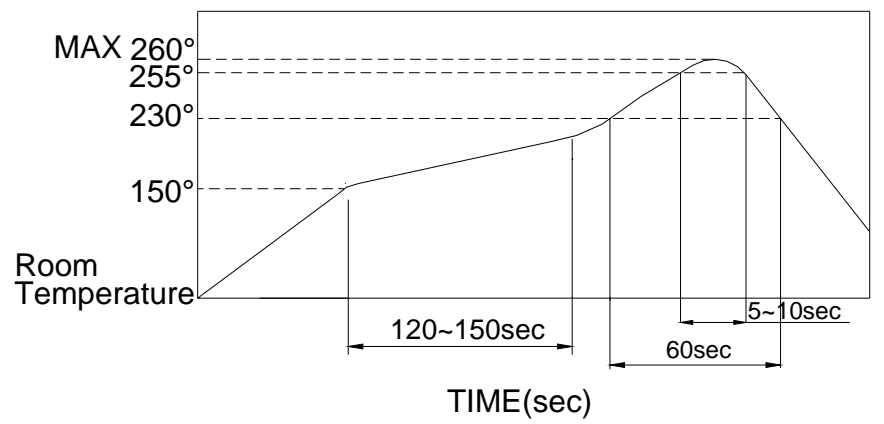
△TERMINAL: Brass with silver plated

SOLDERING PROCESS

△ **HAND SOLDERING** : Use a soldering iron of 30 watts, controlled at 350°C approximately 5 seconds while applying solder.

△ **REFLOW SOLDERING** : When applying reflow soldering, the peak temperature or the reflow oven should be set to 260°C max.

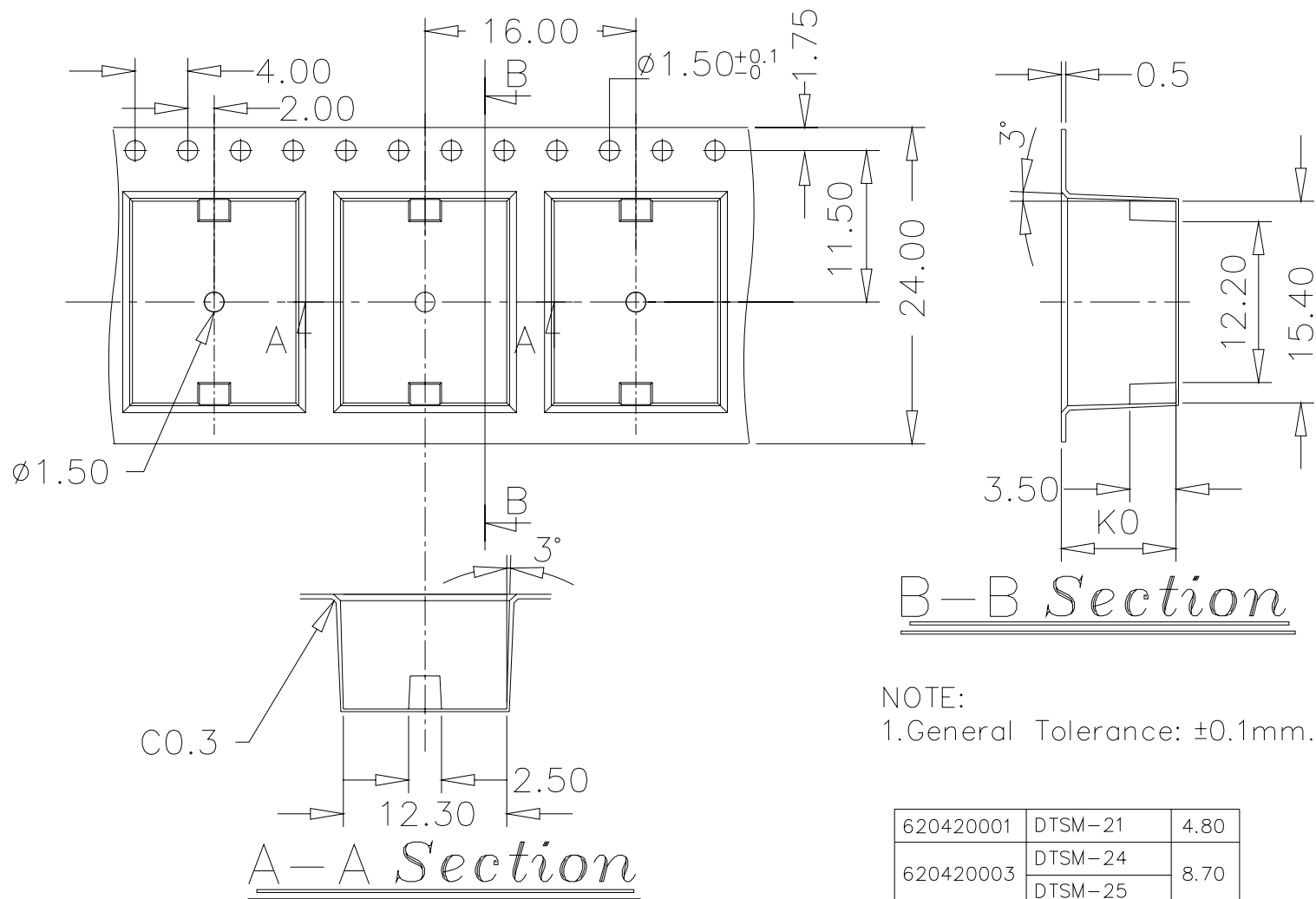
△ **Temperature Profile:**



PACKING

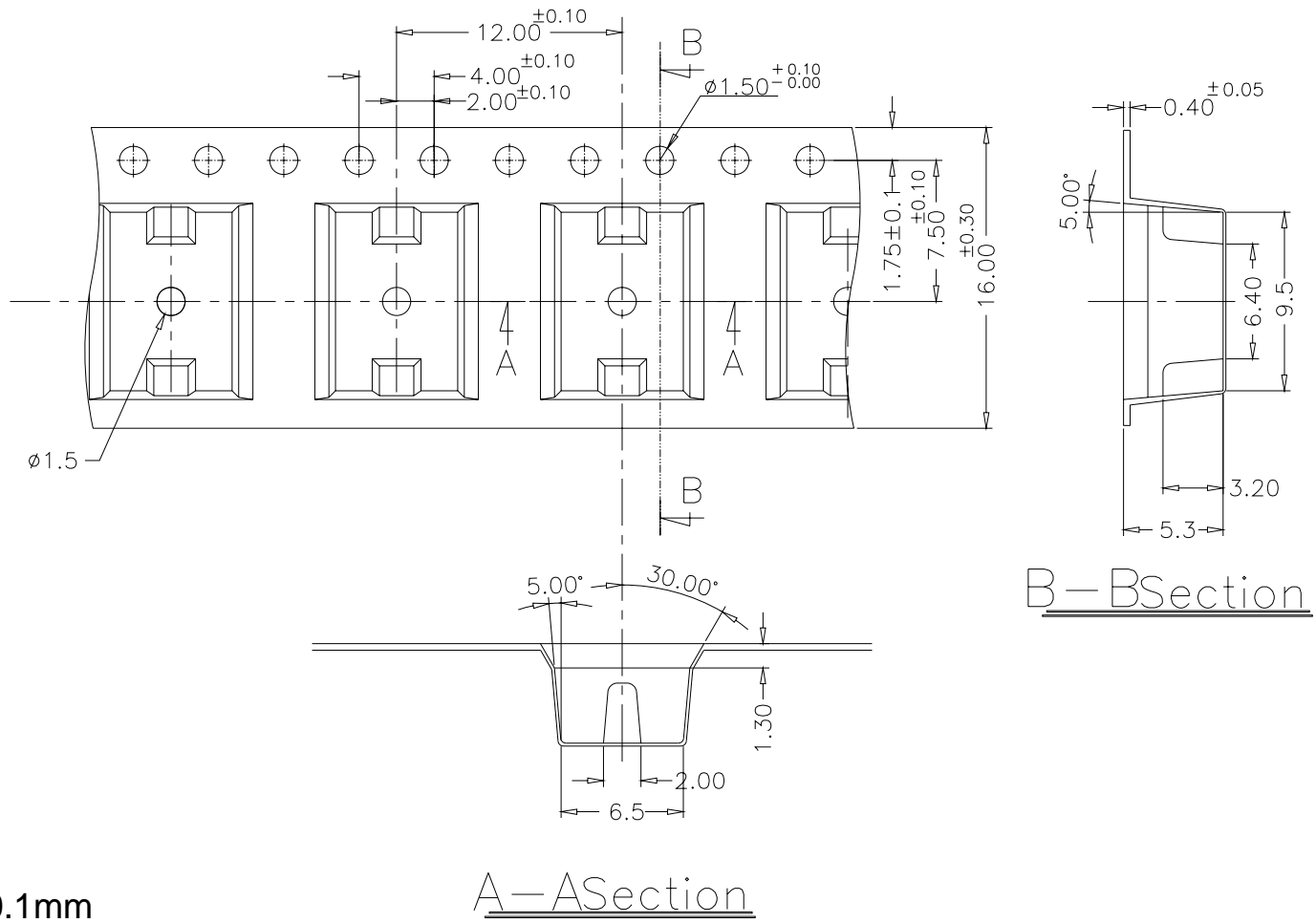
Part Number	Number Per Tube	Number Per Reel
DTSM-61	77	1000
DTSMG-61	-	1000
DTSM-62	77	900
DTSMG-62	-	1000
DTSM-63	77	700
DTSMG-63	-	500
DTSM-644(8)	77	500
DTSMG-644(8)	-	500
DTSM-65	77	380
DTSMG-65	-	380
DTSM-66	77	-
DTS(M)-21	40	700
DTS(M)-24	40	500
DTS(M)-25	40	400

DTSM-2 REEL

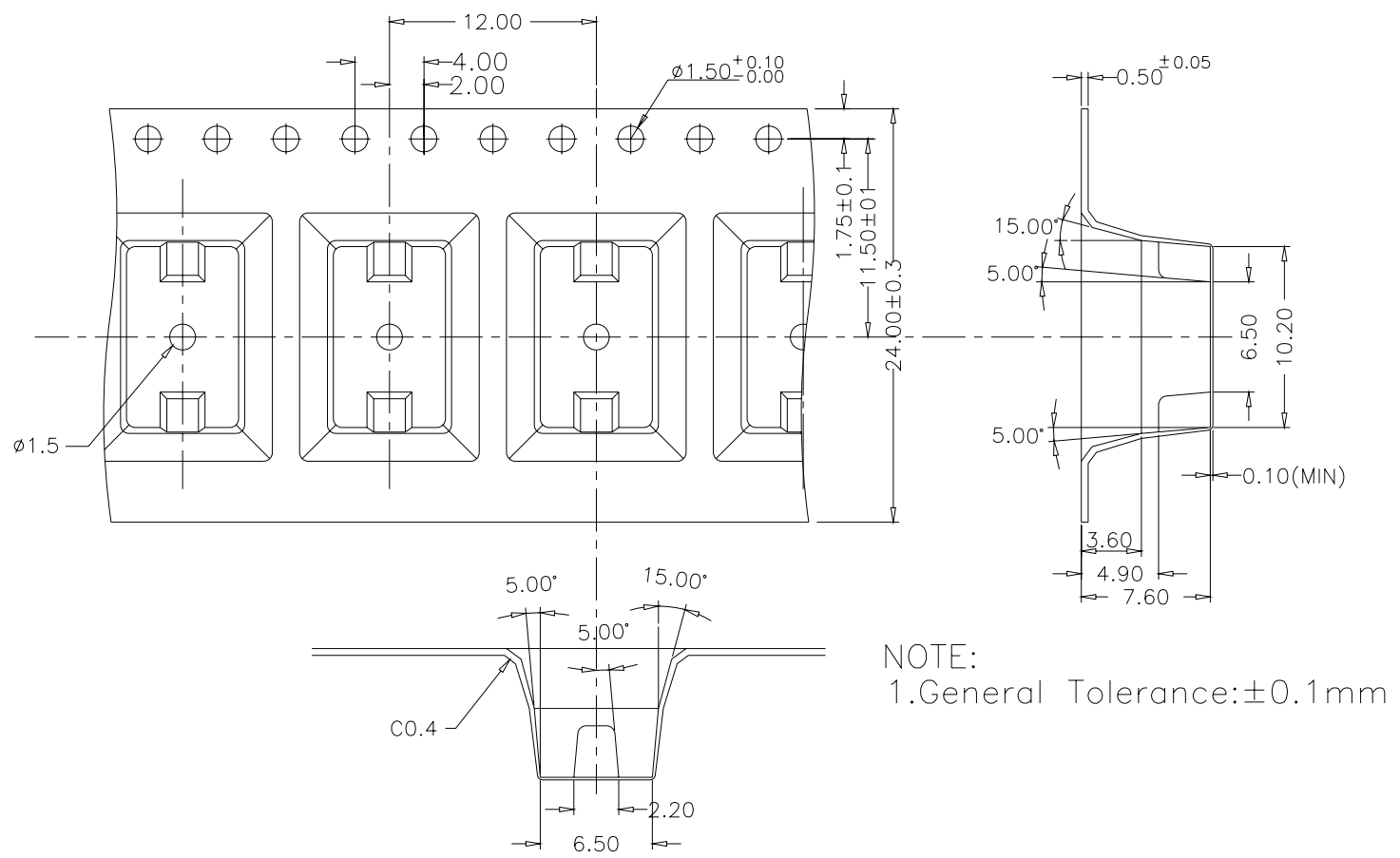


General Tolerance : $\pm 0.1\text{mm}$

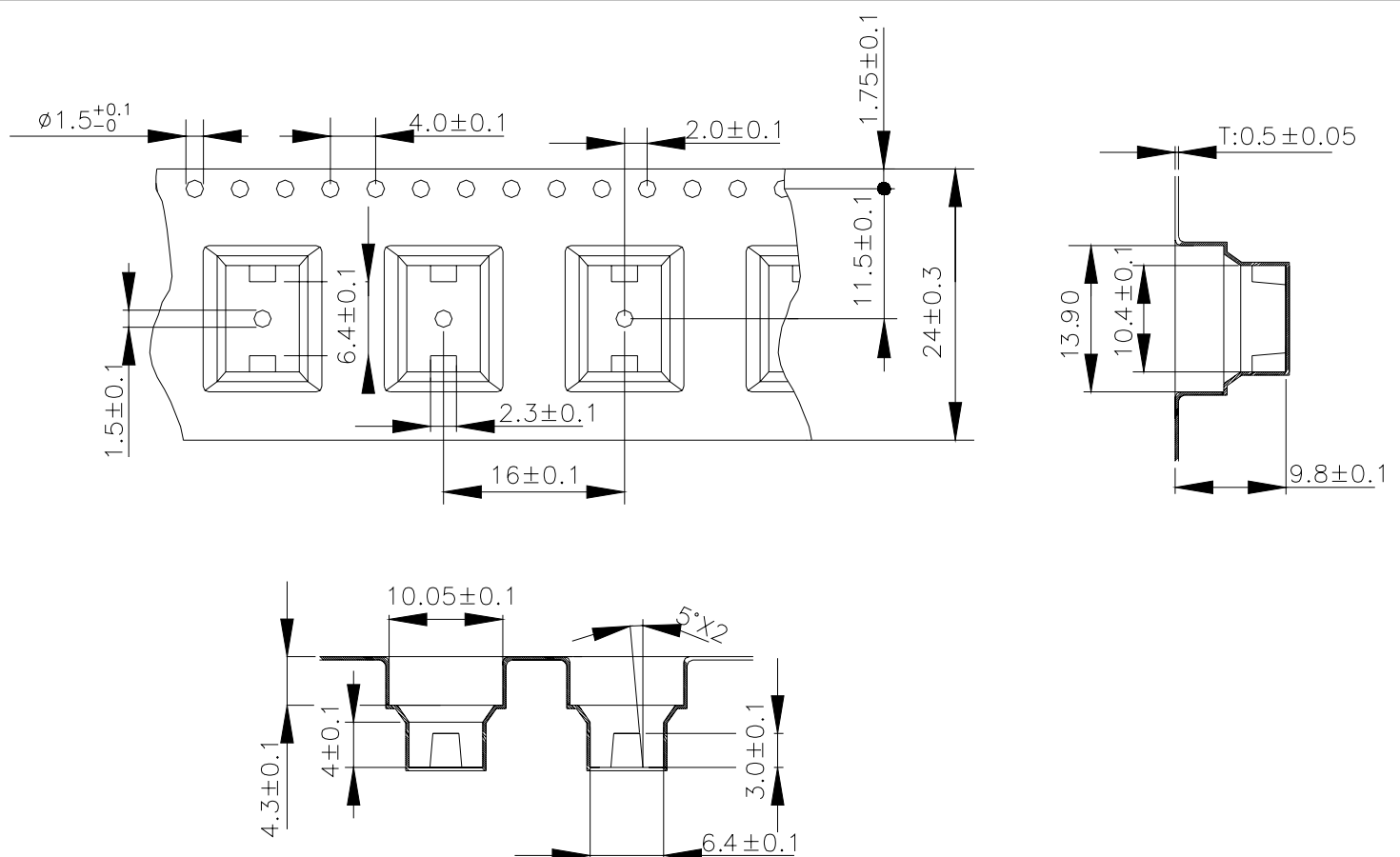
DTSM-61.62 REEL



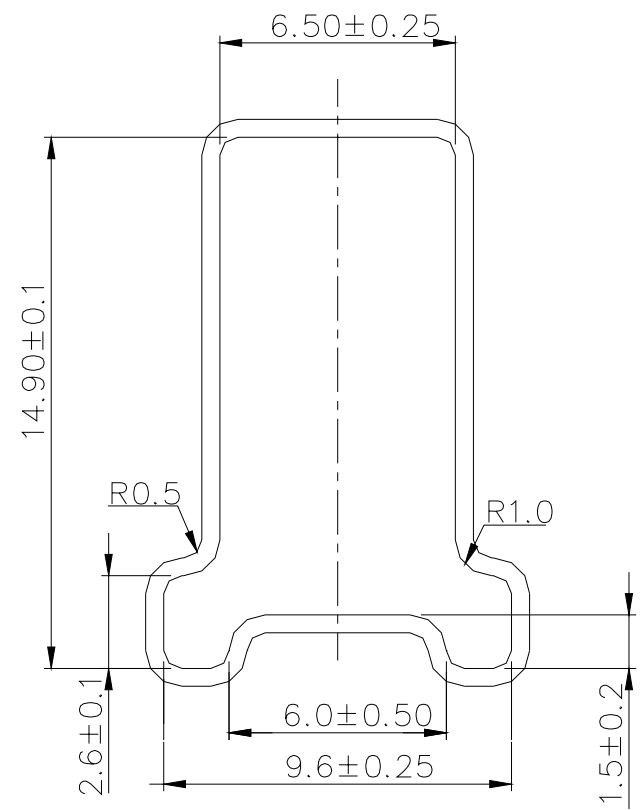
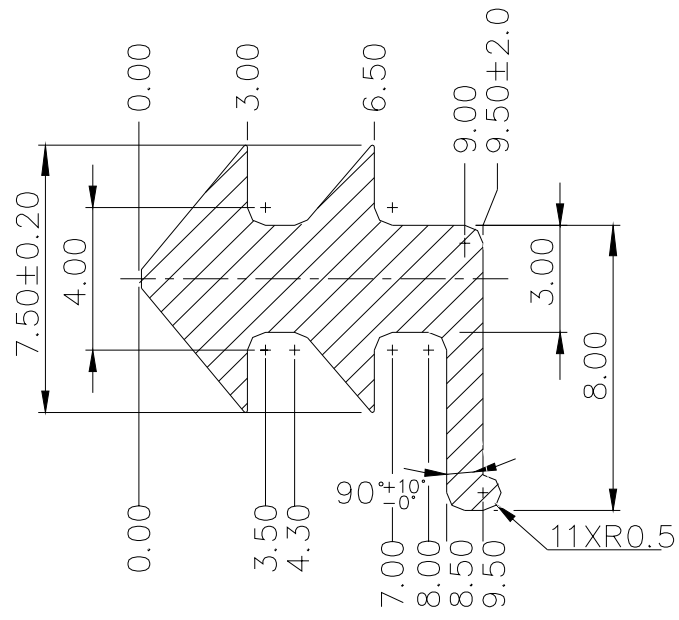
DTSM-64 REEL



DTSM-65 REEL

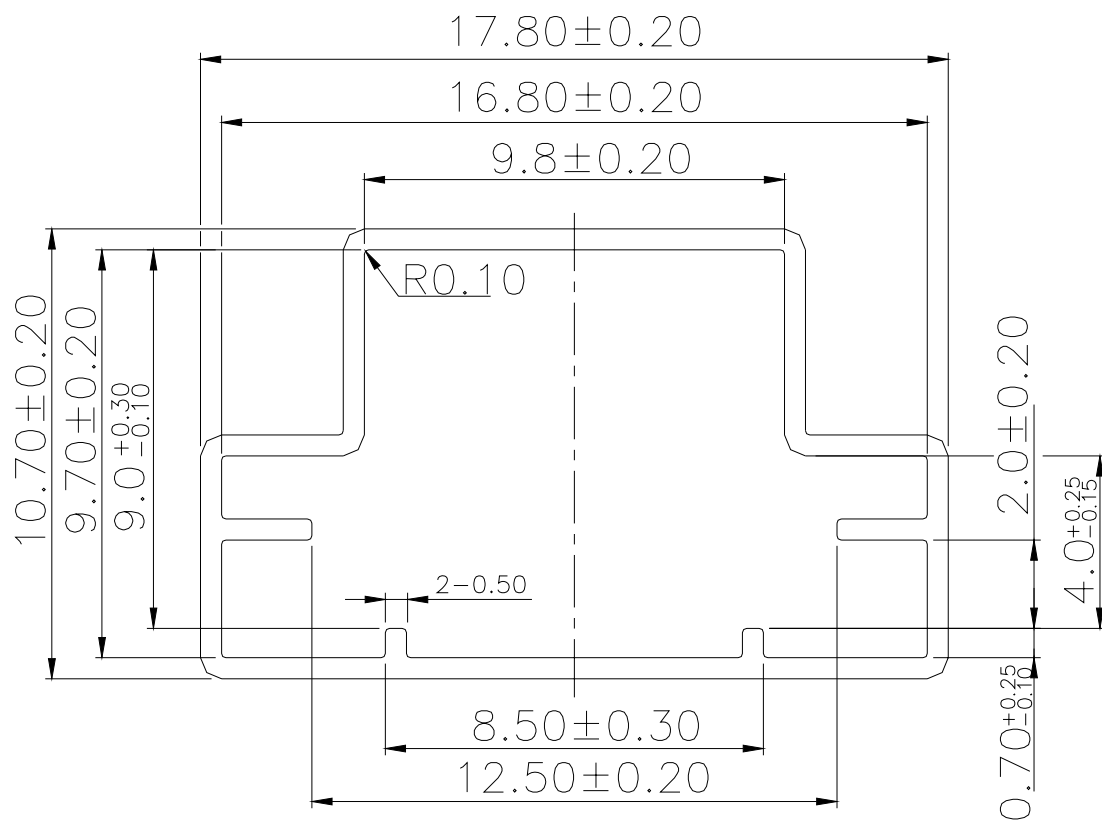


DTSM-65.66 TUBE



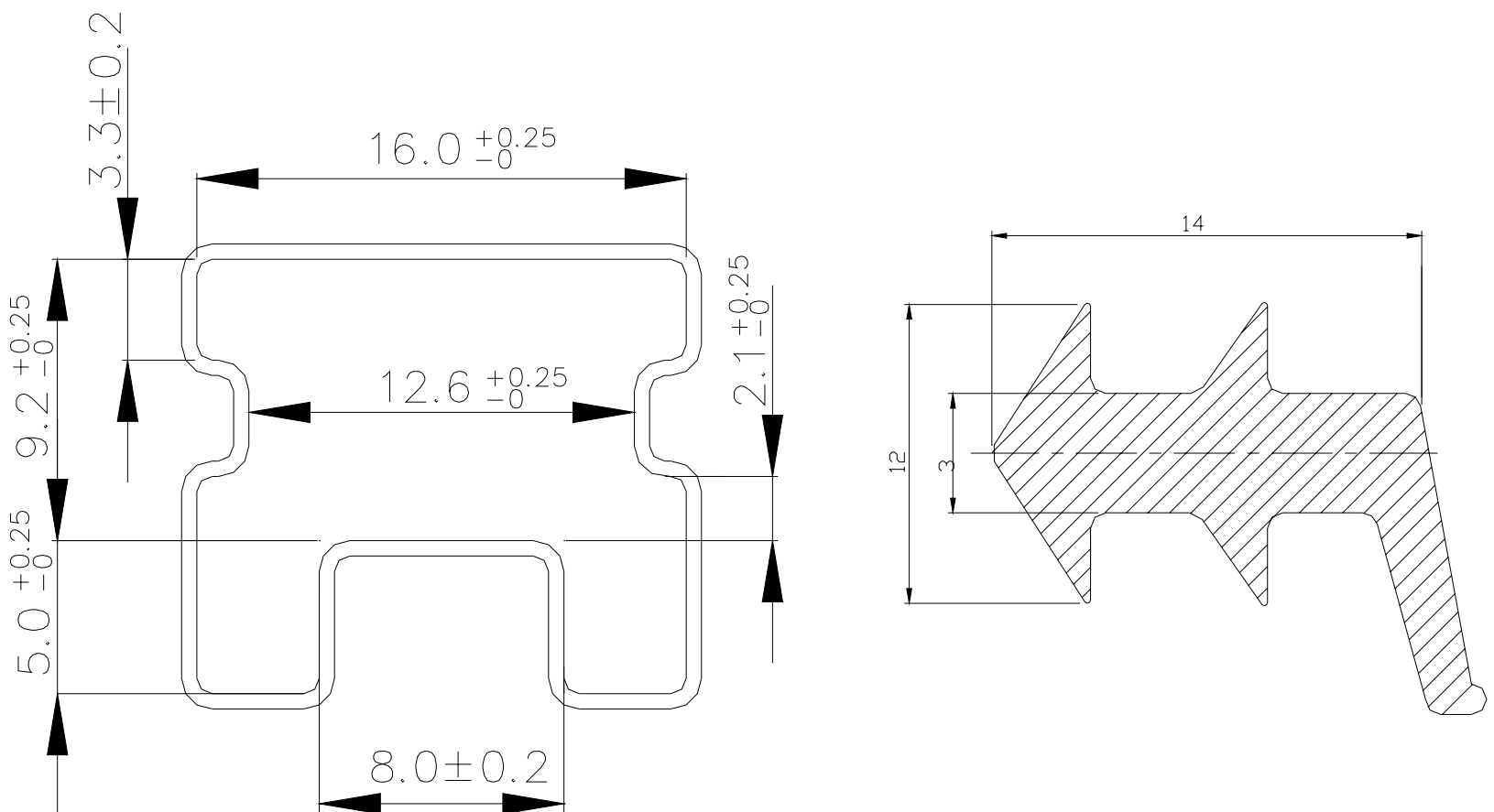
General Tolerance : $\pm 0.2\text{mm}$

DTSM-2 TUBE



General Tolerance : $\pm 0.2\text{mm}$

DTS-2 TUBE



General Tolerance : $\pm 0.2\text{mm}$