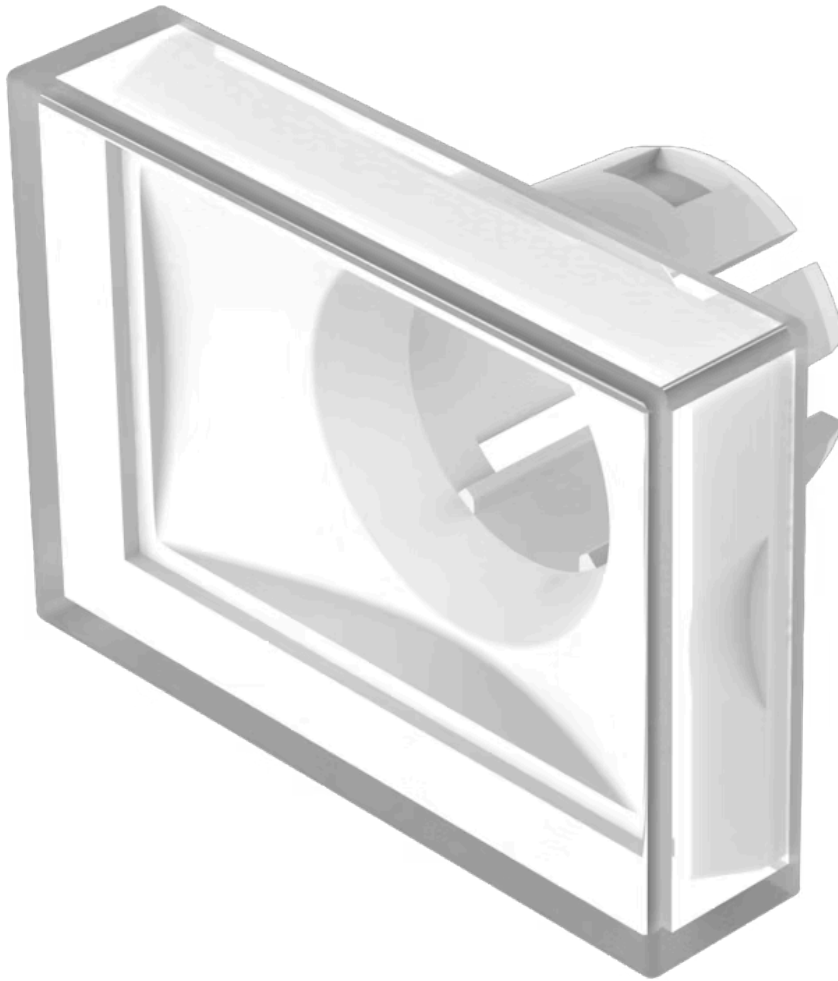


Lens

51-
903.7



<https://www.eao.com/component/51-903.7/en/lens>

Your product:



51-903.7 Lens

FRONT

Front form: Rectangular

OPERATING-/INDICATION PART

Lens colour: Colourless

Lens material: Plastic

Lens illumination: Illuminated

Lens shape: Flush

Lens optics: transparent

MECHANICAL CHARACTERISTICS

Weight: 0.002 kg

CERTIFICATE

REACH: REACH compliant

RoHS: RoHS compliant

OTHER

Short Description: Lens, 21.5 mm x 15.3 mm, Illuminated, Colourless, Flush, Plastic

Dimension: 21.5 mm x 15.3 mm