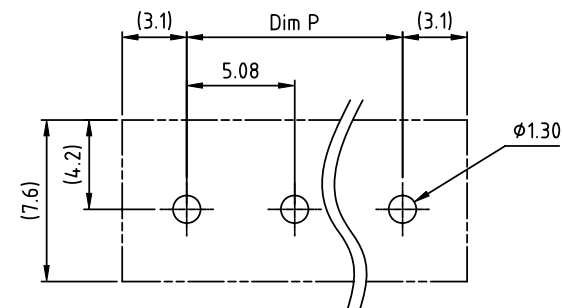
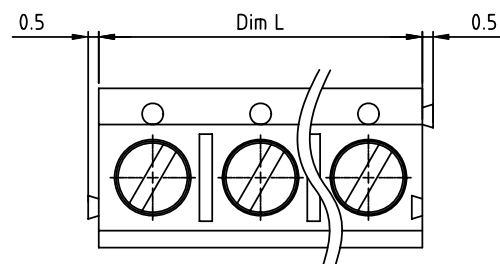
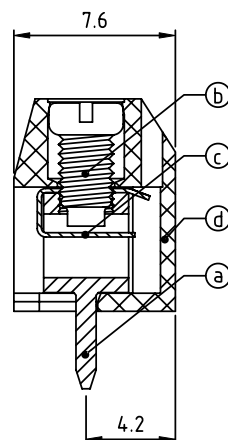
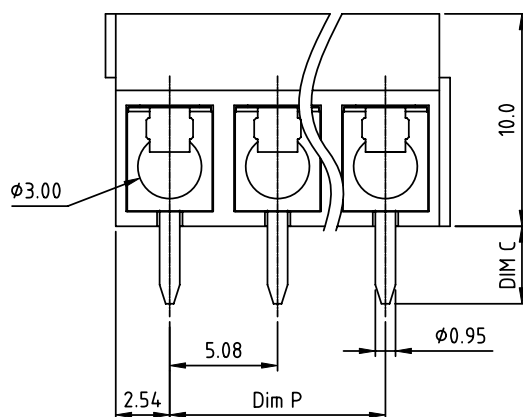


PRODUCT NUMBER	PITCH
TCxx23xx00J0G	5.08 mm



RECOMMENDED P.C.B LAYOUT
TOP VIEW



Material:

- Item (a) Terminal body: Brass(CuZn), Tin plated
- Item (b) Terminal screw: Steel Zinc plating "-" slot type
- Item (c) Wire guard: Stainless steel
- Item (d) Terminal housing: Thermoplastic (UL94V-0)

Electrical cULus

- Voltage rating: 300VAC
- Current rating: 15A
- Wire range:
- Solid wire(AWG): 14-22
- Stranded wire(AWG): 14-22
- Torque: 2.6Lb-In
- Screw: M2.6
- Wire strip length: 5-6mm
- Withstanding Voltage: 1.6KV
- Operating temperature: -40°C to +115°C
- Soldering temperature: 260°C±5°C/5 Sec
- Safety Approval: cULus

N = Number of poles
Dim L=Nx5.08
Dim P=(N-1)x5.08

Poles	Dim L	Dim P
2-6p	±0.15	±0.10
7-12p	±0.20	±0.20
13-18p	±0.30	±0.25
19-24p	±0.40	±0.30

PART NO.: TC xx 23 x x 00J0 G

End stackable	No. of poles	Body Color	DIM C Length	RoHS compliant
0	2	Black (RAL9005)	0	4.4 mm (lead<4%)
02	2 poles	Red (RAL3001/D)	1	3.8 mm In copper Alloy
03	3 poles	Orange(RAL2011/P)	2	3.5 mm
...	...	4 Yellow(RAL1018/A)	5	Green(RAL6018/T)
24	24 poles	6 Blue (RAL5015/A)	8	Grey(RAL7035/D)
		9 White(RAL1102)		
		C Green(RAL6018/U)		

mat'l. code				surface	tolerance	projection	product family			
ltr	ecn	no	dr	date	ASME Y14.5	ASME Y14.5	TERMINAL BLOCK			
					tolerances unless otherwise specified		title			
					angles	X.±0.5	TERMINAL BLOCK			
					flat	X.X±0.3	WIRE PROTECTOR,180D WIRE INLET			
					X°±1°	X.XX±0.1	scale			
					dr	EVIN ZHONG 033114	dwg no			
					enrg	EVIN ZHONG 033114	sheet 1 of 1 size			
					chr	HANKE FENG 033114	TCxx23xx00J0G			
					appd	SHI JUN 033114	A4			
sheet index				revision	A		type			
				sheet	1		CUSTOMER Drawing			