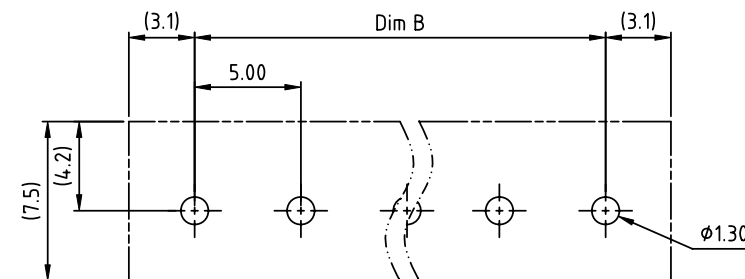
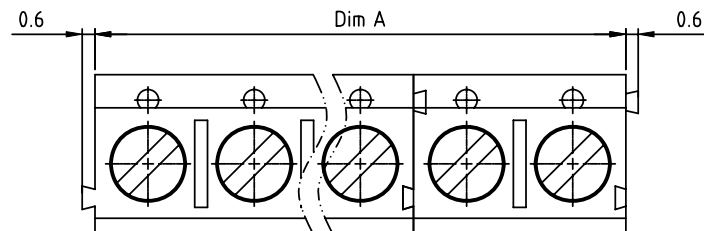
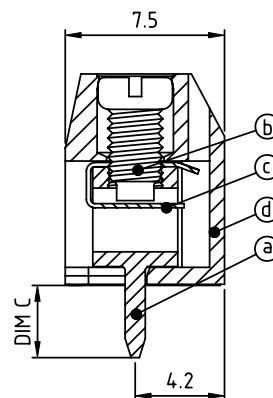
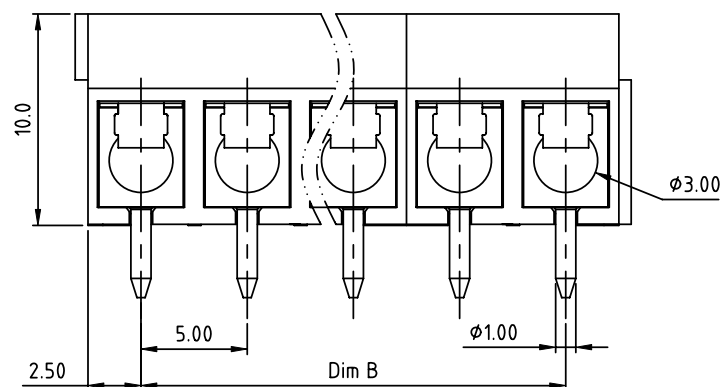


PRODUCT NUMBER	PITCH
TCxx03xx00J0G	5.00 mm



RECOMMENDED P.C.B LAYOUT
TOP VIEW



Material:

- Item ① Terminal body: Brass(CuZn), Tin plated
- Item ② Terminal screw: Steel Zinc plating "-" slot type
- Item ③ Wire guard: Stainless steel
- Item ④ Terminal housing: Thermoplastic (UL94V-0)

Electrical cULus/VDE

- Voltage rating: 300VAC/250VAC
- Current rating: 15A/17.5A
- Wire range: 0.5-1.5mm²
- Solid wire(AWG): 14-22
- Stranded wire(AWG): 14-22
- Torque: 2.6Lb-In/0.4Nm
- Screw: M2.6
- Wire strip length: 5-6mm
- Withstanding Voltage: 1.6KV/2KV
- Operating temperature: -40°C to +115°C
- Soldering temperature: 260°C±5°C/5 Sec
- SAFETY APPROVAL : cULus VDE

N = Number of poles
Dim A=Nx5.0
Dim B=(N-1)x5.0

Poles	Dim A	Dim B
2-6p	±0.15	±0.10
7-12p	±0.20	±0.20
13-18p	±0.30	±0.25
19-24p	±0.40	±0.30

PART NO.: TC xx 03 x x 00J0 G

End stackable		Body Color		DIM C Length		RoHS compliant	
No. of poles							
02	2 poles	0	Black (RAL9005)	0	4.4mm	(lead<4%)	In copper Alloy
03	3 poles	3	Red (RAL3001/D)	1	3.8mm		
...	...	4	Orange(RAL2011/P)	2	3.5mm		
24	24 poles	5	Yellow(RAL1018/A)	3	2.9mm		
		6	Green(RAL6018/T)				
		8	Blue (RAL5015/A)				
		9	Grey(RAL7035/D)				
		9	White(RAL1102)				
		C	Green(RAL6018/U)				

mat'l. code				surface	tolerance	projection	product family	
ltr	ecn	no	dr	date	ASME Y14.5	ASME Y14.5	TERMINAL BLOCK	
					tolerances unless otherwise specified		title	
					angles	X.±0.5	TERMINAL BLOCK	
					fillet	X.X±0.3	WIRE PROTECTOR,TWO INTERLOCKS,180D WIRE INLET	
					X*±1°	X.XX±0.1	scale	
					dr	EVIN ZHONG 033114	sheet 1 of 1 size	
					enr	EVIN ZHONG 033114	Txx03xx00J0G	
					chr	HANKE FENG 033114	A4	
					appd	SHI JUN 033114	CUSTOMER Drawing	
sheet	revision	A						
index	sheet	1						