

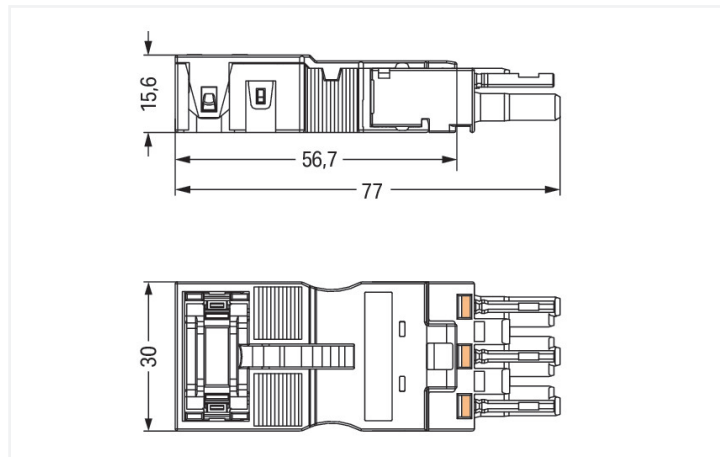
Data Sheet | Item Number: 770-203/035-000

Socket; with strain relief housing; 3-pole; Cod. A; 4,00 mm²; black

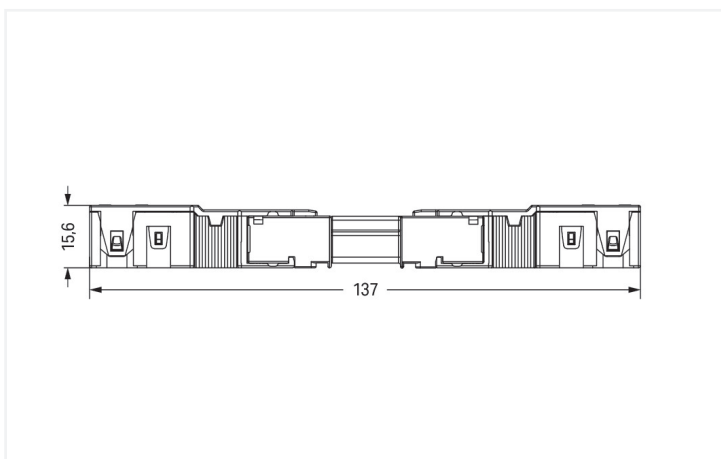
<https://www.wago.com/770-203/035-000>



Color: ■ black



Dimensions in mm



Dimensions in mm
Overall length when mated

Female connector/socket WINSTA® MIDI with protection type IP2XD

The WINSTA® MIDI female connector/socket 3-pole allows installation of fine-stranded and solid conductors. WAGO pluggable installation connectors are useful when specifications repeat or are distributed on a specific grid, for example for installing grid lighting or flush-mount lighting. The color coding and mechanical coding of the pluggable installation connector ensure error-free installation of the individual components – including protection against mismatching. Thanks to the color coding and mechanical A coding of WINSTA® MIDI pluggable installation connectors, you can clearly distinguish different circuits. This pluggable installation connector is designed for a voltage load of up to 25 A. Thus, it can also be used for high power loads. WINSTA® MIDI with Push-in CAGE CLAMP® spring pressure connection technology is found in a broad range of individual products you can use for quick, easy, flexible, and secure electrical installation. The strip length is 48 mm.

WINSTA® MIDI solutions for your electrical installation – protected against mismatching and maintenance-free

The WINSTA® Pluggable Connection System is ideally tailored to the strict requirements of building installation. It makes electrical installation pluggable, and thus more efficient, more reliable, and error-free. Using this pre-assembled system reduces assembly times and installation errors at the construction site. Now you can also lower installation costs without compromising quality and safety: with protection against mismatching reduces the need for servicing and prevents unnecessary downtime.

- protection against mismatching eliminates errors
- simple circuits
- with A coding for use in many general mains applications
- ready for immediate use

- convenient installation and commissioning

This item includes:



Item No.: 770-203

1

Socket; 3-pole; Cod. A; black

Item No.: 770-503/035-000

1

Strain relief housing; 3-pole; with locking clip; for 1 cable; 7.0 ... 11.5 mm; 48 mm; black

Notes

General safety information

1. Only to be used by a qualified electrician or by a person electrically instructed for the task (EIP per DIN VDE 0105-100).
2. Do not install while energized or under load.
3. Use only for its intended purpose.
4. Observe applicable national regulations, standards and directives.
5. Observe the technical specifications of the products.
6. Ensure correct polarity assignment.
7. Do not use damaged or contaminated components.
8. Observe conductor types, conductor cross-sections, strip lengths and cable diameters.
9. Insert conductors up to the stop.
10. Use only with locking lever and strain relief.
11. Use original accessories only.

To be sold only with installation instructions!

Electrical data

Ratings per	IEC/EN 60664-1		
Overvoltage category	III	III	II
Pollution degree	3	2	2
Nominal voltage	250 V	-	-
Rated impulse withstand voltage	4 kV	-	-
Rated current	25 A	-	-

Approvals per	UL 1977
Rated voltage	600 V
Rated current	23 A

General information

Note on contact resistance approx. 1 mΩ of contact resistance
 approx. 0.25 mΩ contact transition plug/
 socket

Connection Data

Clamping units	6
Total number of potentials	3

Connection 1	
Connection technology	Push-in CAGE CLAMP®
Actuation type	Operating tool Push-in
Nominal cross-section	4 mm ² / 12 AWG
Solid conductor	0.5 ... 4 mm ² / 20 ... 12 AWG
Solid conductor; push-in termination	1.5 ... 4 mm ² / 16 ... 12 AWG
Stranded conductor	0.5 ... 2.5 mm ² / 20 ... 14 AWG
Fine-stranded conductor	0.5 ... 4 mm ² / 20 ... 12 AWG
Fine-stranded conductor; with insulated ferrule	0.25 ... 1.5 mm ² / 20 ... 16 AWG
Fine-stranded conductor; with uninsulated ferrule	0.25 ... 2.5 mm ² / 20 ... 14 AWG
Fine-stranded conductor; with ferrule; push-in termination	1.5 mm ² / 16 AWG
Strip length	9 mm / 0.35 inches
Pole number	3
Connectable sheathed cable diameter	7 ... 11.5 mm

Connection 1

Conductor entry direction to mating direction 0°

Strip length (outer insulation) 48 mm

Physical data

Pin spacing	10 mm / 0.394 inches
Width	30 mm / 1.181 inches
Height	15.6 mm / 0.614 inches
Depth	77 mm / 3.031 inches

Mechanical data

Use	General mains applications
Coding	A
Variable coding	Yes
Marking	L ⊕ N
Potential marking	L ⊕ N
Mating force of a plug-in connection	approx. 20 ... 70 N (depending on pole number)
Retention force of a plug-in connection	Locked: > 80 N
Unmating force of a plug-in connection	Unlocked: approx. 20 ... 70 N (depending on pole number)
Number of mating cycles	200, without resistive load
Protection type	IP2XD; When mated and secured with a strain relief housing: IP2xC (These compact connectors are not designed for use in open, easily accessible areas!)
Suitable	for quick assembly

Plug-in connection

Contact type (pluggable connector)	Female connector/socket
Connector (connection type)	for conductor
Mismating protection	Yes
Note on mismating protection	All WINSTA® components are 100% protected against mismating when: a.) plugging different numbers of poles b.) plugging while rotated 180 c.) plugging while laterally staggered d.) plugging one pole
Locking lever	Can be retrofitted
Locking of plug-in connection	Locking lever
Note on locking system	All connectors for mounted installations (snap-in versions for lighting fixtures or devices, all types of PCB and distribution connectors) are factory-equipped with locking levers to ensure plugs and sockets are securely locked. Additional locking levers are only required for flying leads (plug/socket).
Strain relief	Strain relief house, for quick assembly

Material data

Note (material data)	Information on material specifications can be found here
Color	black
Cover color	gray
Material group	I
Insulation material (main housing)	Polyamide (PA66)
Flammability class per UL94	V0
Clamping spring material	Chrome-nickel spring steel (CrNi)
Contact material	Copper or copper alloy; surface-treated
Contact Plating	Tin
Fire load	0.37 MJ
Connector color	black
Strain relief color	black
Weight	17.6 g

Environmental requirements

Processing temperature	-5 ... +40 °C
Continuous operating temperature	-35 ... +85 °C
Note on continuous operating temperature	Insulating parts for temperatures ≤ 105 °C

Commercial data

PU (SPU)	25 pcs
Packaging type	Box
Country of origin	DE
GTIN	4055143209168
Customs tariff number	85366990990

Product Classification

UNSPSC	39121421
eCl@ss 10.0	27-44-06-05
eCl@ss 9.0	27-44-06-05
ETIM 9.0	EC002560
ETIM 10.0	EC002560
ECCN	NO US CLASSIFICATION

Environmental Product Compliance

RoHS Compliance Status	Compliant, No Exemption
------------------------	-------------------------

Approvals / Certificates

General approvals **Approvals for marine applications**



Approval	Standard	Certificate Name
cURus Underwriters Laboratories Inc.	UL 1059	E 45172

Approval	Standard	Certificate Name
LR Lloyds Register	IEC 61984	LR22429487TA

Downloads

Environmental Product Compliance

Compliance Search

Environmental Product Compliance 770-203/035-000	↓
---	-------------------

Documentation

Bid Text			
770-203/035-000	19.02.2019	xml 3.05 KB	
770-203/035-000	08.06.2015	doc 23.50 KB	
ausschreiben.de 770-203/035-000			

CAD/CAE-Data

CAD data	
2D/3D Models 770-203/035-000	

1 Compatible Products

1.1 System counterpart

1.1.1 Cable assembly



Item No.: 771-9993/206-101
pre-assembled connecting cable; Eca; Plug/open-ended; 3-pole; Cod. A; H05VV-F 3G 1.5 mm²; 1 m; 1,50 mm²; black

Item No.: 771-9993/006-101
pre-assembled interconnecting cable; Eca; Socket/plug; 3-pole; Cod. A; H05VV-F 3G 1.5 mm²; 1 m; 1,50 mm²; black

1.1.2 Distribution box



Item No.: 899-631/181-000
Distribution box; 230 V + DALI; 2 inputs; 6 outputs; Cod. A, I; MINI, MIDI; black



Item No.: 899-631/405-000
Distribution box; 230 V + SMI; 2 inputs; 6 outputs; Cod. A, B; MINI, MIDI; black



Item No.: 899-631/315-000
Distribution box; Cable and device protection; 1 input; 4 outputs; Cod. A; MIDI; black



Item No.: 899-631/305-000
Distribution box; Crossover switching; 1 input; 5 outputs; Cod. A, B, S; MIDI; black



Item No.: 899-631/309-000
Distribution box; Motion/presence detector; 1 input; 3 outputs; Cod. A, S; MIDI; black



Item No.: 899-631/180-000
Distribution box; Motion/presence detector; 1 input; 5 outputs; Cod. A; MIDI; black



Item No.: 899-631/386-000
Distribution box; Series switching; 1 input; 7 outputs; Cod. A, S; MIDI; black



Item No.: 899-631/334-000
Distribution box; Single-phase current (230 V); 1 input; 13 outputs; Cod. A; MIDI; black



Item No.: 899-631/476-000
Distribution box; Single-phase current (230 V); 1 input; 4 outputs; Cod. A; MIDI; black



Item No.: 899-631/104-000
Distribution box; Single-phase current (230 V); 1 input; 7 outputs; Cod. A; MIDI; black



Item No.: 899-631/311-000
Distribution box; Single-phase current (230 V); 2 inputs; 6 outputs; Cod. A, P; MIDI; black



Item No.: 899-631/327-000
Distribution box; Single-phase current (230 V); 2 inputs; 6 outputs; Cod. A; MIDI; black



Item No.: 899-631/363-000
Distribution box; Single-pole switch circuit; 1 input; 5 outputs; Cod. A, S; MIDI; black



Item No.: 899-632/101-000
Distribution box; Surge switch circuit; 1 input; 4 outputs; Cod. A, S; MIDI; black



Item No.: 899-632/138-000
Distribution box; Surge switch circuit; 1 input; 4 outputs; Cod. A, S; MIDI; black



Item No.: 899-631/308-000
Distribution box; Two-way circuit; 1 input; 5 outputs; Cod. A, S; MIDI; black



Item No.: 899-631/189-000
Distribution box; Two-way circuit; 1 input; 7 outputs; Cod. A, S; MIDI; black

1.1.3 Distribution connector



Item No.: 770-607
3-way distribution connector; 3-pole; Cod. A; 1 input; 3 outputs; black



Item No.: 770-608
5-way distribution connector; 3-pole; Cod. A; 1 input; 5 outputs; outputs on both sides; black



Item No.: 770-638
Distribution connector for switches; Single-pole and throttle two-way circuit; 3-pole; Cod. A/S; 1 input; 5 outputs; black



Item No.: 770-637
Distribution connector for switches; Single-pole switch and series circuit; 3-pole; Cod. A/S; 1 input; 5 outputs; black



Item No.: 770-633
h-distribution connector; 3-pole; Cod. A; 1 input; 2 outputs; 2 locking levers; black



Item No.: 770-635
h-distribution connector; 3-pole; Cod. A; 1 input; 2 outputs; outputs on both sides; 3 locking levers; for flying leads; black



Item No.: 770-634
h-distribution connector; 3-pole; Cod. A; 1 input; 2 outputs; outputs on one side; 2 locking levers; black



Item No.: 770-636
h-distribution connector; 3-pole; Cod. A; 1 input; 2 outputs; outputs on one side; 3 locking levers; for flying leads; black



Item No.: 770-606
T-distribution connector; 3-pole; Cod. A; 1 input; 2 outputs; 2 locking levers; black



Item No.: 770-615
T-distribution connector; 3-pole; Cod. A; 1 input; 2 outputs; 3 locking levers; for flying leads; black

1.1.4 Male connector/plug



Item No.: 770-813/011-000
Plug for PCBs; angled; 3-pole; Cod. A; black



Item No.: 770-813
Plug for PCBs; straight; 3-pole; Cod. A; black



Item No.: 770-213
Plug; 3-pole; Cod. A; black



Item No.: 770-213/002-000
Plug; with direct ground contact; 3-pole; Cod. A; 4,00 mm²; black



Item No.: 770-113
Plug; with strain relief housing; 3-pole; Cod. A; 4,00 mm²; black



Item No.: 770-213/035-000
Plug; with strain relief housing; 3-pole; Cod. A; 4,00 mm²; black



Item No.: 770-713
Snap-in plug; 3-pole; Cod. A; black



Item No.: 770-713/007-000
Snap-in plug; with direct ground contact; 3-pole; Cod. A; black

1.2 Required Accessories

1.2.1 Locking system

1.2.1.1 Locking system



Item No.: 770-101
Locking lever; for flying leads; for manual operation; black



Item No.: 770-121
Locking lever; for flying leads; for manual operation; white



Item No.: 770-111
Locking lever; for flying leads; for tool operation; black



Item No.: 770-131
Locking lever; for flying leads; for tool operation; white

1.3 Optional Accessories

1.3.1 Cover

1.3.1.1 Cover



Item No.: 770-201
Lockout cap; 12-pole, separable; for sockets; Plastic; black



Item No.: 770-221
Lockout cap; 12-pole, separable; for sockets; Plastic; white

1.3.2 Marking

1.3.2.1 Marker



Item No.: 770-450/000-006
Marker card; Plastic; blue



Item No.: 770-450/000-001
Marker card; Plastic; green



Item No.: 770-450/000-012
Marker card; Plastic; orange



Item No.: 770-450/000-005
Marker card; Plastic; red



Item No.: 770-450
Marker card; Plastic; white



Item No.: 770-450/000-002
Marker card; Plastic; yellow

1.3.3 Shield termination

1.3.3.1 Shield termination



Item No.: 770-523
Shield connecting plate; 3-pole; for sockets and plugs; silver-colored

1.3.4 Tool

1.3.4.1 Operating tool



Item No.: 770-383
Operating tool; 3-way; green



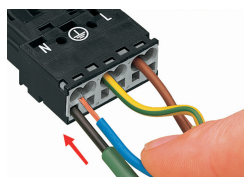
Item No.: 210-719
Operating tool; Blade: 2.5 x 0.4 mm; with a partially insulated shaft

Installation Notes

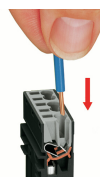
Conductor termination



1. Strip length, outer insulation = 35 mm (2-pole), 55 mm (3- to 5-pole)
2. Strip length = 9 mm
3. Extended ground conductor = 8 mm



To terminate fine-stranded conductors, open the clamping unit via screwdriver (2.5 mm blade width) and insert a stripped conductor until it hits the backstop.

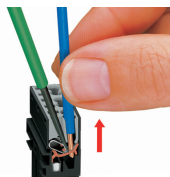


Insert the stripped solid conductor until it hits the backstop.



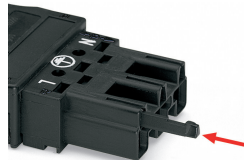
To terminate fine-stranded conductors, open the clamping unit via screwdriver (2.5 mm blade width) and insert a stripped conductor until it hits the backstop.

Conductor removal



To remove the conductor, actuate the clamp via screwdriver (2.5 mm blade width) and pull out the conductor.

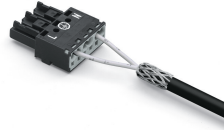
Coding



Simply cut off the coding pin from the socket.

Insert coding pin into plug (break first) until it engages.

Shield termination



Connector with shield termination

Apply the shield to the sheathed cable.

Strip length, outer insulation = 55 mm

Shield length = 10 mm

Push the shield connecting plate into the connector until fully inserted.

First insert the wired connector into a strain relief housing, then snap cover and tighten screw.