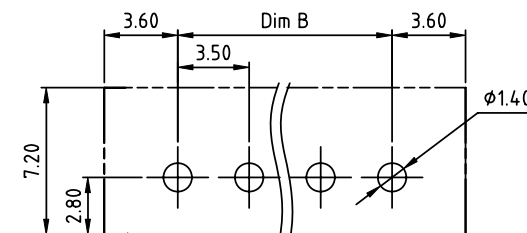
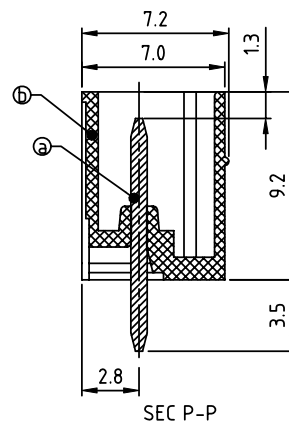
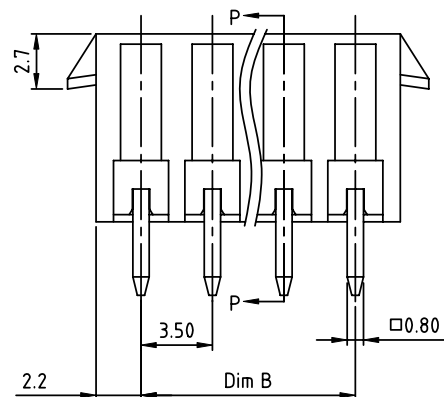
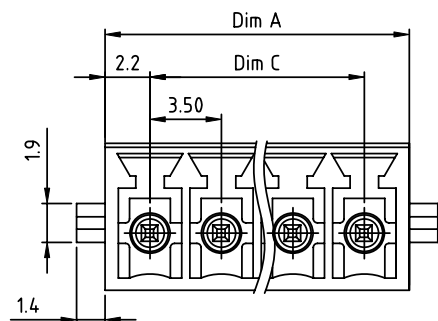



PRODUCT NUMBER	PITCH
0Qxx12x003J0G	3.50 mm



RECOMMENDED P.C.B LAYOUT  
TOP VIEW

Material:

- Item ③ Male contact pin: Copper Tin plated
- Item ⑤ Terminal housing: Thermoplastic (UL94 V-0)

- Electrical: cULus /VDE
- Voltage rating: 300V/300V
  - Current rating: 10A/10.5A
  - Withstanding Voltage: 1.6 KV/2.5KV
  - Operating temperature: -40°C to +115°C
  - Soldering temperature: 260°C±5°C/5 Sec
  - Safety Approval: 

DIMENSION

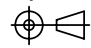
Dim A	(N-1)×3.5+4.4
Dim B&C	(N-1)×3.5

N= NUMBER OF POLES

Poles	Tolerance
2P-6P	±0.15
7P-12P	±0.20
13P-18P	±0.25
19P-24P	±0.30

PART NO.: 0Q xx 1 2 x 0 03J0 G

No. of poles	Body Color	RoHS compliant (lead<4%) In copper Alloy
02 2 poles	0 Black (RAL9005)	
03 3 poles	2 Red (RAL3001/D)	
...	3 Orange(RAL2011/P)	
...	4 Yellow(RAL1018/A)	
24 24 poles	5 Green(RAL6018/T)	
	6 Blue (RAL5015/A)	
	8 Grey(RAL7035/D)	
	9 White(RAL1102)	
	C Green(RAL6018/U)	

mat'l. code				surface ASME Y14.5	tolerance ASME Y14.5	projection	product family		
ltr	ecn	no	dr	date	tolerances unless otherwise specified		TERMINAL BLOCK		
					angles $\frac{B}{E}$	$X \pm 0.5$	title TERMINAL BLOCK PLUGGABLE SOCKET, WITH LATCH, VERTICAL		
					$X' \pm 1'$	$X.X \pm 0.3$			
						$X.XX \pm 0.1$	scale	sheet 1 of 1	
					dr	HANKE FENG	032614	size	
					enr	HANKE FENG	032614	A4	
					chr	SHI JUN	032614	CUSTOMER Drawing	
					appd	SHI JUN	032614		
sheet index	revision	A							