



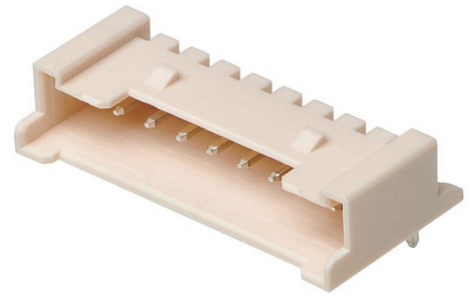
Part Number : [353631160](#)

Product Description : 2.00mm Pitch Sherlock Wire-to-Board Header, Right-Angle, with Positive Lock, 11 Circuits

Series Number : 35363

Status : Not Recommended For New Design

Product Category : PCB Headers and Receptacles



Documents and Resources

Drawings

[353631160_sd.pdf](#)

[353631160_stp.zip](#)


[Symbol and Footprint \(Multi-Format\)](#)

Specifications

[PS-35507-001-001.pdf](#)

Product Environment Compliance

Compliance

| | |
|--------------------|---|
| GADSL/IMDS | Compliant with Exemption 44 |
| China RoHS |  per SJ/T 11365-2006 |
| EU ELV | Not Relevant |
| Low-Halogen Status | Low-Halogen per IEC 61249-2-21 |
| REACH SVHC | Not Contained per D(2024)6225-DC (07 Nov 2024) |
| EU RoHS | Compliant per EU 2015/863 |

Compliance Statements

- EU RoHS
- REACH SVHC
- Low-Halogen

Industry Documents

- IPC 1752A Class C
- IPC 1752A Class D

- Molex Product Compliance Declaration
- IEC-62474
- chemSHERPA (xml)

Substances of Interest

- PFAS

EU RoHS Certificate of Compliance

Additional Product Compliance Information

Part Details

General

| | |
|----------------|--|
| Status | Not Recommended For New Design |
| Category | PCB Headers and Receptacles |
| Series | 35363 |
| Description | 2.00mm Pitch Sherlock Wire-to-Board Header, Right-Angle, with Positive Lock, 11 Circuits |
| Application | Wire-to-Board |
| Component Type | PCB Header |
| Product Name | Sherlock |
| UPC | 822348260614 |

Agency

| | |
|-----|---------|
| CSA | LR19980 |
| UL | E29179 |

Electrical

| | |
|-------------------------------|------|
| Current - Maximum per Contact | 2.0A |
| Voltage - Maximum | 125V |

Physical

| | |
|--------------------------------|---------|
| Breakaway | No |
| Circuits (Loaded) | 11 |
| Circuits (maximum) | 11 |
| Color - Resin | Natural |
| Durability (mating cycles max) | 30 |

| | |
|--------------------------------|--------------------|
| First Mate / Last Break | No |
| Glow-Wire Capable | No |
| Guide to Mating Part | No |
| Keying to Mating Part | No |
| Lock to Mating Part | Yes |
| Material - Plating Mating | Tin |
| Material - Plating Termination | Tin |
| Material - Resin | Nylon |
| Net Weight | 0.720/g |
| Number of Rows | 1 |
| Orientation | Right Angle |
| Packaging Type | Bag |
| PCB Locator | No |
| PCB Retention | Yes |
| PCB Thickness - Recommended | 1.60mm |
| PC Tail Length | 3.20mm |
| Pitch - Mating Interface | 2.00mm |
| Polarized to Mating Part | Yes |
| Polarized to PCB | No |
| Shrouded | Partially Shrouded |
| Stackable | No |
| Temperature Range - Operating | -40° to +105°C |
| Termination Interface Style | Through Hole |

Mates With / Use With

Mates with Part(s)

| Description | Part Number |
|------------------------------|--------------|
| Sherlock Receptacle Housings | <u>35507</u> |

This document was generated on May 19, 2026