

**Part Number :** [2167000109](#)

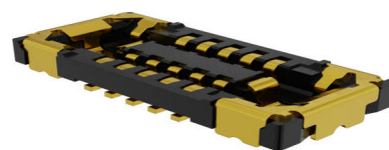
**Product Description :** SlimStack Board-to-Board Receptacle, 0.35mm Pitch, ACB6+ Series, 0.60mm Mated Height, 1.90mm Mated Width, 10 Circuits, 8 Reels/Carton

**Series Number :** 216700

**Status :** Active

**Product Category :** Board-to-Board Connectors

---



## Documents and Resources

### Drawings

[2167000109\\_sd.pdf](#)

### 3D Models and Design Files

[STEP AP242](#)

[SOLIDWORKS](#)

[Creo](#)

[2167000109.dxf](#)

### Specifications

[2167000000-AS-000.pdf](#)

[2167000000-SPK-000.pdf](#)

[2167000000-SPK-020.pdf](#)

[2167000000-PS-000.pdf](#)

---

## Product Environment Compliance

### Compliance

GADSL/IMDS	Not Relevant
China RoHS	per SJ/T 11365-2006
EU ELV	Not Relevant
Low-Halogen Status	Low-Halogen per IEC 61249-2-21
REACH SVHC	Not Contained per D(2025)7771-DC (04 Feb 2026)
EU RoHS	Compliant per EU 2015/863

### [Compliance Statements](#)

- EU RoHS

- REACH SVHC
- Low-Halogen

#### Industry Documents

- IPC 1752A Class C
- IPC 1752A Class D
- Molex Product Compliance Declaration
- IEC-62474
- chemSHERPA (xml)

#### Substances of Interest

- PFAS

#### EU RoHS Certificate of Compliance

#### Additional Product Compliance Information

## Part Details

### General

Status	Active
Category	Board-to-Board Connectors
Series	0.35, ACB6+
Description	SlimStack Board-to-Board Receptacle, 0.35mm Pitch, ACB6+ Series, 0.60mm Mated Height, 1.90mm Mated Width, 10 Circuits, 8 Reels/Carton
Application	Board-to-Board
Component Type	Receptacle
Product Name	SlimStack
UPC	195842745728

### Electrical

Current - Maximum per Contact	0.3A, 5.0A
Voltage - Maximum	60V AC (RMS)/DC

### Physical

Breakaway	No
Circuits (Loaded)	10
Circuits (maximum)	10
Color - Resin	Black

Durability (mating cycles max)	30
Glow-Wire Capable	No
Mated Height	0.60mm
Mated Width	1.90mm
Material - Metal	Copper Alloy
Material - Plating Mating	Gold
Material - Plating Termination	Gold
Material - Resin	Liquid Crystal Polymer (LCP)
Net Weight	7.154/mg
Number of Rows	2
Orientation	Vertical
Packaging Type	Embossed Tape on Reel
PCB Locator	No
PCB Retention	Yes
Pitch - Mating Interface	0.35mm
Pitch - Termination Interface	0.35mm
Plating min - Mating	0.100µm
Plating min - Termination	0.050µm
Polarized to Mating Part	No
Polarized to PCB	No
Temperature Range - Operating	-40° to +85°C
Termination Interface Style	Surface Mount

---

## Mates With / Use With

### Mates with Part(s)

Description	Part Number
SlimStack Board-to-Board Plug, 0.35mm Pitch, ACB6+ Series, 0.60mm Mated Height, 1.90mm Mated Width, 10 Circuits, 8 Reels/ Carton	<u>2167010109</u>

---

This document was generated on Jun 24, 2026