



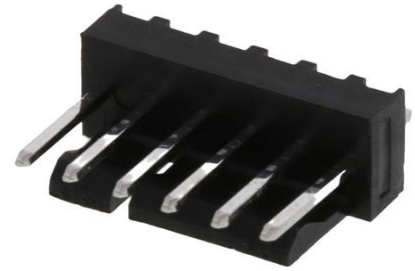
Part Number : [1718563006](#)

Product Description : 2.54mm Pitch, KK 254 RPC Vertical Header with Friction Lock, Tin (Sn) Plating, Pin Length 12.95mm, Tape and Reel, 6 Circuits

Series Number : 171856

Status : Active

Product Category : PCB Headers and Receptacles



Documents and Resources

Drawings

[1718563006_sd.pdf](#)

[PK-171856-0001-000.pdf](#)

3D Models and Design Files

[STEP AP242](#)

[SOLIDWORKS](#)

[Creo](#)

[Symbol and Footprint \(Multi-Format\)](#)

[SYM-171856-0006-001.zip](#)


Specifications

[PS-171856-0001-001.pdf](#)

[PS-171856-0002-001.pdf](#)

Product Environment Compliance

Compliance

GADSL/IMDS	Not Relevant
China RoHS	 per SJ/T 11365-2006
EU ELV	Not Relevant
Low-Halogen Status	Low-Halogen per IEC 61249-2-21
REACH SVHC	Not Contained per D(2025)6375-DC (05 Nov 2025)
EU RoHS	Compliant per EU 2015/863

Compliance Statements

- EU RoHS
- REACH SVHC
- Low-Halogen

Industry Documents

- IPC 1752A Class C
- IPC 1752A Class D
- Molex Product Compliance Declaration
- IEC-62474
- chemSHERPA (xml)

Substances of Interest

- PFAS

EU RoHS Certificate of Compliance

Additional Product Compliance Information

Part Details

General

Status	Active
Category	PCB Headers and Receptacles
Series	171856
Description	2.54mm Pitch, KK 254 RPC Vertical Header with Friction Lock, Tin (Sn) Plating, Pin Length 12.95mm, Tape and Reel, 6 Circuits
Application	Board-to-Board, Power, Signal, Wire-to-Board
Comments	See Product Specification for maximum current rating by AWG; See Product Specification for operating temperature range by material.
Component Type	PCB Header
Product Name	KK 254
UPC	887191519890

Agency

CSA	LR19980
UL	E29179

Electrical

Current - Maximum per Contact	4.0A
Voltage - Maximum	500V

Physical

Breakaway	No
Circuits (Loaded)	6
Circuits (maximum)	6
Color - Resin	Black
Durability (mating cycles max)	25
First Mate / Last Break	No
Flammability	94V-1
Glow-Wire Capable	No
Guide to Mating Part	No
Keying to Mating Part	None
Lock to Mating Part	Yes
Material - Metal	Brass
Material - Plating Mating	Matte Tin
Material - Plating Termination	Matte Tin
Material - Resin	High Temperature Thermoplastic
Net Weight	0.678/g
Number of Rows	1
Orientation	Vertical
Packaging Type	Embossed Tape on Reel
PCB Locator	No
PCB Retention	None
PCB Thickness - Recommended	1.60mm
PC Tail Length	2.34mm
Pitch - Mating Interface	2.54mm
Plating min - Mating	1.524µm
Plating min - Termination	1.524µm
Polarized to Mating Part	Yes
Robotic Placement	Pick and Place Cap
Shrouded	Partial
Stackable	No

Temperature Range - Operating	-40° to +105°C, -40° to +80°C
Termination Interface Style	Through Hole

Solder Process Data

Max-Duration	30
Lead-Free Process Capability	SMC&WAVE
Max-Cycle	3
Max-Temp	260

Mates With / Use With

Mates with Part(s)

Description	Part Number
KK 254 Single Row Crimp Housings	<u>2695</u>
KK 254 PC Board Connector	<u>4455</u>

This document was generated on Dec 16, 2025