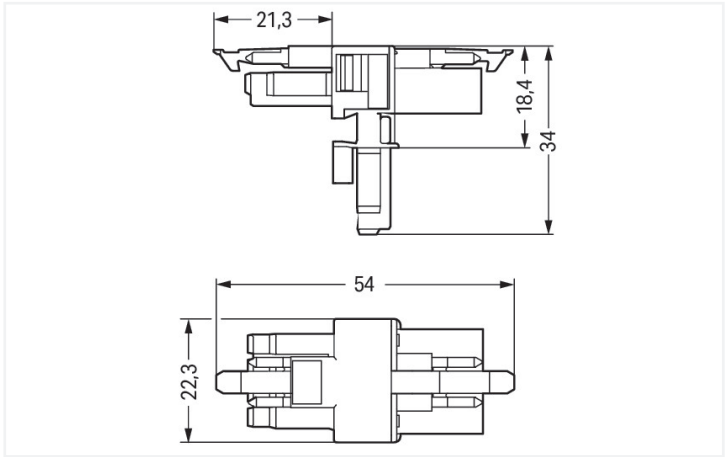




Color: ■ black



Dimensions in mm

Distribution connector WINSTA® MINI 4-pole

Use effective pluggable connections instead of laborious screw connections: With the WINSTA® MINI distribution connector with locking latch. The pluggable installation connectors with spring pressure connection technology function entirely without screw connections. They allow resource-efficient, error-free installation in a large number of possible uses. For greater protection in electrical installations, the pluggable installation connector is provided with mechanical protection against mismating. The WINSTA® MINI pluggable installation connector with A coding in white or black is normally used for general mains applications in power distribution. Particularly if only limited space is available, our smallest pluggable connection system, WINSTA® MINI, consistently displays its advantageous properties. It is very compact, and, with Push-in CAGE CLAMP® spring pressure connection technology, it additionally saves time, since the installation is low-maintenance and requires no screw connections.

Lower costs through fast commissioning and elimination of service expenses – solutions from WINSTA® MINI

WINSTA® is the pluggable connection system that is optimally tailored to the strict requirements of electrical installation. It ensures error-free installation of cables and components, quickly and reliably. Choose quality and durability – with protection against mismating from WAGO makes the electrical installation of electrical components substantially easier.

- protection against mismating eliminates errors
- easy tool-free operation, a wide range of coding options
- with A coding for use in a large number of general mains applications
- exact dimensions
- convenient installation and commissioning

Electrical data								
Ratings per		IEC/EN 60664-1			Approvals per		UL 1977	
Overvoltage category		III	III	II	Rated voltage		600 V	
Pollution degree		3	2	2	Rated current		12 A	
Nominal voltage		400 V	-	-				
Rated surge voltage		6 kV	-	-				
Rated current		16 A	-	-				
General information								
Note on contact resistance		approx. 1 mΩ of contact resistance approx. 0.25 mΩ contact transition plug/ socket						



Connection data		
Total number of potentials	4	Connection 1
PE function	Preceding PE contact	Pole number 4

Physical data		
Pin spacing		4.4 mm / 0.173 inches
Width		22.3 mm / 0.878 inches
Height		34 mm / 1.339 inches
Depth		54 mm / 2.122 inches

Mechanical data		
Use		General mains applications
Coding		A
Variable coding		No
Marking		N ⊕ 2/L 1/L'
Potential marking		N ⊕ 2/L 1/L'
Mating force of a plug-in connection		Approx. 20 ... 70 N (depending on pole number)
Retention force of a plug-in connection		When locked: > 80 N
Unmating force of a plug-in connection		Unlocked: approx. 20 ... 70 N (depending on pole number)
Number of mating cycles		200, without resistive load
Type of distribution box		T-distribution connector
Protection type		IP20; IP40 when mated

Plug-in connection		
Mismating protection		Yes
Note on mismating protection		All WINSTA® components are 100% protected against mismating when: a.) plugging different numbers of poles b.) plugging while rotated 180 c.) plugging while laterally staggered d.) plugging one pole
Locking lever		Yes
Locking of plug-in connection		Locking lever
Note on locking system		All connectors for mounted installations (snap-in versions for lighting fixtures or devices, all types of PCB and distribution connectors) are factory-equipped with locking levers to ensure plugs and sockets are securely locked. Additional locking levers are only required for flying leads (plug/socket).
Number of locking levers		2

Material data		
Note (material data)		Information on material specifications can be found here
Color		black
Material group		I
Insulation material (main housing)		Polyamide (PA66)
Flammability class per UL94		V0
Contact material		Copper or copper alloy; surface-treated
Contact Plating		Tin
Fire load		0.225 MJ
Weight		10.2 g





Environmental requirements	
Processing temperature	-5 ... +40 °C
Continuous operating temperature	-35 ... +85 °C
Note on continuous operating temperature	Insulating parts for temperatures ≤ 105 °C

Commercial data	
Product Group	20 (Winsta)
PU (SPU)	25 pcs
Packaging type	Box
Country of origin	DE
GTIN	4050821229520
Customs tariff number	85366990990




Product classification	
UNSPSC	39121406
eCl@ss 10.0	27-44-06-03
eCl@ss 9.0	27-44-06-03
ETIM 9.0	EC002567
ETIM 8.0	EC002567
ECCN	NO US CLASSIFICATION

Environmental Product Compliance	
RoHS Compliance Status	Compliant, No Exemption

Approvals / Certificates

General approvals		Declarations of conformity and manufacturer's declarations	
 			
Approval	Standard	Certificate Name	
CCA DEKRA Certification B.V.	EN 61535	71-123231	
CCA DEKRA Certification B.V.	IEC 61535	NL-85020	
cURus Underwriters Laboratories Inc.	UL 1977	E45171	
Approval	Standard	Certificate Name	
EU-Declaration of Confor- mity WAGO GmbH & Co. KG		-	
UK-Declaration of Confor- mity WAGO GmbH & Co. KG		-	

Approvals for marine applications

  		
Approval	Standard	Certificate Name
ABS American Bureau of Ship- ping	Steel Vessel Rules	19-HG1869855-PDA
DNV GL Det Norske Veritas, Ger- manischer Lloyd	-	TAE00001Z6
LR Lloyds Register	EN 61535	08/20047 (E2)



Downloads

Environmental Product Compliance

Compliance Search			
Environmental Product Compliance 890-626			↓

Documentation

Bid Text			
890-626	19.02.2019	xml 2.71 KB	↓
890-626	03.12.2014	doc 22.50 KB	↓

CAD/CAE-Data

CAD data	
2D/3D Models 890-626	
↓	

CAE data	
WSCAD Universe 890-626	
↓	

Installation Notes

Installation



Secure the mounting plate via pins.