



Connectors > Automotive Connectors > Automotive Connector Accessories > Automotive Connector Caps & Covers >

LEAVYSEAL Connector Backshells



Protection & Strain Relief Accessory Type: **Cover - Cable Exit**

Cable Exit Angle: **90°**

Strain Relief: **With**

Primary Product Color: **Black**

Primary Product Material: **PA**

[All LEAVYSEAL Connector Backshells \(13\)](#)

Features

Industry Standards

UL Flammability Rating	UL 94HB
------------------------	---------

Dimensions

Compatible Cable Bundle Diameter Range	18.6 mm[.732 in]
--	------------------

Packaging Features

Packaging Method	Box
Packaging Quantity	200

Other

Serviceable	Yes
EU RoHS Compliance	Compliant
EU ELV Compliance	Compliant

Usage Conditions

Compatible With Connector Style	Housing For Male Terminals
---------------------------------	----------------------------



Operating Temperature (Max)	80 °C, 105 °C, 90 °C, 100 °C, 85 °C, 75 °C, 70 °C, 110 °C, 120 °C[212 °F]
Operating Temperature Range	-40 – 120 °C[-40 – 248 °F]

Product Type Features

Protection & Strain Relief Accessory Type	Cover - Cable Exit
---	--------------------

Body Features

Cable Exit Angle	90°
Primary Product Color	Black
Primary Product Material	PA

Mechanical Attachment

Strain Relief	With
---------------	------

Configuration Features

Number of Positions	21
---------------------	----

Product Compliance

For compliance documentation, visit the product page on TE.com>


EU RoHS Directive 2011/65/EU	Compliant
EU ELV Directive 2000/53/EC	Compliant
China RoHS 2 Directive MIIT Order No 32, 2016	No Restricted Materials Above Threshold
EU REACH Regulation (EC) No. 1907/2006	Current ECHA Candidate List: JUNE 2024 (241) Candidate List Declared Against: JUNE 2024 (241) Does not contain REACH SVHC
Halogen Content	BFR/CFR/PVC Free, but Br/Cl >900 ppm in other sources.
Solder Process Capability	Not applicable for solder process capability

Product Compliance Disclaimer

This information is provided based on reasonable inquiry of our suppliers and represents our current actual knowledge based on the information they provided. This information is subject to change. The part numbers that TE has identified as EU RoHS compliant have a maximum concentration of 0.1% by weight in homogenous materials for lead, hexavalent chromium, mercury, PBB, PBDE, DBP, BBP, DEHP, DIBP, and 0.01% for cadmium, or qualify for an exemption to these limits as defined in the Annexes of Directive 2011/65/EU (RoHS2). Finished electrical and electronic equipment products will be CE marked as required by Directive 2011/65/EU. Components may not be CE marked. Additionally, the part numbers that TE has identified as EU ELV compliant have a maximum concentration of 0.1% by weight in homogenous materials for lead, hexavalent chromium, and mercury, and 0.01% for cadmium, or qualify for an exemption to these limits as defined in the Annexes of Directive 2000/53/EC (ELV). Regarding the REACH Regulation, the information TE provides on SVHC in articles for this part number is based on the latest European Chemicals Agency (ECHA) 'Guidance on requirements for substances in articles' posted at this URL: <https://echa.europa.eu/guidance-documents/guidance-on-reach>




Compatible Parts



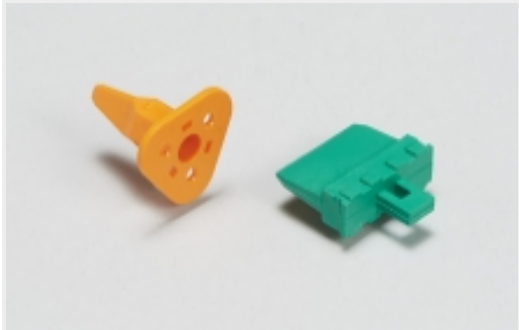
TE Part # CAT-L489-CH8172
LEAVYSEAL Connector Housings

Also in the Series


LEAVYSEAL




Automotive Connector Caps & Covers (19)




Automotive Connector Locks & Position Assurance(4)




Automotive Headers(17)




Automotive Housings(91)



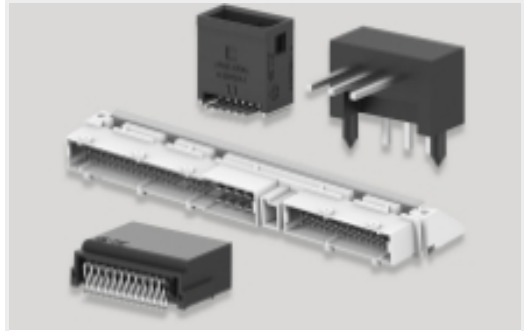
Connector Caps & Covers(1)



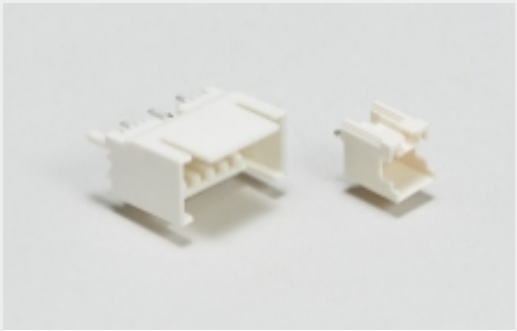
Insertion & Extraction Tools(5)



Other Automotive Connector Accessories(15)



PCB Headers & Receptacles(17)



Wire-to-Board Headers & Receptacles (17)

Customers Also Bought



TE Part #NB14604001
VERSAFIT-3/8-9-FSP



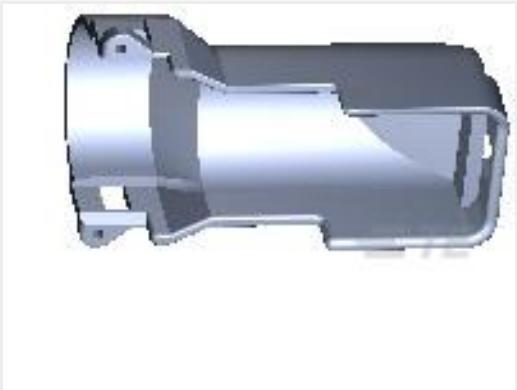
TE Part #CAT-T4827-T273
TIMER, RECEPTACLE AND TAB



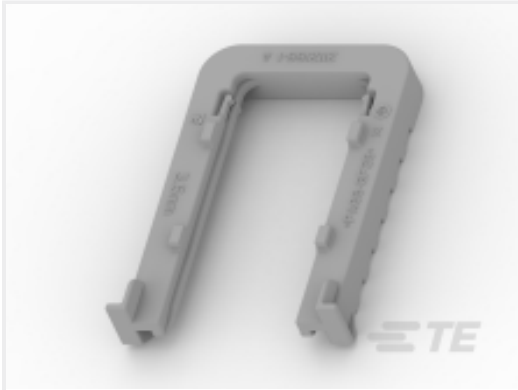
TE Part #CAT-L489-CH8172
LEAVYSEAL Connector Housings



TE Part #CAT-AM705-CH8173
AMP Unsealed Connector Housing



TE Part #9-1394050-1
COVER F.21P REC-HSG



TE Part #2112166-3
SLIDE, FOR 21POS.



TE Part #1-966096-1
MOS ABDECKKAPPE 18P

Documents

Product Drawings

COVER,90,FOR 21POS.

English

CAD Files

Customer View Model

ENG_CVM_CVM_2112167-1_A.2d_dxf.zip

English

3D PDF

3D

Customer View Model

ENG_CVM_CVM_2112167-1_A.3d_igs.zip

English

Customer View Model

ENG_CVM_CVM_2112167-1_A.3d_stp.zip

English

By downloading the CAD file I accept and agree to the [Terms and Conditions](#) of use.

Datasheets & Catalog Pages

LEAVYSEAL CONNECTORS

English

ICT Terminals and Connectors Catalogue

English

CONNECTOR SELECTOR

English

Product Specifications



Application Specification

German