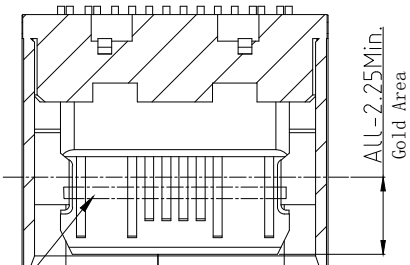
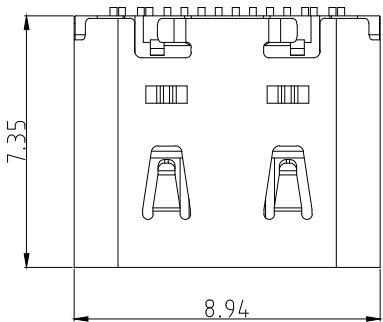


This document is the property of Amphenol Corporation and is delivered on the express condition that it is not to be disclosed, reproduced or used, in whole or in part, for manufacture or sale by anyone other than Amphenol Corporation without its prior consent, & that no right is granted to disclose or to use any information in this document.

CUSTOMER DRAWING

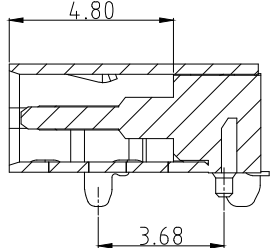
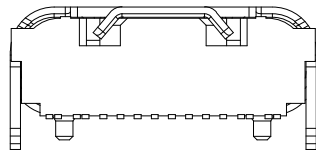
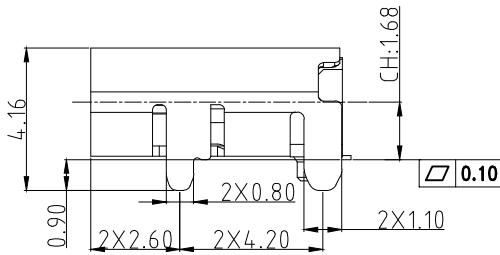
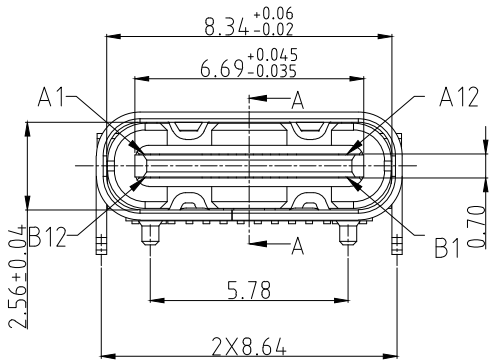
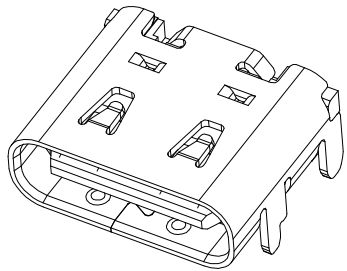
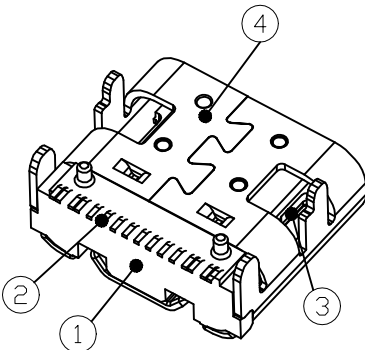
REVISIONS

SYM	ECN	DESCRIPTION	DATE	APPROVED
1		NEW RELEASE	2020.01.02	Tom
2		Add Mating Gold Area Dimensions	2020.03.06	Tom
3		Cancel escape slot	2020.06.24	Tom
4		Add PCB Edge Dimensions	2020.07.10	Tom

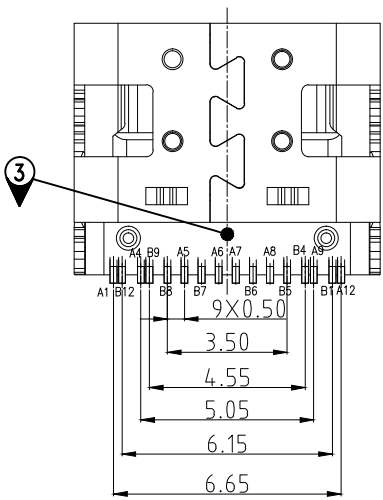


Plug contact area

SECTION B-B



SECTION A-A



USB TYPE-C PIN ASSIGNMENTS:

A1	A2	A3	A4	A5	A6	A7	A8	A9	A10	A11	A12
GND			Vbus	CC1	D+	D-	SBU1	Vbus			GND
GND			Vbus	SBU2	D-	D+	CC1	Vbus			GND
B12	B11	B10	B9	B8	B7	B6	B5	B4	B3	B2	B1

4	SHELL	1	STAINLESS STEEL	50u" NICKEL OVERALL.
3	MID PLATE	1	STAINLESS STEEL	50u" NICKEL OVERALL.
2	TERMINAL	1	COPPER ALLOY	MATING SIDE:Gold Flash; SOLDER TAIL:Gold Flash,50u" NICKEL OVERALL.
1	MAIN HOUSING	1	HIGH TEMPERATURE	
ITEM	DESCRIPTION	Q'TY	MATERIAL	FINISH

BILL OF MATERIAL

UNLESS OTHERWISE SPECIFIED TOLERANCES		APPROVAL		DATE
	U.S.	DRAWN	Allan.Lef	07/10/20
	METRIC	CHECKED	Michael.Qin	07/10/20
.X	+/-	CHECKED	Michael.Qin	
.XX	+/-			
.XXX	+/-			
FRACTIONS	+/-			
ANGLES	+/-			
FOR MATERIALS AND FINISHES SEE NOTES		DRAWING FILE :		
REMOVE SHARP EDGES		ANGLE OF PROJECTION		
DIMENSIONS		TITLE		
U.S.	INCHES	Customer Drawing For		
(METRIC)	(MM)	USB TYPE C 2.0 Top Mount		
		SIZE		REV.
		A3		4
		DRAWING NO.		
		C12402012		
		SCALE		
		NONE		
		SHEET		1 OF 2

CUSTOMER DRAWING

REVISIONS

SYM	ECN	DESCRIPTION	DATE	APPROVED
1		NEW RELEASE	2020.01.02	Tom

NOTES:

- 1.Material : See Bill Of Material
- 2.Waterproof : No Waterproof
- 3.Electrical Characteristics:
Low Level Contact Resistance: 40m Ω Max
Insulation resistance :100M Ω Min
Dielectric Withstanding Voltage:100 VAC
Contact Current Rating :5A Max
- 4.Mechanical Characteristics:
Insertion Force: 5~20N
Extraction Force: 8~20N
After Durability Extraction Force: 6~20N
- 5.Durability: 10000 Cycles
- 6.Packaging Type: Carrier Reel.
- 7.Material Should Be Fulfilled Amphenol SPEC# SSN002
And Customer Requirements, For HALOGEN FREE Products,
Also Need To Meet SSN004
- 8.Part Number:12402012E212A

Plating Spec: _____
E2: Mating Area: Gold flash
Solder Area: Gold flash
50u"Min Nickel Under Plating Over All

A:HF
Package Spec.
2:Reel
Date Code Description
1:Without D/C



Amphenol

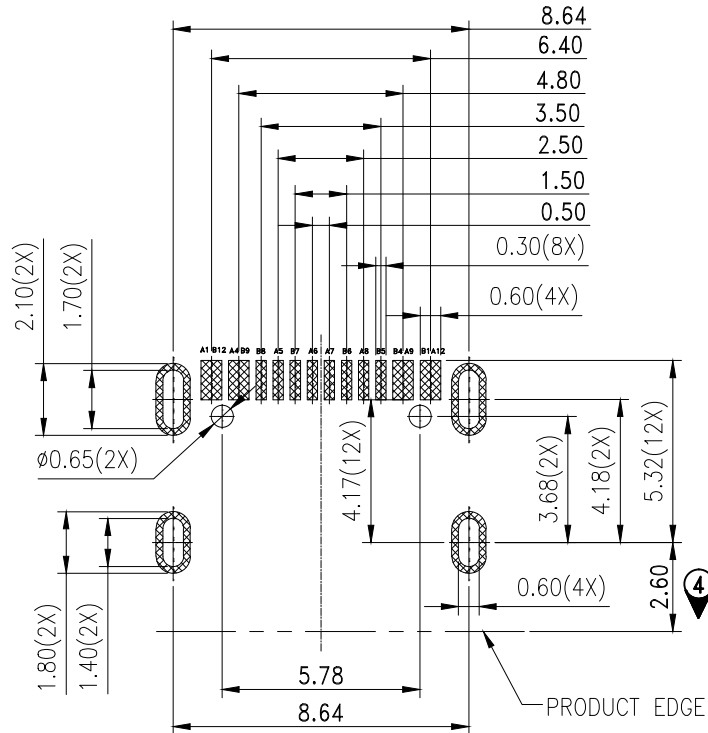
Amphenol East Asia Limited

TITLE
Customer Drawing For
USB TYPE C 2.0 Top Mount

SIZE	DRAWING NO.	REV.
A3	C12402012	4
SCALE	NONE	SHEET 2 OF 2

UNLESS OTHERWISE SPECIFIED TOLERANCES	APPROVAL	DATE
U.S. METRIC	DRAWN Allan.Lel	07/10/20
.X +/- 0.50	CHECKED Michael.Qin	07/10/20
.XX +/- 0.15	CHECKED Michael.Qin	
.XXX +/- 0.10		
FRACTIONS +/- 3"	DRAWING FILE :	
ANGLES +/-		
FOR MATERIALS AND FINISHES SEE NOTES	ANGLE OF PROJECTION	
REMOVE SHARP EDGES		
DIMENSIONS		
U.S. INCHES		
(METRIC) (MM)		

	REEL	CARTON
CONNECTOR (PCS)	800	8000



RECOMMENDED PCB LAYOUT(TOP VIEW)

THICKNESS 0.80MM;DEFAULT TOLERANCE:±0.05

