

# CUC-SP-J1ST-S/R4LT - RJ45 PCB connectors



1149872

<https://www.phoenixcontact.com/us/products/1149872>

Please be informed that the data shown in this PDF document is generated from our online catalog. Please find the complete data in the user documentation. Our general terms of use for downloads are valid.



RJ45 PCB connectors, degree of protection: IP20, 10 Gbps, material: Metal, connection method: THT wave

## Your advantages

- The right version for every application. Available with and without LED, single- and multi-port
- The extended temperature range from -40 °C to +85 °C enables use in demanding applications
- Through-hole technology (THT) provides high mechanical stability when connecting the female connector to the PCB

## Commercial data

Item number	1149872
Packing unit	100 pc
Minimum order quantity	100 pc
Sales key	AB12
Product key	ABNADA
GTIN	4063151146221
Weight per piece (including packing)	7.74 g
Weight per piece (excluding packing)	7.74 g
Customs tariff number	85366930
Country of origin	TW

# CUC-SP-J1ST-S/R4LT - RJ45 PCB connectors



1149872

<https://www.phoenixcontact.com/us/products/1149872>

## Technical data

### Product properties

Type	RJ45
Product type	Data connector (device side)
Type of packaging	Tray
Housing shield springs	No
Connection profile	RJ45
Number of slots	1
Type	Socket
Shielded	yes

### Insulation characteristics

Overvoltage category	I
Degree of pollution	2

### Electrical properties

Rated voltage (III/2)	72 V DC
Rated surge voltage	1.5 kV DC
Rated surge voltage (III/3)	1.5 kV
Rated surge voltage	1 kV DC
Rated current	1.5 A
Frequency range	10 Hz ... 500 Hz
Insulation resistance	> 500 MΩ
Test voltage	1 kV DC
Test voltage Core/Core	1 kV DC
Test voltage Core/Shield	1.50 kV DC
Transmission medium	Copper
Transmission speed	10 Gbps
Power transmission	PoE++

### Connection data

#### Connection technology

Connection method	THT wave
-------------------	----------

### Dimensions

Width	16.15 mm
Height	16.7 mm
Length	16.5 mm
Installed height	16.50 mm
Orientation to	180.00 °
Data pin length	3.25 mm

### Material specifications

# CUC-SP-J1ST-S/R4LT - RJ45 PCB connectors



1149872

<https://www.phoenixcontact.com/us/products/1149872>

Material	Au (0.152 µm/6 µ")
	Ni (1,27 µm/50 µ")
	Ni (1.27 µm / 50 µ")
	Copper alloy
Flammability rating according to UL 94	V0
Housing surface material	Nickel
Contact material	Phosphor bronze
Contact surface material	Gold
Contact carrier material	PA 9T GF
Housing material	Metal

## Cable/line

Test voltage Core/Core	1 kV DC
Test voltage Core/Shield	1.50 kV DC
Halogen-free	no
Flame resistance	UL 94 V0

## Mechanical properties

### Mechanical data

Insertion/withdrawal cycles	> 750
Insertion force per signal contact	< 20.00 N
Extraction force per signal contact	< 20 N

## Environmental and real-life conditions

### Test specification

Frequency	10-500 Hz
Sweep speed	1 octave/min
Amplitude	0.35 mm
Acceleration	50.00 m/s <sup>2</sup>
Test duration	20.00 s

### Test specification

Specification	IEC60068-2-27
Acceleration	295.00 m/s <sup>2</sup>

### Ambient conditions

Degree of protection	IP20
Ambient temperature (operation)	-40 °C ... 85 °C
Ambient temperature (storage/transport)	-40 °C ... 85 °C

## Standards and regulations

Flame resistance	UL 94 V0
------------------	----------

## Mounting

Mounting type	Wave soldering
---------------	----------------

# CUC-SP-J1ST-S/R4LT - RJ45 PCB connectors



1149872

<https://www.phoenixcontact.com/us/products/1149872>

Processing notes

Classification temperature T <sub>c</sub>	260 °C
---	--------

# CUC-SP-J1ST-S/R4LT - RJ45 PCB connectors




1149872


<https://www.phoenixcontact.com/us/products/1149872>

## Approvals

To download certificates, visit the product detail page: <https://www.phoenixcontact.com/us/products/1149872>



**cUL Recognized**  
Approval ID: FILE E 335024



**UL Recognized**  
Approval ID: FILE E 335024

**cULus Recognized**

# CUC-SP-J1ST-S/R4LT - RJ45 PCB connectors



1149872

<https://www.phoenixcontact.com/us/products/1149872>

## Classifications

### ECLASS

ECLASS-11.0	27440223
ECLASS-12.0	27440223
ECLASS-13.0	27460201

### ETIM

ETIM 9.0	EC003557
----------	----------

### UNSPSC

UNSPSC 21.0	39121400
-------------	----------

# CUC-SP-J1ST-S/R4LT - RJ45 PCB connectors



1149872

<https://www.phoenixcontact.com/us/products/1149872>

## Environmental product compliance

China RoHS	Environmentally friendly use period: unlimited = EFUP-e
	No hazardous substances above threshold values

# CUC-SP-J1ST-S/R4LT - RJ45 PCB connectors



1149872

<https://www.phoenixcontact.com/us/products/1149872>

## Accessories

### VS-08-RJ45-10G/Q - RJ45 connector

1419001

<https://www.phoenixcontact.com/us/products/1419001>



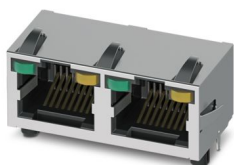
RJ45 connector, design: RJ45, degree of protection: IP20, number of positions: 8, 10 Gbps, CAT6<sub>A</sub>, material: Plastic, connection method: Insulation displacement connection, connection cross section: AWG 26- 24, cable outlet: straight, color: black, Ethernet

---

### CUC-MP-J1ST-A/2R4LT-THR-LED - RJ45 PCB connectors

1337254

<https://www.phoenixcontact.com/us/products/1337254>



RJ45 PCB connectors, degree of protection: IP20, number of positions: 8, 10 Gbps, material: Metal, connection method: THR reflow/THT wave



# CUC-SP-J1ST-S/R4LT - RJ45 PCB connectors



1149872

<https://www.phoenixcontact.com/us/products/1149872>

## VS-08-RJ45-5-Q/IP20 - RJ45 connector

1656725

<https://www.phoenixcontact.com/us/products/1656725>



RJ45 connector, design: RJ45, degree of protection: IP20, number of positions: 8, 1 Gbps, CAT5, material: Plastic, connection method: Insulation displacement connection, connection cross section: AWG 26- 23, cable outlet: straight, color: traffic grey A RAL 7042, Ethernet

---

## VS-08-RJ45-5-Q/IP20 BK - RJ45 connector

1658008

<https://www.phoenixcontact.com/us/products/1658008>



RJ45 connector, design: RJ45, degree of protection: IP20, number of positions: 8, 1 Gbps, CAT5, material: Plastic, connection method: Insulation displacement connection, connection cross section: AWG 26- 23, cable outlet: straight, color: black, Ethernet

# CUC-SP-J1ST-S/R4LT - RJ45 PCB connectors



1149872

<https://www.phoenixcontact.com/us/products/1149872>

## VS-PN-RJ45-5-Q/IP20 - RJ45 connector

1658435

<https://www.phoenixcontact.com/us/products/1658435>



RJ45 connector, design: RJ45, degree of protection: IP20, number of positions: 4, 100 Mbps, CAT5, material: Plastic, connection method: Insulation displacement connection, cable outlet: straight, color: traffic grey A RAL 7042, PROFINET

---

## CUC-IND-C1ZNI-S/R4IP10G8 - RJ45 connector

1149847

<https://www.phoenixcontact.com/us/products/1149847>



RJ45 connector, design: RJ45, degree of protection: IP20, number of positions: 8, 10 Gbps, CAT6<sub>A</sub>, material: Metal, connection method: Insulation displacement connection, connection cross section: AWG 23- 22, cable outlet: straight, color: yellow, Ethernet

# CUC-SP-J1ST-S/R4LT - RJ45 PCB connectors



1149872

<https://www.phoenixcontact.com/us/products/1149872>

## CUC-IND-C1ZNI-S/R4IE10G8 - RJ45 connector

1149846

<https://www.phoenixcontact.com/us/products/1149846>



RJ45 connector, design: RJ45, degree of protection: IP20, number of positions: 8, 10 Gbps, CAT6<sub>A</sub>, material: Metal, connection method: Insulation displacement connection, connection cross section: AWG 26- 24, cable outlet: straight, color: yellow, Ethernet

---

## CUC-IND-C1ZNI-S/R4IP8 - RJ45 connector

1421126

<https://www.phoenixcontact.com/us/products/1421126>



RJ45 connector, design: RJ45, degree of protection: IP20, number of positions: 8, 1 Gbps, CAT5, material: Metal, connection method: Insulation displacement connection, connection cross section: AWG 23- 22, cable outlet: straight, color: green, Ethernet/PROFINET

# CUC-SP-J1ST-S/R4LT - RJ45 PCB connectors



1149872

<https://www.phoenixcontact.com/us/products/1149872>

## CUC-IND-C1ZNI-S/R4IE8 - RJ45 connector

1421607

<https://www.phoenixcontact.com/us/products/1421607>



RJ45 connector, design: RJ45, degree of protection: IP20, number of positions: 8, 1 Gbps, CAT5, material: Metal, connection method: Insulation displacement connection, connection cross section: AWG 26- 24, cable outlet: straight, color: green, Ethernet

---

## CUC-IND-C1ZNI-B/R4IP8 - RJ45 connector

1421127

<https://www.phoenixcontact.com/us/products/1421127>



RJ45 connector, design: RJ45, degree of protection: IP20, number of positions: 8, 1 Gbps, CAT5, material: Metal, connection method: Insulation displacement connection, connection cross section: AWG 23- 22, cable outlet: angled, Ethernet/PROFINET

# CUC-SP-J1ST-S/R4LT - RJ45 PCB connectors



1149872

<https://www.phoenixcontact.com/us/products/1149872>

## CUC-IND-C1ZNI-B/R4IE8 - RJ45 connector

1421876

<https://www.phoenixcontact.com/us/products/1421876>



RJ45 connector, design: RJ45, degree of protection: IP20, number of positions: 8, 1 Gbps, CAT5, material: Metal, connection method: Insulation displacement connection, connection cross section: AWG 26- 24, cable outlet: angled, Ethernet

---

## CUC-IND-C1ZNI-T/R4IP8 - RJ45 connector

1421128

<https://www.phoenixcontact.com/us/products/1421128>



RJ45 connector, design: RJ45, degree of protection: IP20, number of positions: 8, 1 Gbps, CAT5, material: Metal, connection method: Insulation displacement connection, connection cross section: AWG 23- 22, cable outlet: angled, Ethernet/PROFINET

# CUC-SP-J1ST-S/R4LT - RJ45 PCB connectors



1149872

<https://www.phoenixcontact.com/us/products/1149872>

## CUC-IND-C1ZNI-T/R4IE8 - RJ45 connector

1421877

<https://www.phoenixcontact.com/us/products/1421877>



RJ45 connector, design: RJ45, degree of protection: IP20, number of positions: 8, 1 Gbps, CAT5, material: Metal, connection method: Insulation displacement connection, connection cross section: AWG 26- 24, cable outlet: angled, Ethernet

---

Phoenix Contact 2024 © - all rights reserved

<https://www.phoenixcontact.com>

Phoenix Contact USA  
586 Fulling Mill Road  
Middletown, PA 17057, United States  
(+717) 944-1300  
[info@phoenixcon.com](mailto:info@phoenixcon.com)