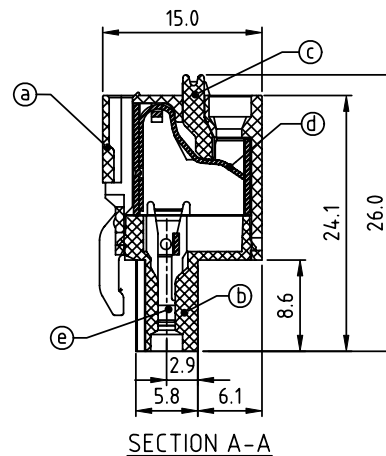
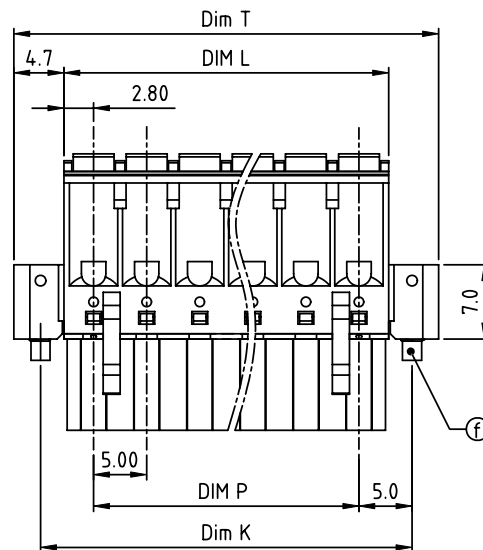
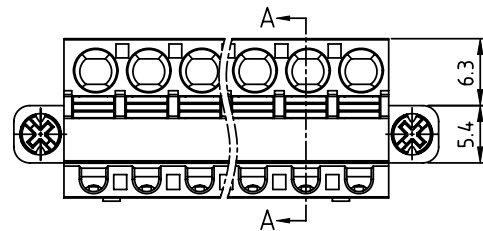


PRODUCT NUMBER	PITCH
HWxx70x300J0G	5.00 mm



Material:

- Ltem(a) Top body: Thermoplastic (UL94V-0)
- Ltem(b) Bottom body: Thermoplastic (UL94V-0)
- Ltem(c) Terminal lever: Thermoplastic (UL94V-0), Orange (RAL2001/P)
- Ltem(d) Spring clamp: Stainless Steel
- Ltem(e) Female contact: PhBz (CuSn) Tin plated
- Ltem(f) Flange screw: Steel "+/-" combination type Zinc plating M2.5

Electrical

- Voltage rating: 300V
- Current rating: 10A
- Solid wire(AWG): 12-26
- Stranded wire(AWG): 12-26
- Wire strip length: 9-10mm
- Withstanding Voltage: 1.6KV
- Operating temperature: -40°C to +115°C
- Safety Approval: cULus

N = Number of poles

Dim L=Nx5.0+ 0.6

Dim P=(N-1)x5.0

Dim T=Nx5.0+10.62

Dim K=(N+1)x5.0

Poles	Dim L	Dim P	Dim T	Dim K
2-6p	±0.15		±0.15	
7-12p	±0.20		±0.25	
13-18p	±0.25		±0.30	
19-24p	±0.30		±0.40	

PART NO.: HW xx 7 0 x 3 00J0 G

Solid block
No. of poles
02 2 poles
03 3 poles
... ..
24 24 poles

Color
0 Black (RAL9005)
2 Red (RAL3001/D)
3 Orange(RAL2011/P)
4 Yellow(RAL1018/A)
5 Green(RAL6018/T)
6 Blue (RAL5015/A)
8 Grey(RAL7035/D)
9 White(RAL1102)
C Green(RAL6018/U)

RoHS compliant
(lead<4%)
In copper Alloy

mat'l. code				surface	tolerance	projection	product family		
				ASME Y14.5	ASME Y14.5		TERMINAL BLOCK		
ltr	ecn	no	dr	date	tolerances unless otherwise specified		title		
					angles	X.±0.5	TERMINAL BLOCK		
					mm	X.X±0.3	SPRING CLAMP, PLUGGABLE PLUG, WITH FLANGE		
					X*±1"	X.XX±0.1	CONTACT ON UP SIDE		
					dr	EVIN ZHONG 051514	dwg no		
					enr	EVIN ZHONG 051514	sheet 1 of 1		
					chr	HANKE FENG 051514	HWxx70x300J0G		
					appd	SHI JUN 051514	size		
							A4		
sheet	revision	A					type		
index	sheet	1					CUSTOMER Drawing		