



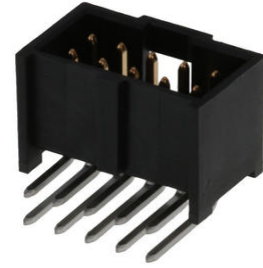
Part Number : [901303210](#)

Product Description : C-Grid III Header, Dual Row, Right-Angle, Shrouded, Fully Loaded, 10 Circuits, Black 0.38µm Gold (Au) Selective Plating

Series Number : 90130

Status : Active

Product Category : PCB Headers and Receptacles



Documents and Resources

Drawings

[901303210 sd.pdf](#)

[PK-91814-005-001.pdf](#)

3D Models and Design Files

[STEP AP242](#)

[SOLIDWORKS](#)

[Creo](#)

[Symbol and Footprint \(Multi-Format\)](#)

Specifications


[901190001-AS-000.pdf](#)

[PK-90130-001-001.pdf](#)

[PS-99020-0001-001.pdf](#)

Product Environment Compliance

Compliance

| | |
|--------------------|---|
| GADSL/IMDS | Compliant with Exemption 44 |
| China RoHS |  per SJ/T 11365-2006 |
| EU ELV | Not Relevant |
| Low-Halogen Status | Not Low-Halogen per IEC 61249-2-21 |
| REACH SVHC | Not Contained per D(2025)6375-DC (05 Nov 2025) |
| EU RoHS | Compliant per EU 2015/863 |

Compliance Statements

- EU RoHS
- REACH SVHC
- Low-Halogen

Industry Documents

- IPC 1752A Class C
- IPC 1752A Class D
- Molex Product Compliance Declaration
- IEC-62474
- chemSHERPA (xml)

Substances of Interest

- PFAS

EU RoHS Certificate of Compliance

Additional Product Compliance Information

Part Details

General

| | |
|----------------|---|
| Status | Active |
| Category | PCB Headers and Receptacles |
| Series | 90130 |
| Description | C-Grid III Header, Dual Row, Right-Angle, Shrouded, Fully Loaded, 10 Circuits, Black 0.38µm Gold (Au) Selective Plating |
| Application | Signal, Wire-to-Board |
| Component Type | PCB Header |
| Product Name | C-Grid III |
| UPC | 800753705203 |

Agency

| | |
|-----|---------|
| CSA | LR19980 |
| UL | E29179 |

Electrical

| | |
|-------------------------------|------------|
| Current - Maximum per Contact | 3.0A |
| Voltage - Maximum | 350V AC/DC |

Physical

| | |
|--------------------------------|----------------|
| Breakaway | No |
| Circuits (Loaded) | 10 |
| Circuits (maximum) | 10 |
| Color - Resin | Black |
| Durability (mating cycles max) | 100 |
| First Mate / Last Break | No |
| Glow-Wire Capable | No |
| Guide to Mating Part | No |
| Keying to Mating Part | None |
| Lock to Mating Part | Yes |
| Material - Metal | Brass |
| Material - Plating Mating | Gold |
| Material - Plating Termination | Tin |
| Material - Resin | Polyester |
| Net Weight | 1.485/g |
| Number of Rows | 2 |
| Orientation | Right Angle |
| Packaging Type | Tray |
| PCB Locator | No |
| PCB Retention | None |
| PCB Thickness - Recommended | 1.60mm |
| PC Tail Length | 2.90mm |
| Pitch - Mating Interface | 2.54mm |
| Pitch - Termination Interface | 2.54mm |
| Plating min - Mating | 0.381µm |
| Plating min - Termination | 3.048µm |
| Polarized to Mating Part | Yes |
| Polarized to PCB | No |
| Shrouded | Closed Ends |
| Stackable | No |
| Temperature Range - Operating | -55° to +125°C |
| Termination Interface Style | Through Hole |

Solder Process Data

| | |
|------------------------------|------|
| Max-Duration | 3 |
| Lead-Free Process Capability | WAVE |
| Max-Cycle | 1 |
| Max-Temp | 235 |

Mates With / Use With

Mates with Part(s)

| Description | Part Number |
|--|--------------|
| C-Grid III Dual Row Crimp Housings | <u>90142</u> |
| C-Grid III Modular Dual Row Crimp Housings | <u>90143</u> |

This document was generated on Jan 23, 2026