



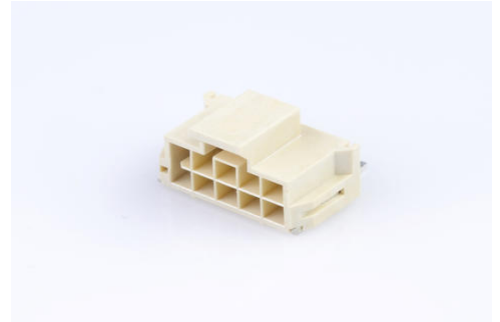
Part Number : [1054052110](#)

Product Description : Nano-Fit Right-Angle Header, Surface Mount, 2.50mm Pitch, Dual Row, 10 Circuits, 0.76µm Tin (Sn) Plating, Natural, Glow-Wire Capable

Series Number : 105405

Status : Active

Product Category : PCB Headers and Receptacles



Documents and Resources

Drawings

[1054052110_sd.pdf](#)

[PK-105405-003-000.pdf](#)

3D Models and Design Files

[STEP AP242](#)

[SOLIDWORKS](#)

[Creo](#)

[Symbol and Footprint \(Multi-Format\)](#)

[SYM-105405-XX10-001.zip](#)

Specifications

[AS-105405-001-001.pdf](#)

[1054051000-PS-CH-000.pdf](#)

[1054051000-PS-ES-000.pdf](#)


[1054051000-PS-SK-000.pdf](#)

[PS-105405-001-001.pdf](#)

[1054051000-TS-000.pdf](#)

Product Environment Compliance

Compliance

GADSL/IMDS	Compliant with Exemption 44; 33
China RoHS	 per SJ/T 11365-2006
EU ELV	Not Relevant

Low-Halogen Status	Not Relevant
REACH SVHC	Not Contained per D(2025)7771-DC (04 Feb 2026)
EU RoHS	Compliant per EU 2015/863

Compliance Statements

- EU RoHS
- REACH SVHC
- Low-Halogen

Industry Documents

- IPC 1752A Class C
- IPC 1752A Class D
- Molex Product Compliance Declaration
- IEC-62474
- chemSHERPA (xml)

Substances of Interest

- PFAS

EU RoHS Certificate of Compliance

Additional Product Compliance Information

Part Details

General

Status	Active
Category	PCB Headers and Receptacles
Series	105405
Description	Nano-Fit Right-Angle Header, Surface Mount, 2.50mm Pitch, Dual Row, 10 Circuits, 0.76µm Tin (Sn) Plating, Natural, Glow-Wire Capable
Application	Wire-to-Board
Component Type	PCB Header
Product Name	Nano-Fit
UPC	889056259941

Agency

UL	E29179
----	--------

Electrical

Current - Maximum per Contact	7.0A
Voltage - Maximum	250V AC (RMS)/DC

Physical

Breakaway	No
Circuits (Loaded)	10
Circuits (maximum)	10
Color - Resin	Natural
Durability (mating cycles max)	25
First Mate / Last Break	No
Flammability	94V-0
Glow-Wire Capable	Yes
Keying to Mating Part	Yes
Lock to Mating Part	Yes
Material - Metal	Brass
Material - Plating Mating	Tin
Material - Plating Termination	Tin
Material - Resin	Liquid Crystal Polymer (LCP)
Net Weight	1.340/g
Number of Rows	2
Orientation	Right Angle
Packaging Type	Embossed Tape on Reel
PCB Locator	No
PCB Retention	Yes
PCB Thickness - Recommended	1.60mm
Pitch - Mating Interface	2.50mm
Pitch - Termination Interface	2.50mm
Plating min - Mating	0.762µm
Plating min - Termination	0.762µm
Polarized to Mating Part	Yes
Polarized to PCB	Yes
Shrouded	Shrouded
Temperature Range - Operating	-40° to +125°C
Termination Interface Style	Surface Mount

Mates With / Use With

Mates with Part(s)

Description	Part Number
Nano-Fit Receptacle Housing, TPA Capable, 2.50mm Pitch, Dual Row, 10 Circuits, Natural, Glow-Wire Capable	<u>1053082210</u>
Nano-Fit Receptacle Housing, TPA Capable, 2.50mm Pitch, Dual Row, 10 Circuits, Natural, Glow-Wire Capable, for UL 1569/1007 Wire	<u>2263622210</u>

This document was generated on May 20, 2026