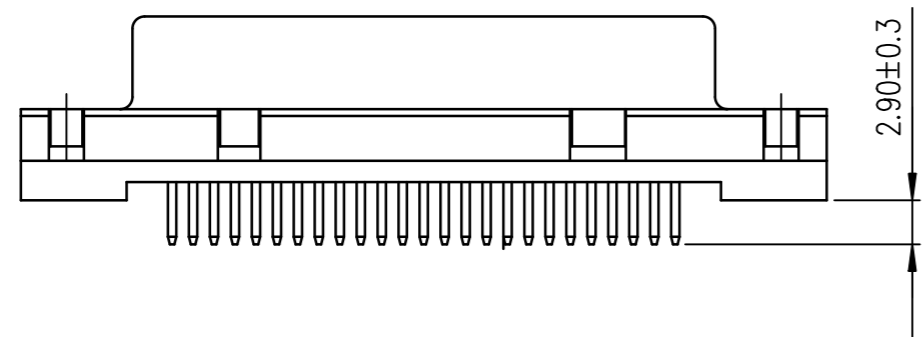
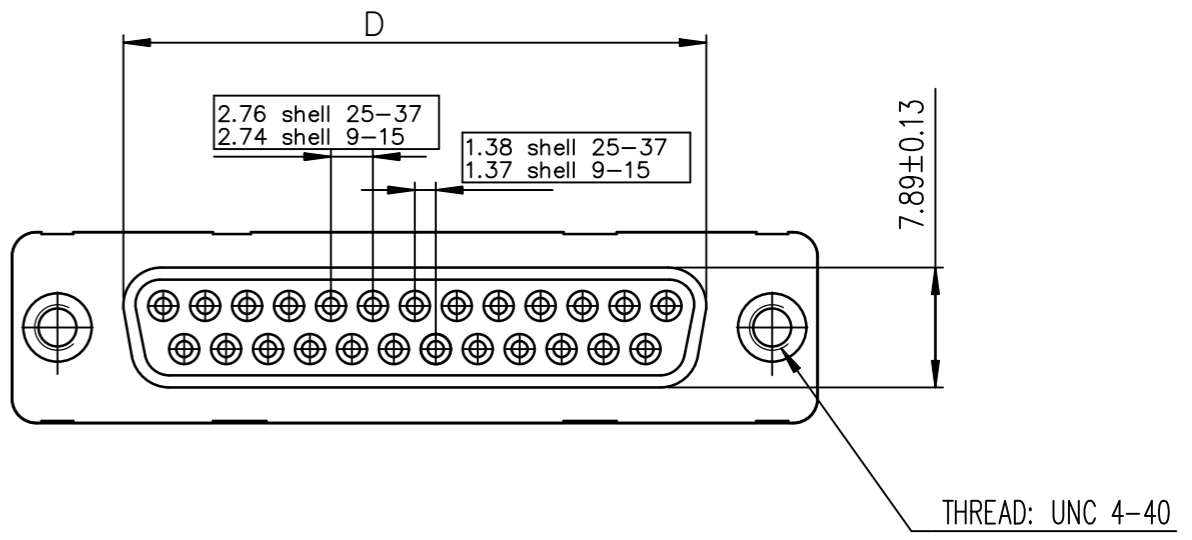
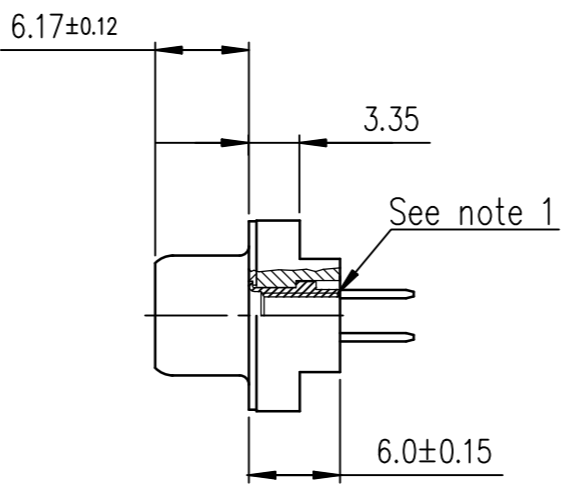
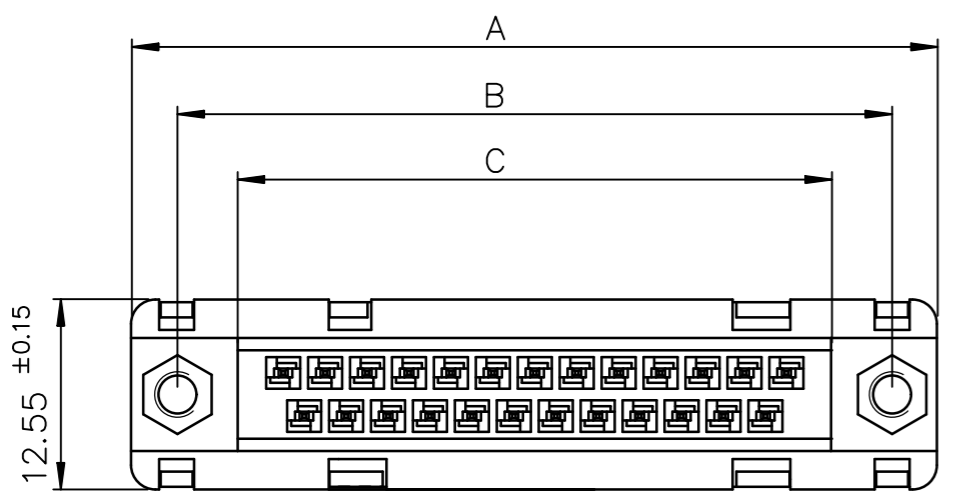


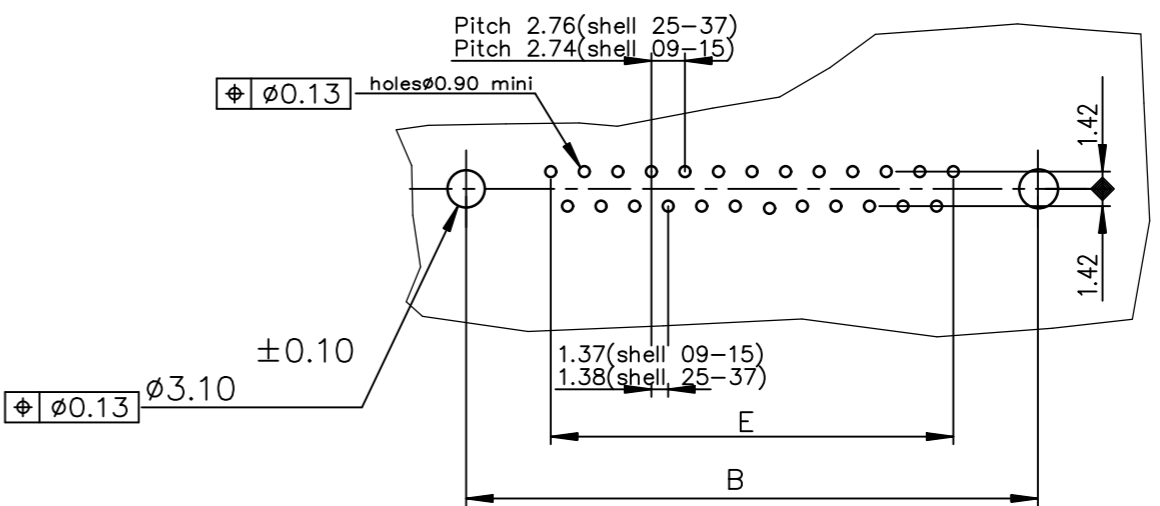


Amphenol
FCi

© 2016 AFci



PC card drilling dimensions(after plating)
(thickness 1.60 ± 0.20mm)



PART NUMBER

SHELL	A±0.38	B±0.12	C±0.10	D±0.25	E±0.07	PART NUMBER
09	30.81	24.99	16.96	16.21	10.96	D09S24A.PX00LF
15	39.14	33.32	25.18	24.54	19.18	D15S24A.PX00LF
25	53.03	47.04	39.12	38.25	33.12	D25S24A.PX00LF
37	69.32	63.50	55.68	54.71	49.68	D37S24A.PX00LF

4 - 200 MATING CYCLES
6 - 500 MATING CYCLES

Notes:

1) The nut can protrude above the surface of insulator but maintaining the footprint dimension 6.0 ± 0.15 mm.

GENERAL CHARACTERISTICS AND ROHS INFORMATIONS:
SEE DRAWING C01-8646-0000

mat'l. code SEE NOTES		surface ISO 1302 ✓	tolerance ISO 406 ISO 1101	projection 	product family D-SUB
ltr	ecn no	dr	date	tolerances unless otherwise specified	title
F	ELX-I-281390	AB	2026-03-10	angles linear 0°±2'	FEMALE CONNECTOR STD EUROPE STRAIGHT SOLDER TYPE FOR PCB 1.6mm
				dr	JOUBERT 1996-09-10
				enr	GREGAR M 2026-03-10
				chr	GREGAR M 2026-03-10
				app	ALEX BABU 2026-03-10
sheet index	revision	F		scale 2:1	dwg no sheet 1 of 1 size
	sheet	1		Amphenol FCi	C01-8646-0492 A3
					type Product Customer Drawing