



**Part Number :** [50842150](#)

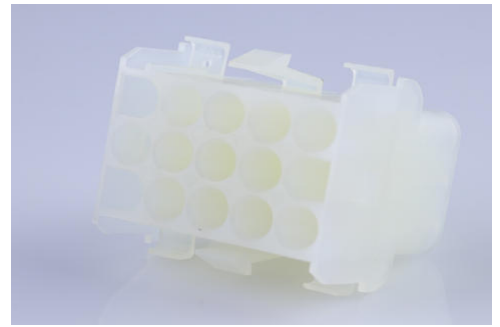
**Product Description :** 2.13mm Diameter MLX Pin and Socket Receptacle, 15 Circuits, Natural

**Series Number :** 42022

**Status :** Active

**Product Category :** Connector Housings

**Engineering Part Number :** 42022-15A



---

## Documents and Resources

### Drawings

[050842150\\_sd.pdf](#)

[PK-42022-XX-001.pdf](#)

### 3D Models and Design Files

[STEP AP242](#)

[SOLIDWORKS](#)

[Creo](#)

### Specifications


[PS-42022-0001-001.pdf](#)

[TS-42022-0001-001.pdf](#)

---

## Product Environment Compliance

### Compliance

GADSL/IMDS	Not Relevant
China RoHS	 per SJ/T 11365-2006
EU ELV	Not Relevant
Low-Halogen Status	Low-Halogen per IEC 61249-2-21
REACH SVHC	Not Contained per D(2025)7771-DC (04 Feb 2026)
EU RoHS	Compliant per EU 2015/863

### [Compliance Statements](#)

- EU RoHS

- REACH SVHC
- Low-Halogen

#### Industry Documents

- IPC 1752A Class C
- IPC 1752A Class D
- Molex Product Compliance Declaration
- IEC-62474
- chemSHERPA (xml)

#### Substances of Interest

- PFAS

#### EU RoHS Certificate of Compliance

#### Additional Product Compliance Information

---

## Part Details

### General

Status	Active
Category	Connector Housings
Series	42022
Description	2.13mm Diameter MLX Pin and Socket Receptacle, 15 Circuits, Natural
Application	Power, Wire-to-Wire
Comments	Glow Wire Equivalent Part Number 366440008; Maximum current per contact 20A if used with 36663 and 36664 terminal
Product Name	MLX
UPC	800753755307

### Agency

CSA	LR19980
UL	E29179

### Physical

Circuits Detail	15
Circuits (maximum)	15
Color - Resin	Natural

Gender	Receptacle
Glow-Wire Capable	No
Keying to Mating Part	No
Lock to Mating Part	Yes
Material - Resin	Nylon
Net Weight	10.481/g
Number of Rows	3
Packaging Type	Carton
Panel Mount	Yes
Pitch - Mating Interface	6.35mm
Polarized to Mating Part	Yes
Stackable	No
Temperature Range - Operating	-55° to +105°C

### Solder Process Data

Lead-Free Process Capability	N/A
------------------------------	-----

---

### Mates With / Use With

#### Mates with Part(s)

Description	Part Number
2.13mm Diameter MLX Power Crimp Housing Plugs	<a href="#">42021</a>

#### Use with Part(s)

Description	Part Number
Pre-Crimped Lead MLX Male-to-MLX Male, Tin (Sn) Plating, 150.00mm Length, 18 AWG, Black	<a href="#">797582029</a>
Pre-Crimped Lead MLX Male-to-MLX Male, Tin (Sn) Plating, 300.00mm Length, 18 AWG, Black	<a href="#">797582030</a>
Pre-Crimped Lead MLX Female-to-MLX Female, Tin (Sn) Plating, 150.00mm Length, 18 AWG, Black	<a href="#">797582031</a>
Pre-Crimped Lead MLX Female-to-MLX Female, Tin (Sn) Plating,	<a href="#">797582032</a>

300.00mm Length, 18 AWG, Black	
MLX Male Crimp Terminals	<u>42023</u>
MLX Female Crimp Terminals	<u>42024</u>

---

This document was generated on May 05, 2026