

QPD W 4PE1,5 M25 FC BK - Panel feed-through



1414738

<https://www.phoenixcontact.com/us/products/1414738>

Please be informed that the data shown in this PDF document is generated from our online catalog. Please find the complete data in the user documentation. Our general terms of use for downloads are valid.



Panel feed-through, product family: QPD, QUICKON connection, number of positions: 4+PE, M25, 690 V, 17.5 A, PA, black, without QUICKON nut, Spade connection (For slip-on sleeves according to DIN 46247-2), 1.5 mm²

Your advantages

- Innovative and time saving - QUICKON fast connection for time saving of up to 80 % for on-site connection
- Robust throughout: housing with IP68/IP69K and IK07 protection for a wide range of applications
- Safer connection with mechanical coding to protect against mismatching, and touch-proof protection in accordance with DIN EN 0105
- Efficient - by using panel feed-throughs, devices no longer need to be opened in order to connect cables

Commercial data

Item number	1414738
Packing unit	1 pc
Sales key	BF50
Product key	BF6ACA
Catalog page	Page 478 (C-2-2019)
GTIN	4055626033532
Weight per piece (including packing)	26.7 g
Weight per piece (excluding packing)	25.01 g
Customs tariff number	85366990
Country of origin	PL

QPD W 4PE1,5 M25 FC BK - Panel feed-through



1414738

<https://www.phoenixcontact.com/us/products/1414738>

Technical data

Product properties

Type	QPD 5x1,5
Product type	Panel feed-through
Product family	QPD
Number of positions	5
Connection profile	4+PE
Position marking	1, 2, 3, N, PE
Number of connections	10
Number of connections per position	1
Coding	Coding profile

Insulation characteristics

Overvoltage category	III
Degree of pollution	3

Connection data

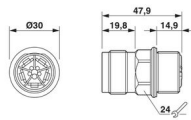
Connection technology

Connection technology	QUICKON connection
Frequency of connections between conductors of the same cross section	max. 10

Conductor connection

Conductor cross section flexibel	0.5 mm² ... 1.5 mm²
Conductor cross section solid	0.5 mm² ... 1.5 mm²
Connection cross section AWG	20 ... 16
Tightening torque Union nut	8 Nm
Tightening torque Locking nut	5 Nm

Dimensions

Dimensional drawing	
Width	30 mm
Height	30 mm
Length	47.9 mm
Diameter	30 mm
Dimensions of slip-on connection	4.8 x 0.8 mm

Electrical properties

Rated surge voltage (II/2)	8 kV
Rated surge voltage (III/2)	8 kV

QPD W 4PE1,5 M25 FC BK - Panel feed-through



1414738

<https://www.phoenixcontact.com/us/products/1414738>

Rated surge voltage (III/3)	6 kV
Rated current	17.5 A
Contact resistance	< 3 mΩ
rated voltage (II/2)	1000 V
rated voltage (III/2)	1000 V
Rated voltage (III/3)	690 V
Nominal voltage U_N	690 V AC
	690 V DC
Nominal current I_N	17.5 A

Mechanical properties

Mechanical data

Insertion/withdrawal cycles	max. 50
-----------------------------	---------

Material specifications

Color	black (RAL 9005)
Material Housing	PA
Material Contact	Cu
Material Contact surface	Silver-plated
Flammability rating according to UL 94	V0
Material wire insulation	PVC / PE / rubber / TPE

Cable/line

Structure of individual litz in acc. with VDE 0295 / smallest wire diameter	VDE 0295 class 1 to 6/min. 0.15 mm
Wire diameter including insulation	1.6 mm ... 3 mm
Position marking	1, 2, 3, N, PE
Cable cross section	1.5 mm ²
Material wire insulation	PVC/PE/TPE/rubber

Mounting

Mounting type	Front mounting M25
Connection method	Spade connection

Environmental and real-life conditions

Ambient conditions

Degree of protection	IP66
	IP68 (2 m / 24 h)
	IP69K
Ambient temperature (operation)	-40 °C ... 100 °C
Temperature when conductor connected	-5 °C ... 50 °C
Ambient temperature (storage/transport)	-40 °C ... 100 °C

QPD W 4PE1,5 M25 FC BK - Panel feed-through

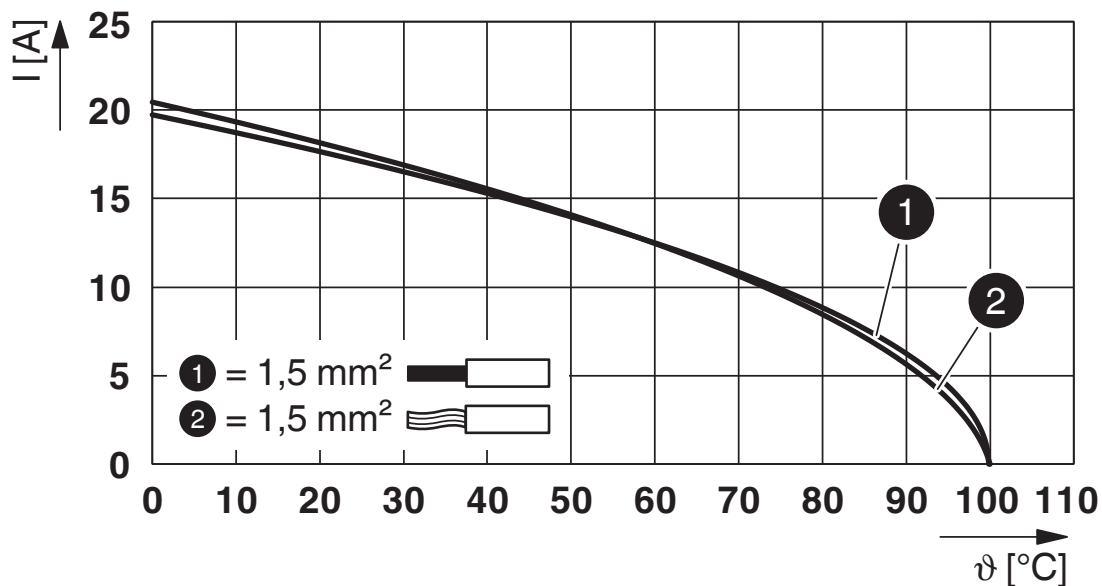


1414738

<https://www.phoenixcontact.com/us/products/1414738>

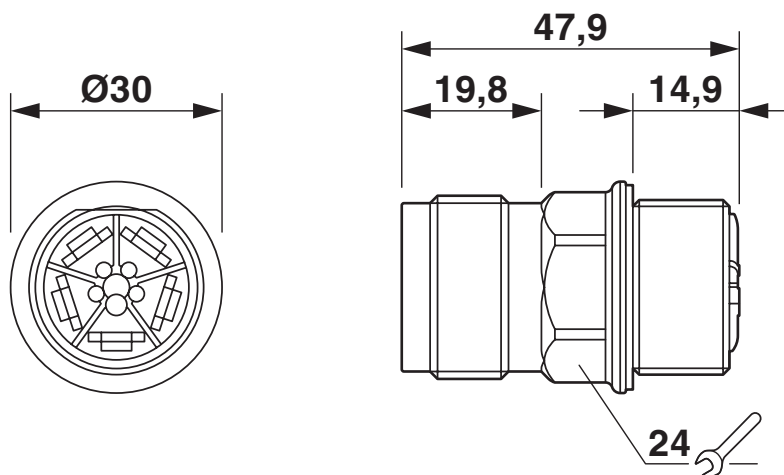
Drawings

Diagram



Derating diagram

Dimensional drawing



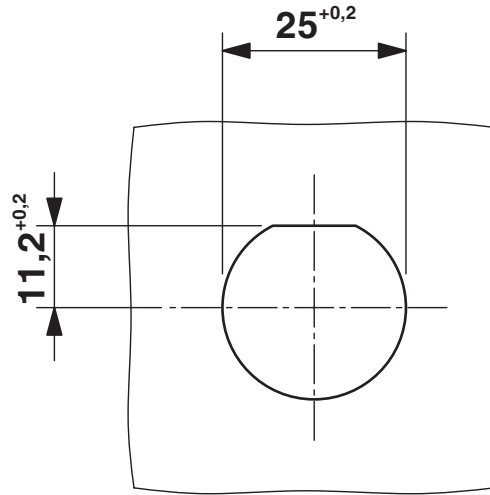
QPD W 4PE1,5 M25 FC BK - Panel feed-through

1414738

<https://www.phoenixcontact.com/us/products/1414738>



Dimensional drawing



Panel cutout

QPD W 4PE1,5 M25 FC BK - Panel feed-through




1414738


<https://www.phoenixcontact.com/us/products/1414738>

Approvals

To download certificates, visit the product detail page: <https://www.phoenixcontact.com/us/products/1414738>




IECEE CB Scheme
Approval ID: DE1-65875



EAC
Approval ID: RU C-DE.BL08.B.00511




DNV GL
Approval ID: TAE00003J5



VDE Zeichengenehmigung
Approval ID: 40029149

	UL Listed Approval ID: E468743			
	Nominal voltage U_N	Nominal current I_N	Cross section AWG	Cross section mm^2
	600 V	8 A	-	- 16

	cUL Listed Approval ID: E468743			
	Nominal voltage U_N	Nominal current I_N	Cross section AWG	Cross section mm^2
	600 V	8 A	- 16	-

cULus Listed

QPD W 4PE1,5 M25 FC BK - Panel feed-through



1414738

<https://www.phoenixcontact.com/us/products/1414738>

Classifications

ECLASS

ECLASS-11.0	27440602
ECLASS-12.0	27440602
ECLASS-13.0	27440602

ETIM

ETIM 9.0	EC002566
----------	----------

UNSPSC

UNSPSC 21.0	39121500
-------------	----------

QPD W 4PE1,5 M25 FC BK - Panel feed-through



1414738

<https://www.phoenixcontact.com/us/products/1414738>

Environmental product compliance

China RoHS	Environmentally friendly use period: unlimited = EFUP-e
	No hazardous substances above threshold values

QPD W 4PE1,5 M25 FC BK - Panel feed-through

1414738

<https://www.phoenixcontact.com/us/products/1414738>



Mandatory accessories

QPD P 4PE1,5 5-10 BK - Connector

1414749

<https://www.phoenixcontact.com/us/products/1414749>



Connector, product family: QPD, QUICKON connection, number of positions: 4+PE, 690 V, 17.5 A, PA, black, with QUICKON nut, external cable diameter: 6 mm ... 10 mm

QPD P 4PE1,5 9-14 BK - Connector

1414750

<https://www.phoenixcontact.com/us/products/1414750>



Connector, product family: QPD, QUICKON connection, number of positions: 4+PE, 690 V, 17.5 A, PA, black, with QUICKON nut, external cable diameter: 10 mm ... 14 mm

QPD W 4PE1,5 M25 FC BK - Panel feed-through



1414738

<https://www.phoenixcontact.com/us/products/1414738>

QPD N 4PE1,5 5-10 BK - Nut

1415101

<https://www.phoenixcontact.com/us/products/1415101>



Nut, product family: QPD, QUICKON connection, number of positions: 4+PE, 690 V, 17.5 A, PA, black, external cable diameter: 6 mm ... 10 mm

QPD N 4PE1,5 9-14 BK - Nut

1415104

<https://www.phoenixcontact.com/us/products/1415104>



Nut, product family: QPD, QUICKON connection, number of positions: 4+PE, 690 V, 17.5 A, PA, black, external cable diameter: 10 mm ... 14 mm

Accessories

QPD W 4PE1,5 M25 FC BK - Panel feed-through

1414738

<https://www.phoenixcontact.com/us/products/1414738>



QPD QSK 5X1,5 - Protective cap

1414758

<https://www.phoenixcontact.com/us/products/1414758>

Protective cap plastic, for QPD-QUICKON connection 5x 1.5 mm², IP50



CP-QPD 5X1,5 - Coding profile

1414760

<https://www.phoenixcontact.com/us/products/1414760>

Coding profile red, for pushing into the QUICKON dome and connector, can be positioned in 90° steps.



QPD W 4PE1,5 M25 FC BK - Panel feed-through

1414738

<https://www.phoenixcontact.com/us/products/1414738>



QPD QSK BK 5X1,5 FS - Protective cap

1414728

<https://www.phoenixcontact.com/us/products/1414728>

Protective cap, plastic, for QUICKON connection, black, with retaining cord, IP68



Q-MU M25 - Nut

1640715

<https://www.phoenixcontact.com/us/products/1640715>

Nut (plastic) to lock the contact carrier from the inside of the device



QPD W 4PE1,5 M25 FC BK - Panel feed-through

1414738

<https://www.phoenixcontact.com/us/products/1414738>



QPD W 4PE1,5 M25 0,5 BK - Panel feed-through

1414736

<https://www.phoenixcontact.com/us/products/1414736>



Panel feed-through, product family: QPD, QUICKON connection, number of positions: 4+PE, M25, 690 V, 17.5 A, PA, black, without QUICKON nut, Single wires (welded-on), 1.5 mm², wires cut flat at the end, cable length: 0.5 m

QPD W 4PE1,5 M25 1,0 BK - Panel feed-through

1414737

<https://www.phoenixcontact.com/us/products/1414737>



Panel feed-through, product family: QPD, QUICKON connection, number of positions: 4+PE, M25, 690 V, 17.5 A, PA, black, without QUICKON nut, Single wires, 1.5 mm², cable length: 1 m

QPD W 4PE1,5 M25 FC BK - Panel feed-through

1414738

<https://www.phoenixcontact.com/us/products/1414738>



QPD H 4PE1,5 BK - H distributor

1414757

<https://www.phoenixcontact.com/us/products/1414757>



H distributor, product family: QPD, QUICKON connection, number of positions: 4+PE, 690 V, 17.5 A, PA, black, without QUICKON nut

QPD C 4PE1,5 1X5-10 BK - Conductor connectors

1414739

<https://www.phoenixcontact.com/us/products/1414739>



Conductor connectors, product family: QPD, QUICKON connection, number of positions: 4+PE, 690 V, 17.5 A, PA, black, with one QUICKON nut, external cable diameter: 6 mm ... 10 mm, QUICKON fast connection

QPD W 4PE1,5 M25 FC BK - Panel feed-through

1414738

<https://www.phoenixcontact.com/us/products/1414738>



QPD C 4PE1,5 1X9-14 BK - Conductor connectors

1414741

<https://www.phoenixcontact.com/us/products/1414741>



Conductor connectors, product family: QPD, QUICKON connection, number of positions: 4+PE, 690 V, 17.5 A, PA, black, with one QUICKON nut, external cable diameter: 10 mm ... 14 mm, QUICKON fast connection

QPD T 4PE1,5 2X5-10 BK - T distributor

1414751

<https://www.phoenixcontact.com/us/products/1414751>



T distributor, product family: QPD, QUICKON connection, number of positions: 4+PE, 690 V, 17.5 A, PA, black, With two QUICKON nuts, external cable diameter: 6 mm ... 10 mm

QPD W 4PE1,5 M25 FC BK - Panel feed-through

1414738

<https://www.phoenixcontact.com/us/products/1414738>



QPD T 4PE1,5 2X9-14 BK - T distributor

1414752

<https://www.phoenixcontact.com/us/products/1414752>



T distributor, product family: QPD, QUICKON connection, number of positions: 4+PE, 690 V, 17.5 A, PA, black, With two QUICKON nuts, external cable diameter: 10 mm ... 14 mm

QSS 22 - Socket wrench

1670206

<https://www.phoenixcontact.com/us/products/1670206>



Allen wrench, for loosening and fastening the QUICKON union nut, WAF 22 mm

Phoenix Contact 2024 © - all rights reserved
<https://www.phoenixcontact.com>

Phoenix Contact USA
586 Fulling Mill Road
Middletown, PA 17057, United States
(+717) 944-1300
info@phoenixcon.com