



Part Number : [1727040015](#)

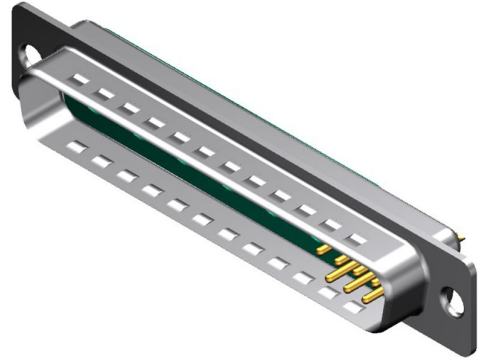
Product Description : FCT Mixed Layout D-Sub Connector, Male, Straight, Solder Cup, Gold over Nickel Phosphorus Plating, Tin-plated Shell with Dimples, 13 Circuits Max, 7 Signal Contacts Loaded, Green Insulator

Series Number : 172704

Status : Active

Product Category : D-Sub Connectors

Engineering Number : FM13W6PA-K120



Documents & Resources

Drawings

[Drawing 1727040015_sd.pdf](#)

3D Models and Design Files

[3D Model 1727040015_stp.zip](#)

Product Environment Compliance

Compliance

GADSL/IMDS	Not Relevant
China RoHS	
EU ELV	Not Relevant
Low-Halogen Status	Not Reviewed per IEC 61249-2-21
REACH SVHC	Contains Lead per D(2023)3788-DC (14 Jun 2023)
EU RoHS	Compliant with Exemption 6(c) per EU 2015/863

[Multiple Part Product Compliance Statements](#)

- Eu RoHS
- REACH SVHC
- Low-Halogen

[Multiple Part Industry Compliance Documents](#)

- IPC 1752A Class C

- IPC 1752A Class D
- Molex Product Compliance Declaration
- IEC-62474
- chemSHERPA (xml)

EU RoHS Certificate of Compliance

Part Details

General

Status	Active
Category	D-Sub Connectors
Series	172704
Description	FCT Mixed Layout D-Sub Connector, Male, Straight, Solder Cup, Gold over Nickel Phosphorus Plating, Tin-plated Shell with Dimples, 13 Circuits Max, 7 Signal Contacts Loaded, Green Insulator
IP Rating	IP20
Magnetic	Yes
Product Family	FCT D-Sub Connectors
Product Name	FCT Products
Type	Mixed Layout
UPC	889056019262

Electrical

Current - Maximum per Contact	7.5A
Shielded	Yes

Physical

Circuits (Loaded)	7
Circuits (maximum)	13
Color - Resin	Green
Durability (mating cycles max)	500
Gender	Male
Material - Contact	Copper Alloy
Material - Resin	PBT
Material - Shell	Steel

Net Weight	10.300/g
Number of Rows	2
Orientation	Straight
Packaging Type	Carton
Panel Mount	Rear
Panel Mount Method	Flange
PCB Locator	No
PCB Retention	None
Pitch - Mating Interface	2.84mm
Pitch - Termination Interface	2.84mm
Plating - Contact	Gold over Nickel Phosphorus
Plating - Shell	Tin
Polarized to Mating Part	Yes
Ports	1
Temperature Range - Operating	-55° to +130°C
Termination Style	Solder Cup
Waterproof / Dustproof	No
Waterproof / Dustproof Type	IP20
Wire Size (AWG)	20

Mates With / Use With

Mates with Part(s)

Description	Part Number
Mates With	FCT Mixed Layout D-Sub, Size 4, 13W6, Socket

Use with Part(s)

Description	Part Number
Use With	FCT Coaxial, High Power, High Voltage, or Pneumatic Contacts

This document was generated on Sep 22, 2024