
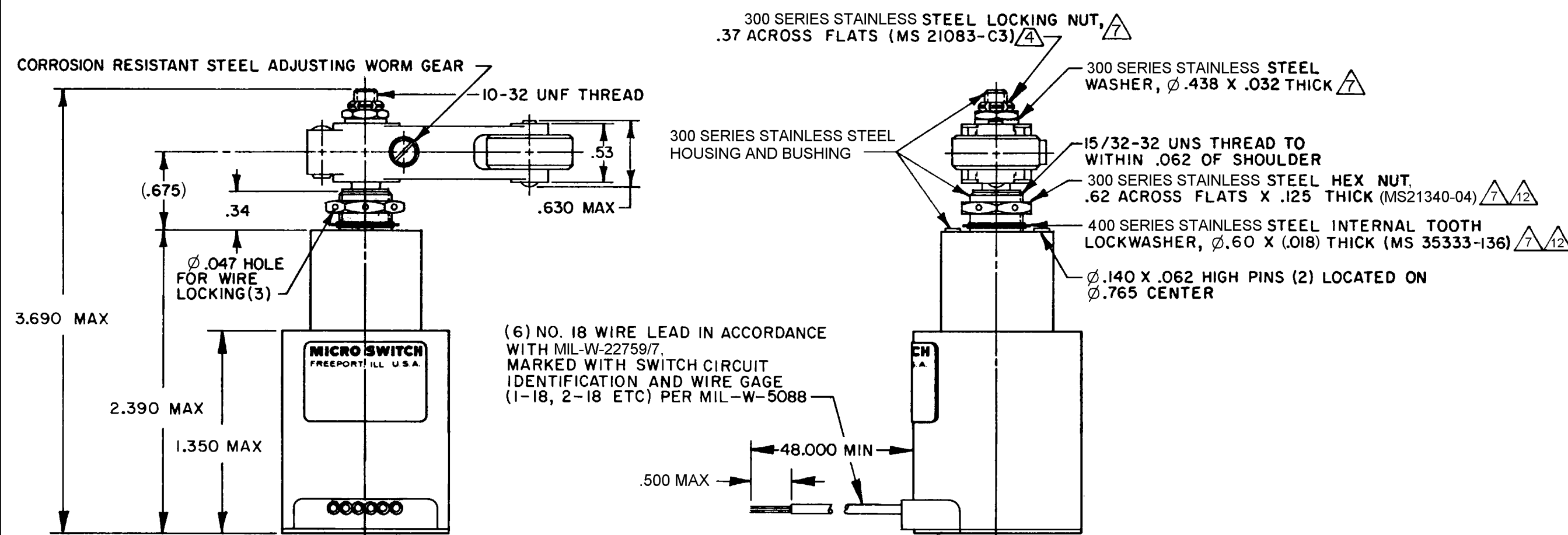
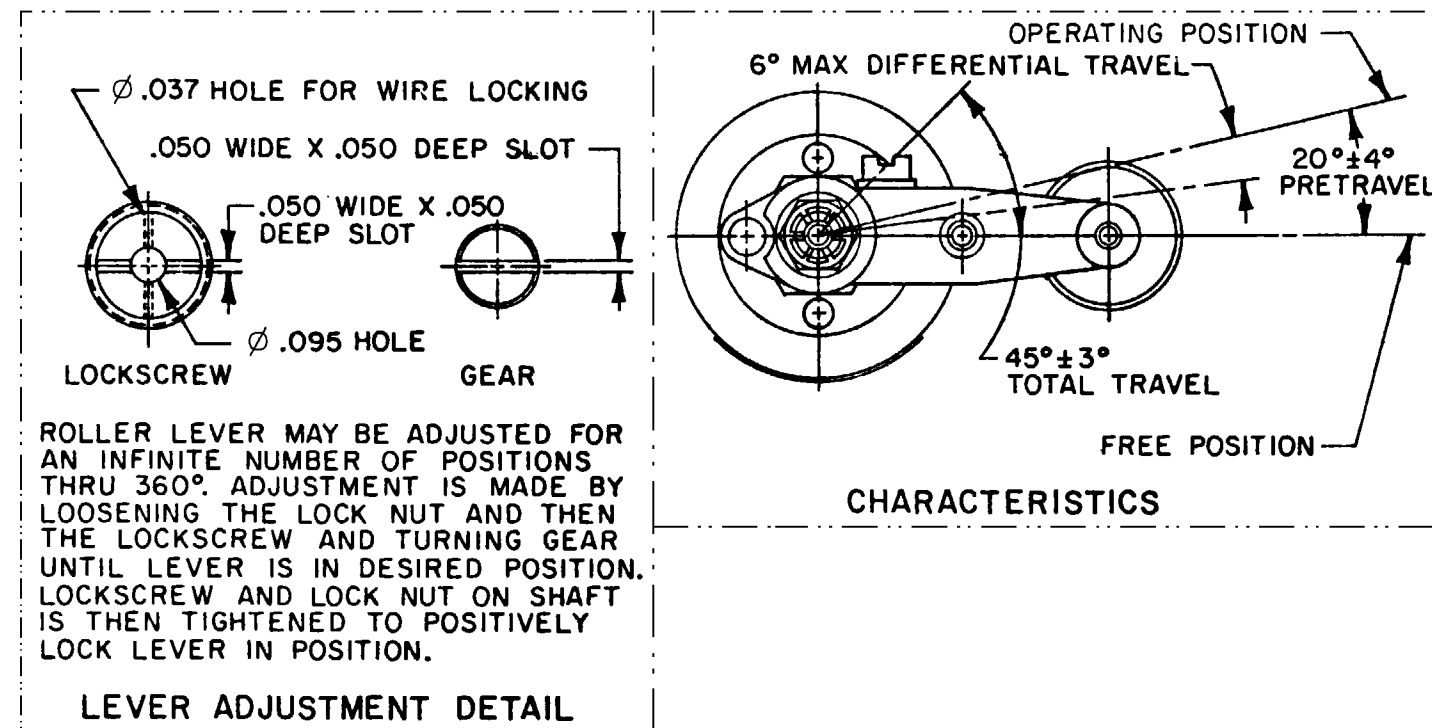
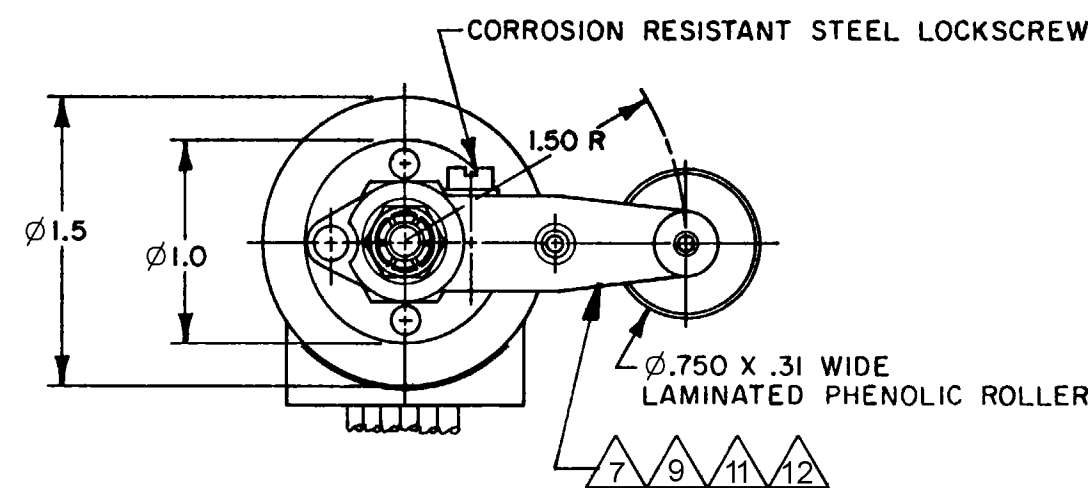


HONEYWELL PART NUMBER
35EN24-4
FAA-PMA 

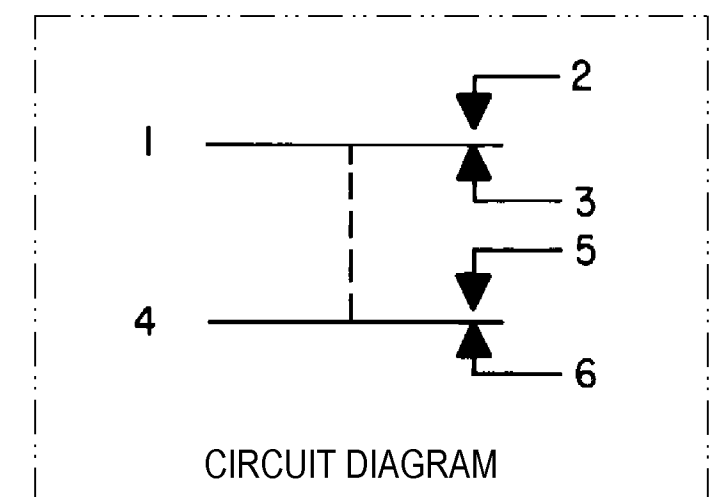
REV	DOCUMENT	CHANGED BY	CHECK
12	0050529	SSK 26MAR09	CMH



NOTES

- 1 CORROSION RESISTANT STEEL ENCLOSURE
- 2 SWITCH SEALED PER MIL-PRF-8805 SYMBOL 4
- 3 CIRCUIT DIAGRAM, CATALOG LISTING, DATE CODE,
FED. MFG. CODE AND FAA - PMA ARE SHOWN ON NAMEPLATE
- 4 DO NOT APPLY MORE THAN 20-25 INCH-POUNDS
OF TORQUE WHEN TIGHTENING LOCKING NUT
- 5 SHAFT SEAL MATERIAL E.P.RUBBER
- 6 BASIC SWITCHES HAVE BIFURCATED GOLD CONTACTS
- 7 HARDWARE MAYBE PACKAGED UNASSEMBLED PER MIL-PRF-8805
- 8 TOTAL TRAVEL OF ROLLER LEVER IS $45^{\circ} \pm 3^{\circ}$ IN COUNTER-CLOCKWISE
DIRECTION ONLY, WITH SPRING RETURN TO NEUTRAL
- 9 CHROMATED ALUMINIUM DIE CAST LEVER
- 10 CONTACT HONEYWELL-MICRO SWITCH IF ADDITIONAL INFORMATION ON LOW
ENERGY LOADS IS REQUIRED OR FOR HELP WITH SPECIFIC APPLICATIONS
- 11 REPLACEMENT LEVER 6PA30
- 12 REPLACEMENT MOUNTING HARDWARE - PACKET 19PA209-EN
- 13 AS MANUFACTURED SWITCH RESISTANCE SHOULD NOT EXCEED THE VALUE SPECIFIED
WHEN MEASURED AT ACTUATOR FREE POSITION AND FULL OVERTRAVEL. A NEW SWITCH
AS INSTALLED CARRYING APPLICATION LOADS SHOULD HAVE SWITCH RESISTANCE NOT
EXCEEDING 1% OF THE LOAD IMPEDANCE. HONEYWELL-MICRO SWITCH VERIFIES SWITCH
RESISTANCE USING THE FOUR-WIRE VOLTAGE DROP METHOD
- 14 LIFE RATINGS ARE PER MIL-PRF-8805 REQUIREMENTS. ACTUAL LIFE EXCEEDS RATED LIFE.
CONTACT HONEYWELL-MICRO SWITCH FOR ADDITIONAL DATA
- 15 FOR MANUFACTURING DETAIL SEE ASSEMBLY DRAWING 35EN24-4 FOR FAA-PMA

SPECIFICATION DETAILS:		CONFORMS TO MS21320-8 (MIL-PRF-8805/48), EXCEPT AS NOTED													
CONSTRUCTION:															
ENCLOSURE DESIGN		RESILIENT SEAL PER MIL-PRF-8805, SYMBOL 4													
CONTACT MATERIAL & CONFIGURATION		GOLD BIFURCATED CONTACTS													
CIRCUIT CONFIGURATION		2 S.P.D.T.													
TERMINATION		LEADWIRES MIL-W-22759/7													
WEIGHT		11 OZ. MAX													
O-RING MATERIAL		E.P.RUBBER													
ELECTRICAL CHARACTERISTICS:															
ELECTRICAL RATINGS		<table><tr><td>MAX LOAD</td><td>SEA LEVEL</td><td>50,000 FT</td></tr><tr><td>28 VDC</td><td></td><td>28 VDC</td></tr><tr><td>RESISTIVE</td><td>1.0 AMP</td><td>1.0 AMP</td></tr><tr><td>INDUCTIVE</td><td>0.5 AMP</td><td>0.5 AMP</td></tr></table>		MAX LOAD	SEA LEVEL	50,000 FT	28 VDC		28 VDC	RESISTIVE	1.0 AMP	1.0 AMP	INDUCTIVE	0.5 AMP	0.5 AMP
MAX LOAD	SEA LEVEL	50,000 FT													
28 VDC		28 VDC													
RESISTIVE	1.0 AMP	1.0 AMP													
INDUCTIVE	0.5 AMP	0.5 AMP													
-SEA LEVEL															
-50,000 FEET															
DIELECTRIC STRENGTH & INSULATION RES (BASIC SWITCH)		DIELECTRIC STRENGTH INSULATION RESISTANCE (≈ 60 Hz For 5 SECONDS) (500 VDC±10%)													
-BETWEEN TERMINALS AND EXPOSED NON-CURRENT CARRYING METAL		1000 V Rms, 500 μ A (MAX LEAKAGE)000 Megohms MIN													
-BETWEEN TERMINALS OF MUTUALLY INSULATED CIRCUITS		1000 V Rms, 500 μ A (MAX LEAKAGE)000 Megohms MIN													
-BETWEEN ALL UNCONNECTED TERMINALS OF THE SAME POLE		1000 V Rms, 500 μ A (MAX LEAKAGE)000 Megohms MIN													
SWITCH RESISTANCE		2.0 OHMS MAX (MEASURED AT 5.0VDC, 0.1mA) Δ3													
RECOMMENDATION OR USE IN APPL LESS THAN .5 amps AND/OR 12 volts		PREFERRED Δ10													
MECHANICAL CHARACTERISTICS:															
OPERATING TORQUE		12-25 IN-LBS													
RELEASE TORQUE		9 IN-LBS MIN (AS ADJUSTED):4 IN-LBS MIN (AFTER 25K OPS)													
DIFFERENTIAL TRAVEL		SEE LEVER DETAIL													
OVERTRAVEL		SEE LEVER DETAIL													
FULL OVERTRAVEL TORQUE		40 IN-LBS MAX													
FREE POSITION		SEE LEVER DETAIL													
PRETRAVEL		SEE LEVER DETAIL													
MOUNTING STRENGTH		15 IN-LBS													
ACTUATOR STRENGTH		10 LBS APPLIED IN A DIRECTION TO CAUSE SWITCH TO ACTUATE													
LIFE:															
MECHANICAL LIFE		25,000 MIN PER MIL-PRF-8805/48 Δ14													
ELECTRICAL LIFE AT FULL RATED LOAD		25,000 MIN PER MIL-PRF-8805/48 Δ14													
ENVIRONMENTAL:															
TEMPERATURE RANGE		-55° C TO +85° C													
ALTITUDE RANGE		SEA LEVEL TO 50,000 FT													
SHOCK		PER MIL-PRF-8805 SYMBOL M-100g													
VIBRATION		PER MIL-PRF-8805 SYMBOL I -10-500 Hz & 10g PEAK													
MOISTURE RESISTANCE		PER MIL-PRF-8805 (10 DAY TEST)													
THERMAL SHOCK		PER MIL-PRF-8805 (5 CYCLE TEST)													
SALT SPRAY		PER MIL-PRF-8805 (96 HOUR TEST)													



DESIGN UNITS: INCH				DRAWN	JAP	29APR80	<div>Honeywell</div>					
TOLERANCES UNLESS NOTED:				CHECK	DJW	01MAY80						
NO PLACES X ± 0.040				THIS DRAWING COVERS A PROPRIETARY ITEM AND IS THE PROPERTY OF HONEYWELL. THIS DRAWING IS NOT TO BE COPIED OR USED WITHOUT THE PERMISSION OF HONEYWELL.			TITLE SWITCH - ENCLOSED					
ONE PLACE .X ± 0.030												
TWO PLACE .XX ± 0.015												
THREE PLACE .XXX ± 0.005												
FOUR PLACE .XXXX ± 0.0005				INTERPRET PER ASME Y14.5M-1994 OTHER HONEYWELL ENGINEERING STANDARDS MAY APPLY			SIZE	TYPE	CAGE CODE	DRAWING NAME		REV
ANGLES X ± 2°							C	I	91929	35EN24-4		12
THIRD ANGLE PROJECTION				RASTER			SCALE - NONE				SHEET	OF
