



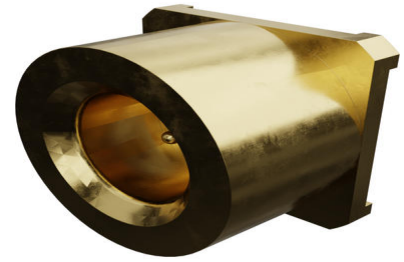
Part Number : [734155590](#)

Product Description : SMP Plug, Modified, Straight, Smooth Bore, PCB, Surface Mount, Tray, 50 Ohms

Series Number : 73300

Status : Active

Product Category : RF / Coaxial Connectors



Documents and Resources

Drawings

[734155590_sd.pdf](#)

3D Models and Design Files


[STEP AP242](#)

[SOLIDWORKS](#)

[Creo](#)

Product Environment Compliance

Compliance

GADSL/IMDS	Not Relevant
China RoHS	 per SJ/T 11365-2006
EU ELV	Not Relevant
Low-Halogen Status	Low-Halogen per IEC 61249-2-21
REACH SVHC	Contains Lead per ECHA_01_2020 (16 January 2020)
EU RoHS	Compliant with Exemption 6(c) per EU 2015/863

Compliance Statements

- EU RoHS
- REACH SVHC
- Low-Halogen

Industry Documents

- IPC 1752A Class C
- IPC 1752A Class D

- Molex Product Compliance Declaration
- IEC-62474
- chemSHERPA (xml)

Substances of Interest

- PFAS

EU RoHS Certificate of Compliance

Additional Product Compliance Information

Part Details

General

Status	Active
Category	RF / Coaxial Connectors
Series	73300
Description	SMP Plug, Modified, Straight, Smooth Bore, PCB, Surface Mount, Tray, 50 Ohms
Application	RF
Product Name	SMP
Style	PCB
Type	Microminiature
UPC	822350295208

Electrical

Frequency	40 GHz
Impedance	50Ω
Power / Voltage	VOLTAGE: 335 Vrms@Sea Level

Physical

Cable Attachment	N/A
Gender	Plug
Keying to Mating Part	N/A
Net Weight	0.882/g
Orientation	Straight
Packaging Type	Tray
Panel Mount	No
Panel Mount Method	N/A

PCB Mounting	Surface Mount
PCB Thickness - Recommended	N/A
Reverse Polar	No
Wire/Cable Type	N/A

This document was generated on May 25, 2026