

THE INFORMATION CONTAINED HEREIN IS CONSIDERED  
"PROPRIETARY" TO BEL FUSE INC. AND SHALL NOT BE  
COPIED, REPRODUCED OR DISCLOSED WITHOUT THE  
WRITTEN APPROVAL OF BEL FUSE INC.

RoHS  
2002/95/EC



ELECTRICAL CHARACTERISTICS @ 25°C

URNS RATIO

TP1	1CT : 1CT ±2%
TP2	1CT : 1CT ±2%
TP3	1CT : 1CT ±2%
TP4	1CT : 1CT ±2%

CL @ 100kHz/100mVRMS  
8mA DC BIAS

350µH MIN.

INS. LOSS

0.1MHz TO 1MHz	-1.1 dB MAX
1MHz TO 65MHz	-0.5 dB MAX
65MHz TO 100MHz	-0.8 dB MAX
100MHz TO 125MHz	-1.2 dB MAX

RET. LOSS (MIN)

0.5MHz-40MHz	-18 dB
40MHz-100MHz	-12+20LOG(f/80MHz) dB

CM TO CM REJ

100kHz - 100MHz	-30 dB MIN
-----------------	------------

CM TO DM REJ

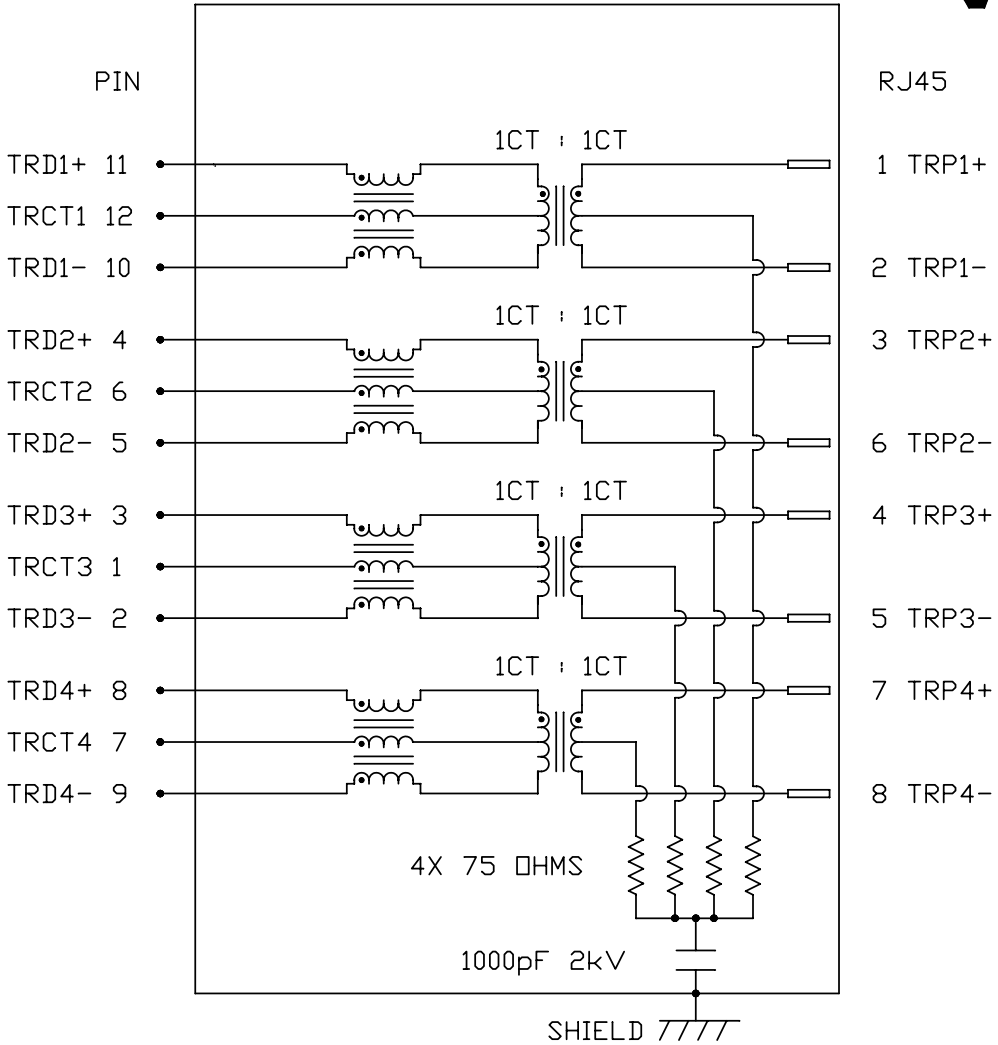
100kHz - 100MHz	-35 dB MIN
-----------------	------------

HIPOT (Isolation Voltage): 1500 Vrms

100% OF PRODUCTION TESTED TO COMPLY  
WITH IEEE 802.3 ISOLATION REQUIREMENTS.

OPERATING TEMPERATURE: -40 TO +85°C

SCHEMATIC



ORIGINATED BY	DATE
CHOW WANGCHUNG	12-09-10
DRAWN BY	DATE
LEE WEIDE	12-09-10

TITLE
gigabit MagJack® (Extended Temperature and 50µinch gold plating ) L8AL-1X1T-32A PATENTED

PART NO. / DRAWING NO.
L8AL-1X1T32A
FILE NAME
L8AL-1X1T32A_A.DWG

STANDARD DIM.
TOL. IN INCH
.X
.XX
.XXX

[ ] METRIC DIM. AS REFERENCE
UNIT : INCH [mm]
SCALE : N/A
REV. : A
SIZE : A4
PAGE : 2



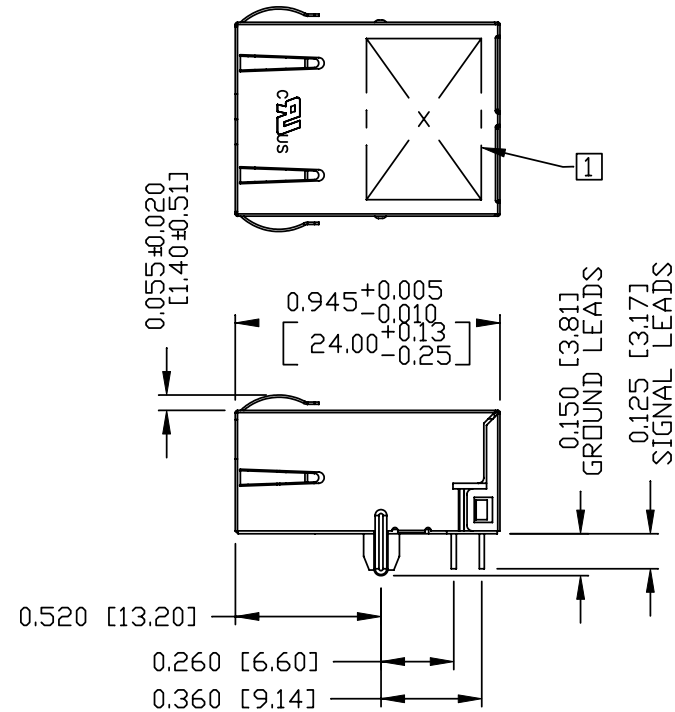
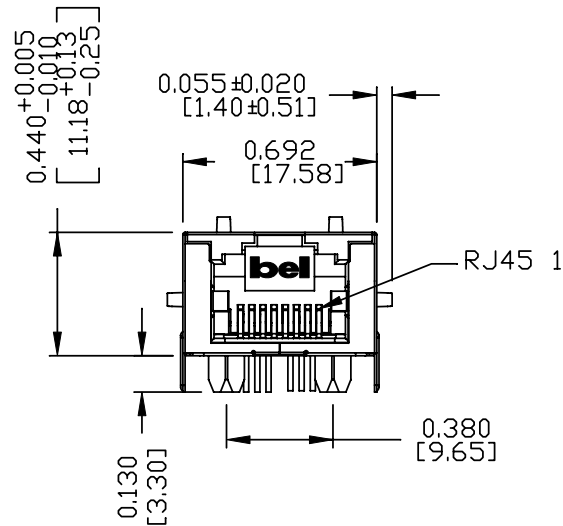
THE INFORMATION CONTAINED HEREIN IS CONSIDERED "PROPRIETARY" TO BEL FUSE INC. AND SHALL NOT BE COPIED, REPRODUCED OR DISCLOSED WITHOUT THE WRITTEN APPROVAL OF BEL FUSE INC.

## MECHANICAL SPECIFICATION

RoHS  
2002/95/EC



Additional Resources: [Product Page](#) [PCB Footprint](#) [Technical Documentation](#)



### NOTES:

PLASTIC HOUSING: THERMOPLASTIC PA  
FLAMMABILITY RATING UL 94V-0  
CONTACTS: 50 MICRO-INCH HARD GOLD PLATING  
OUTPUT PINS: TIN-COATED COPPER WIRE, DIA 0.018 INCH.  
METAL SHIELD: NICKEL PLATED ON COPPER ALLOY.  
(ALL GROUND LEADS ARE SOLDER DIPPED)

1. MARK PART WITH MFG. LOGO, MFG. NAME, PART NUMBER L8AL-1X1T-32A AND DATE CODE AND PATENTED.

2. RoHS COMPLIANCE, PER EU DIRECTIVE 2002/95/EC.

3. RoHS COMPLIANCE, PER EU DIRECTIVE 2002/95/EC.

3. JACK CAVITY CONFORMS TO FCC RULES AND REGULATIONS.

4. THE PRODUCT IS PATENTED, THE PATENT NUMBER ARE U.S. PAT. 5,736,910 AND U.S. PAT. 6,840,817 AND U.S. PAT. 7,123,117.

ORIGINATED BY	DATE	TITLE	PART NO. / DRAWING NO.	STANDARD DIM. TOL. IN INCH	[ ] METRIC DIM. AS REFERENCE	
CHEN BILL	12-09-10	gigabit MagJack® (Extended Temperature and 50uinch gold plating )	L8AL-1X1T32A	.X	UNIT : INCH [mm]	REV. : A
DRAWN BY	DATE	L8AL-1X1T-32A PATENTED	FILE NAME	.XX	SCALE : N/A	SIZE : A4
XIAN JIAXIN	12-09-10		L8AL-1X1T32A_A.DWG	.XXX ±0.010		PAGE : 3

**bel**  
COMPONENTS FOR A  
CONNECTED  
PLANET

DC002(2)051509

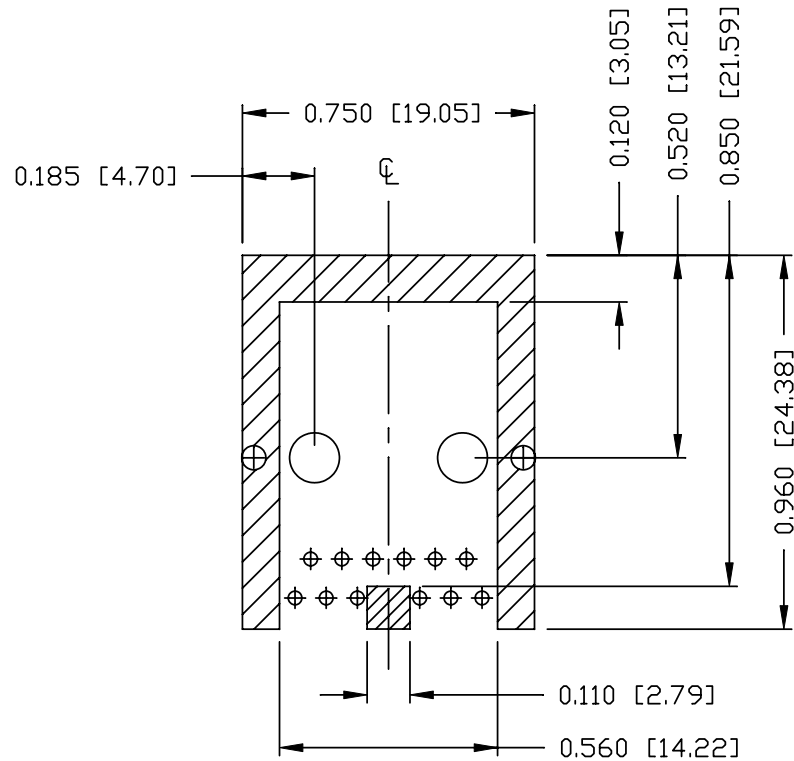
This document is electronically generated. This is a controlled copy if used internally

THE INFORMATION CONTAINED HEREIN IS CONSIDERED 'PROPRIETARY' TO BEL FUSE INC. AND SHALL NOT BE COPIED, REPRODUCED OR DISCLOSED WITHOUT THE WRITTEN APPROVAL OF BEL FUSE INC.

RoHS  
2002/95/EC

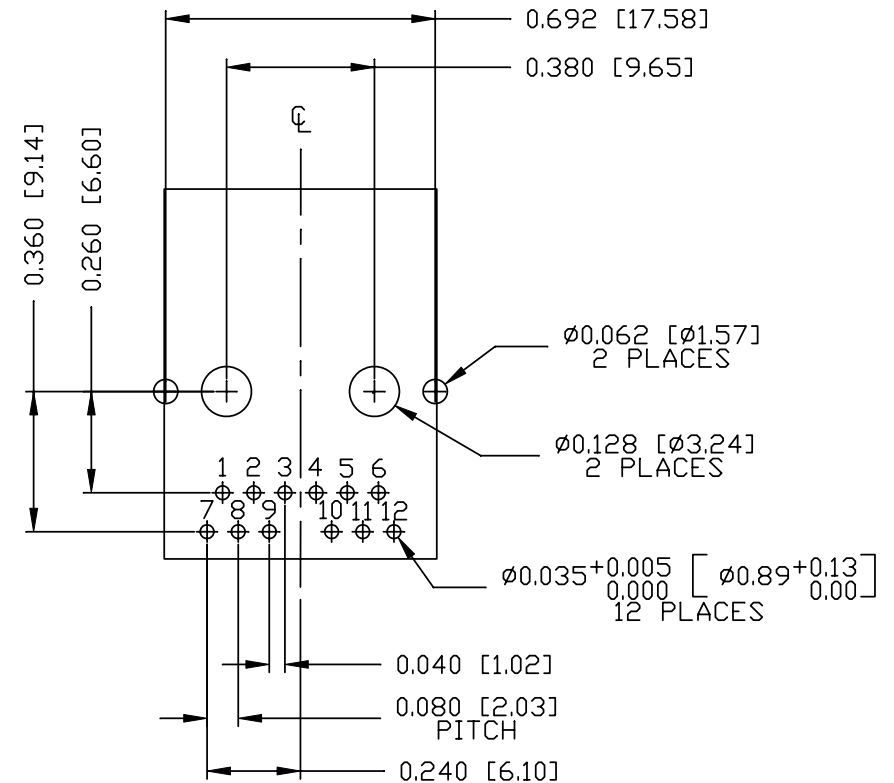




RECOMMENDED PCB FOOTPRINT  
COMPONENT SIDE VIEW



NOTES:

THE SHADED AREA ON THE CUSTOMER BOARD ARE RECOMMENDED TO BE CLEAR OFF ANY VIA HOLE OR COMPONENT PAD.



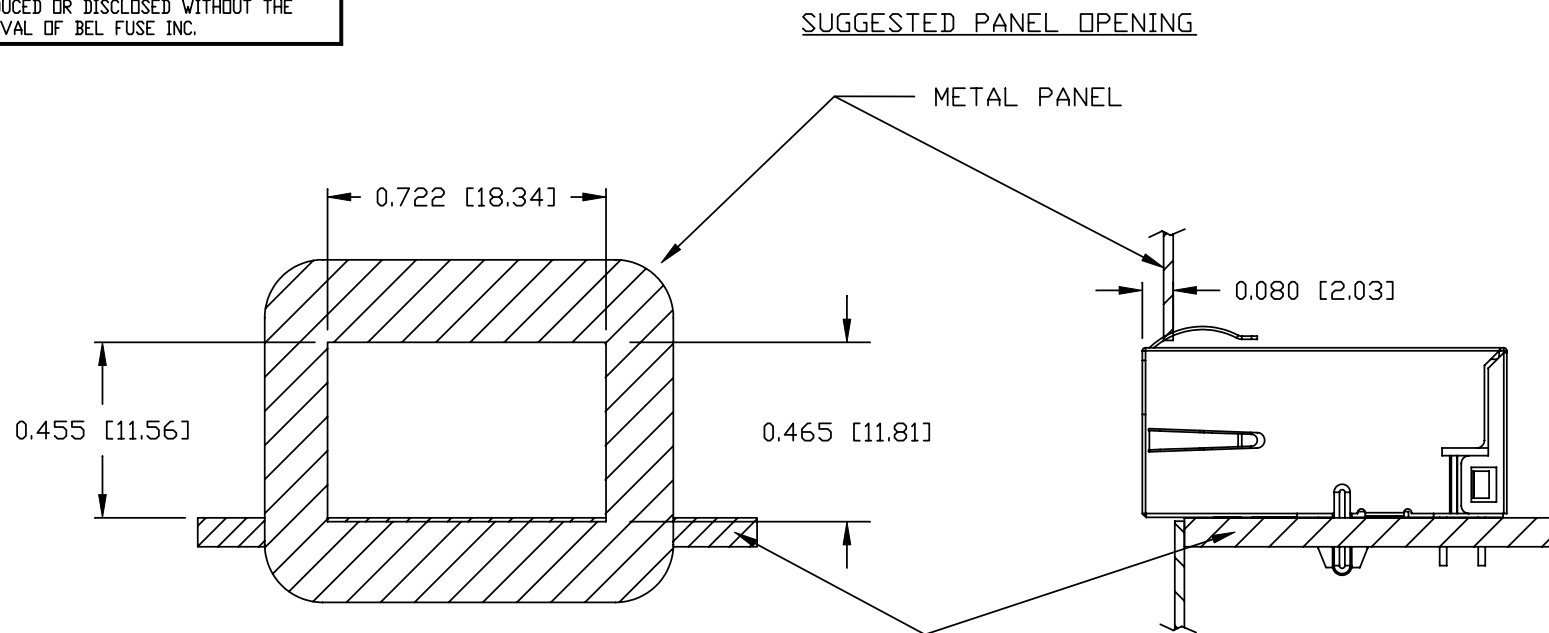
ORIGINATED BY	DATE	TITLE gigabit MagJack® (Extended Temperature and 50uinch gold plating ) L8AL-1X1T-32A PATENTED	PART NO. / DRAWING NO.	STANDARD DIM.		[ ] METRIC DIM. AS REFERENCE		 COMPONENTS FOR A CONNECTED PLANET
CHEN BILL	12-09-10		L8AL-1X1T32A	TOL. IN INCH		UNIT : INCH [mm] REV. : A		
DRAWN BY	DATE		FILE NAME	.X		SCALE : N/A	SIZE : A4	
XIAN JIAXIN	12-09-10		L8AL-1X1T32A_A.DWG	.XX			PAGE : 4	
				.XXX	±0.004			

DC002(2)051509

This document is electronically generated. This is a controlled copy if used internally

THE INFORMATION CONTAINED HEREIN IS CONSIDERED "PROPRIETARY" TO BEL FUSE INC. AND SHALL NOT BE COPIED, REPRODUCED OR DISCLOSED WITHOUT THE WRITTEN APPROVAL OF BEL FUSE INC.

RoHS  
2002/95/EC



NOTE:

THE DISTANCE OF PANEL INSIDE SURFACE RELATIVE TO FRONT SURFACE OF PART IS ONLY A SUGGESTION. IN CASE THIS DISTANCE IS DIFFERENT, THE REQUIRED PANEL OPENING DIMENSIONS CHANGE ACCORDINGLY.

TRAY PACKING INFORMATION

PACKING TRAY : 0200-9999-E4 (TOP)

0200-9999-E5 (BOTTOM)

PACKING QUANTITY : 60 PCS FINISHED GOODS PER TRAY

11 TRAYS (660 PCS FINISHED GOODS) PER CARTON BOX

NOTE : CARDBOARDS ARE PLACED BETWEEN LAYERS OF PACKING TRAY INSIDE CARTON BOX  
(INCLUDE THE UPPERMOST AND LOWERMOST TRAY)

ORIGINATED BY	DATE	TITLE	PART NO. / DRAWING NO.	STANDARD DIM.	[ ] METRIC DIM. AS REFERENCE	
CHEN BILL	12-09-10	gigabit MagJack® (Extended Temperature and 50uinch gold plating ) L8AL-1X1T-32A PATENTED	L8AL-1X1T32A	TOL. IN INCH	UNIT : INCH [mm]	REV. : A
DRAWN BY	DATE		FILE NAME	.X	SCALE : N/A	SIZE : A4
XIAN JIAXIN	12-09-10		L8AL-1X1T32A_A.DWG	.XX		PAGE : 5
				.XXX		



DC002(2)051509

This document is electronically generated. This is a controlled copy if used internally