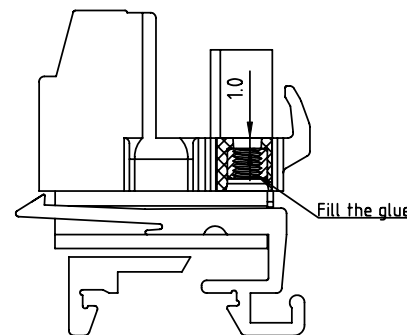
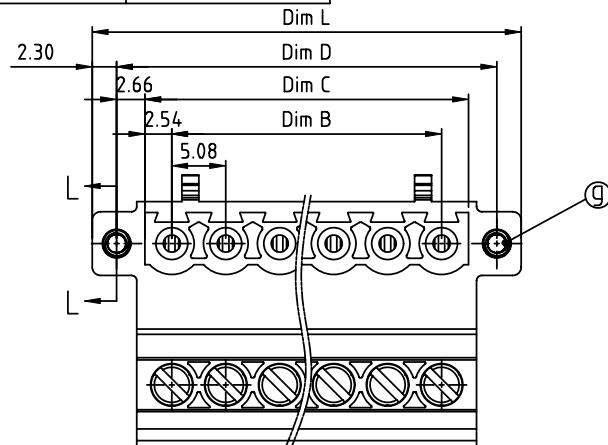
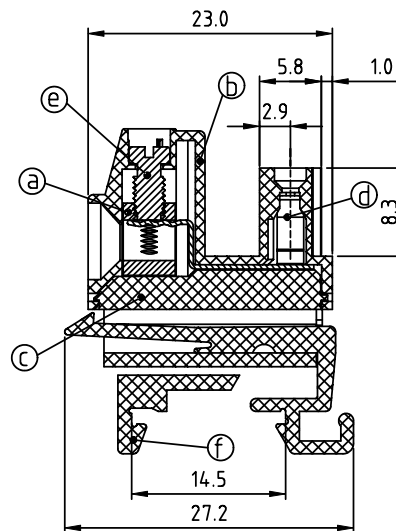
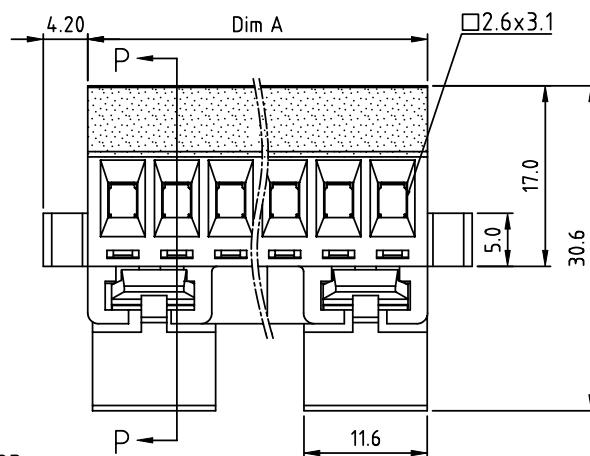


PRODUCT NUMBER	PITCH
V9xx51x300J0G	5.08 mm



SECTION L-L



SECTION P-P

Dimension

Dim L	$(N-1) \times 5.08 + 15.0$
Dim A	$(N-1) \times 5.08 + 6.6$
Dim B	$(N-1) \times 5.08$
Dim C	$N \times 5.08$
Dim D	$(N-1) \times 5.08 + 10.4$

N=Number of poles

Poles	Tolerance
2P - 6P	±0.15
7P - 12P	±0.20
13P - 18P	±0.30
19P - 24P	±0.40

PART NO.: V9 xx 51 x 3 00J0 G

Solid block	No. of poles	Color	RoHS compliant (lead<4%) In copper Alloy
02	2 poles	Black (RAL9005)	
03	3 poles	Red (RAL3001/D)	
...	...	Orange (RAL2011/P)	
24	24 poles	Yellow (RAL1018/A)	
		Green (RAL6018/T)	
		Blue (RAL5015/A)	
		Grey (RAL7035/D)	
		White (RAL1102)	
		C Green (RAL6018/U)	

Material:

- Item ① Clamp: Brass Ni plated
- Item ② Terminal (housing): Thermoplastic (UL94V-0)
- Item ③ Terminal (Cover): Thermoplastic (UL94V-0)
- Item ④ Male contact: PhBz, Tin plated.
- Item ⑤ Terminal screw: Steel Zinc plating " - " slot type
- Item ⑥ Terminal (track): Thermoplastic (UL94V-0)
- Item ⑦ With flange nut: Brass M2.5

Electrical: cULus

- Voltage rating: 300V
- Current rating: 12A
- Wire range:
 - Solid wire (AWG): 12-30
 - Stranded wire (AWG): 12-30
- Torque: 5.2Lb-In.
- Screw: M3
- Wire strip length: 6-7 mm
- Withstanding Voltage: 1.6KV
- Operating temperature: -40°C to +115°C
- Safety Approval: cULus

mat'l. code				surface ASME Y14.5 ✓	tolerance ASME Y14.5	projection MM	product family	
ltr	ecn	no	dr	date	tolerances unless otherwise specified		TERMINAL BLOCK	
					angles	X.±0.5	title TERMINAL BLOCK PLUGGABLE PLUG, WITH FLANGE DINRAIL MOUNTING, A TYPE	
					X°±1°	X.XX±0.1		
					dr	EVIN ZHONG 050414	dwg no V9xx51x300J0G	
					enr	EVIN ZHONG 050414		
					chr	HANKE FENG 050414	sheet 1 of 1 size A4	
					appd	SHI JUN 050414		
sheet index	revision	A					type CUSTOMER Drawing	