



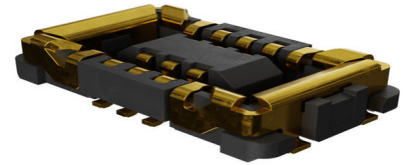
Part Number : [5054130610](#)

Product Description : SlimStack Board-to-Board Receptacle, 0.35mm Pitch, SSB RP Series, 0.90 or 1.00mm Mated Height, 2.00mm Mated Width, 6 Circuits

Series Number : 505413

Status : Active

Product Category : Board-to-Board Connectors



Documents and Resources

Drawings

[5054130610 sd.pdf](#)

3D Models and Design Files

[STEP AP242](#)

[SOLIDWORKS](#)

[Creo](#)

[Symbol and Footprint \(Multi-Format\)](#)

Specifications

[5054139200-200.pdf](#)

[5054130000-001.pdf](#)


[5054130000-004.pdf](#)

[5054130000-005.pdf](#)

[5054130000-A00.pdf](#)

Product Environment Compliance

Compliance

GADSL/IMDS	Compliant with Exemption 44; 33; 34
China RoHS	 per SJ/T 11365-2006
EU ELV	Not Relevant
Low-Halogen Status	Low-Halogen per IEC 61249-2-21
REACH SVHC	Not Contained per D(2025)7771-

	DC (04 Feb 2026)
EU RoHS	Compliant per EU 2015/863

Compliance Statements

- EU RoHS
- REACH SVHC
- Low-Halogen

Industry Documents

- IPC 1752A Class C
- IPC 1752A Class D
- Molex Product Compliance Declaration
- IEC-62474
- chemSHERPA (xml)

Substances of Interest

- PFAS

EU RoHS Certificate of Compliance

Additional Product Compliance Information

Part Details

General

Status	Active
Category	Board-to-Board Connectors
Series	0.35, SSB RP
Description	SlimStack Board-to-Board Receptacle, 0.35mm Pitch, SSB RP Series, 0.90 or 1.00mm Mated Height, 2.00mm Mated Width, 6 Circuits
Application	Board-to-Board
Component Type	Receptacle
Product Name	SlimStack
UPC	191128242608

Electrical

Current - Maximum per Contact	0.3A, 3.0A
Voltage - Maximum	50V AC (RMS)/DC

Physical

Breakaway	No
Circuits (Loaded)	6
Circuits (maximum)	6
Color - Resin	Black
Durability (mating cycles max)	30
Glow-Wire Capable	No
Mated Height	0.90mm, 1.00mm
Mated Width	2.00mm
Material - Metal	Copper Alloy
Material - Plating Mating	Gold
Material - Plating Termination	Gold
Material - Resin	Liquid Crystal Polymer (LCP)
Net Weight	9.060/mg
Number of Rows	2
Orientation	Vertical
Packaging Type	Embossed Tape on Reel
PCB Locator	No
PCB Retention	Yes
Pitch - Mating Interface	0.35mm
Pitch - Termination Interface	0.35mm
Plating min - Mating	0.100µm
Plating min - Termination	0.050µm
Polarized to Mating Part	No
Polarized to PCB	No
Temperature Range - Operating	-40° to +85°C
Termination Interface Style	Surface Mount

Mates With / Use With

Mates with Part(s)

Description	Part Number
SlimStack Board-to-Board Plug, 0.35mm Pitch, SSB RP Series, 0.80 or 0.90mm Mated Height, 2.00mm Mated Width, 6 Circuits, Armor Nail, 0.15mm Fitting Nail	<u>5052740612</u>

Width	
SlimStack Board-to-Board Plug, 0.35mm Pitch, SSB RP Series, 0.80 or 0.90mm Mated Height, 2.00mm Mated Width, 6 Circuits, Armor Nail, 0.25mm Fitting Nail Width	<u>5052740642</u>
SlimStack Board-to-Board Plug, 0.35mm Pitch, SSB RP Series, 1.00mm Mated Height, 2.00mm Mated Width, 6 Circuits	<u>5054170610</u>

This document was generated on Apr 23, 2026