

**Part Number :** [03061122](#)

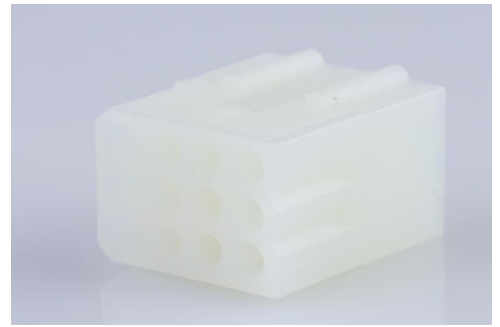
**Product Description :** 1.57mm Diameter Standard .062" Pin and Socket Receptacle Housing, 12 Circuits, without Mounting Ears, Natural

**Series Number :** 1625

**Status :** Active

**Product Category :** Connector Housings

**Engineering Part Number :** 1625-12R1



---

## Documents and Resources

### Drawings

[003061122 sd.pdf](#)

### 3D Models and Design Files

[STEP AP242](#)

[SOLIDWORKS](#)

[Creo](#)

### Specifications

[PK-1625-003-001.pdf](#)

[PS-02-06-001.pdf](#)

---

## Product Environment Compliance

### Compliance

GADSL/IMDS	Not Relevant
China RoHS	 per SJ/T 11365-2006
EU ELV	Not Relevant
Low-Halogen Status	Low-Halogen per IEC 61249-2-21
REACH SVHC	Not Contained per D(2025)7771-DC (04 Feb 2026)
EU RoHS	Compliant per EU 2015/863

### [Compliance Statements](#)

- EU RoHS

- REACH SVHC
- Low-Halogen

#### Industry Documents

- IPC 1752A Class C
- IPC 1752A Class D
- Molex Product Compliance Declaration
- IEC-62474
- chemSHERPA (xml)

#### Substances of Interest

- PFAS

#### EU RoHS Certificate of Compliance

#### Additional Product Compliance Information

## Part Details

### General

Status	Active
Category	Connector Housings
Series	1625
Description	1.57mm Diameter Standard .062" Pin and Socket Receptacle Housing, 12 Circuits, without Mounting Ears, Natural
Application	Power, Wire-to-Wire
Comments	Polarized to Mating Part
Product Name	Standard .062"
UPC	800754231213

### Agency

CSA	LR19980
UL	E29179

### Physical

Circuits Detail	3x4
Circuits (maximum)	12
Color - Resin	Natural
Flammability	94V-2
Gender	Receptacle

Glow-Wire Capable	No
Keying to Mating Part	No
Lock to Mating Part	Yes
Material - Resin	Nylon
Net Weight	2.737/g
Number of Rows	3
Packaging Type	Bag
Panel Mount	No
Pitch - Mating Interface	3.68mm
Pitch - Termination Interface	3.68mm
Polarized to Mating Part	Yes
Stackable	No
Temperature Range - Operating	-40° to +105°C

### Solder Process Data

Lead-Free Process Capability	N/A
------------------------------	-----

---

### Mates With / Use With

#### Mates with Part(s)

Description	Part Number
1.57mm Diameter Standard .062" Pin and Socket Plug Housing, 12 Circuits, with Pre-bent Mounting Ears, Natural	<a href="#"><u>03062121</u></a>
1.57mm Diameter Standard .062" Pin and Socket Plug Housing, 12 Circuits, without Mounting Ears, Natural	<a href="#"><u>03062122</u></a>

#### Use with Part(s)

Description	Part Number
Standard .062" Pin and Socket Female Crimp Terminals	<a href="#"><u>1561</u></a>
Standard .062" Pin and Socket Female Crimp Terminals	<a href="#"><u>1855</u></a>
Standard .062" Pin and Socket	<a href="#"><u>1560</u></a>

Male Crimp Terminals	
Standard .062" Pin and Socket Male Crimp Terminals	<u>1854</u>
Standard .062" Pin and Socket Male PC Tail Terminals	<u>1778</u>
Standard .062" Pin and Socket Female PC Tail Terminals	<u>1779</u>

---

This document was generated on Jun 01, 2026